

MARK 6 and MARK 6A PARTS LIST

SERIAL NUMBERS:

Mark 6	888005 thru 892530
Mark 6-1	892531 thru 901584
Mark 6-2	901627 thru 1051992
Mark 6-3	1051993 thru 1128535
Mark 6-4	1128536 thru 1134535
Mark 6A	1184570 and up

AR = As Required

INDEX:

	<u>Page</u>
Bottom Cowl and Fuel Pump Assembly	10
Carburetor Assembly.	6
Choke Assembly	6
Clamp and Swivel Bracket Assembly	12
Crankcase and Bearing Housing Assembly	9
Crankshaft and Center Main Bearing	8
Cylinder Block Assembly	7
Drive Shaft Housing.	13
Gear Housing Assembly	14
Magneto Assembly (Phelon)	4
Magneto Assembly (Scintilla)	5
Piston and Connecting Rod Assembly	8
Fuel Tank Assembly	(See Note Below)
Starter Assembly	3
Steering Handle Assembly	11
Top Cowl Assembly (MK6, MK6-1, MK6-2, MK6-3 and MK6-4).	1
Top Cowl Assembly (MK6A).	2

NOTE: For reference to Fuel Tank Assembly (1203-335A4) not shown in this parts list, please refer to Section "D" in your Accessory Parts List.

Gasket Set (motor overhaul).	27-23278
Decal Set (MK6 and MK6-1).	37-25097
Decal Set (MK6-2, MK6-3, MK6-4 and MK6A).	37-28736
Decal Set (white motors - MK6A)	37-28803
Decal Solution (pint bottle)	92-25143
Flushing Assembly.	23597A1
Shipping Carton (fuel tank)	25037
Gasket and Packing Set (Carburetor).	1399-961
Repair Parts Kit (Carburetor).	1399-810
Mark 6 and Mark 6A Parts List, Complete	90-32034

PRINTED IN U. S. A.

REVISED JULY 1961

TOP COWL ASSEMBLY

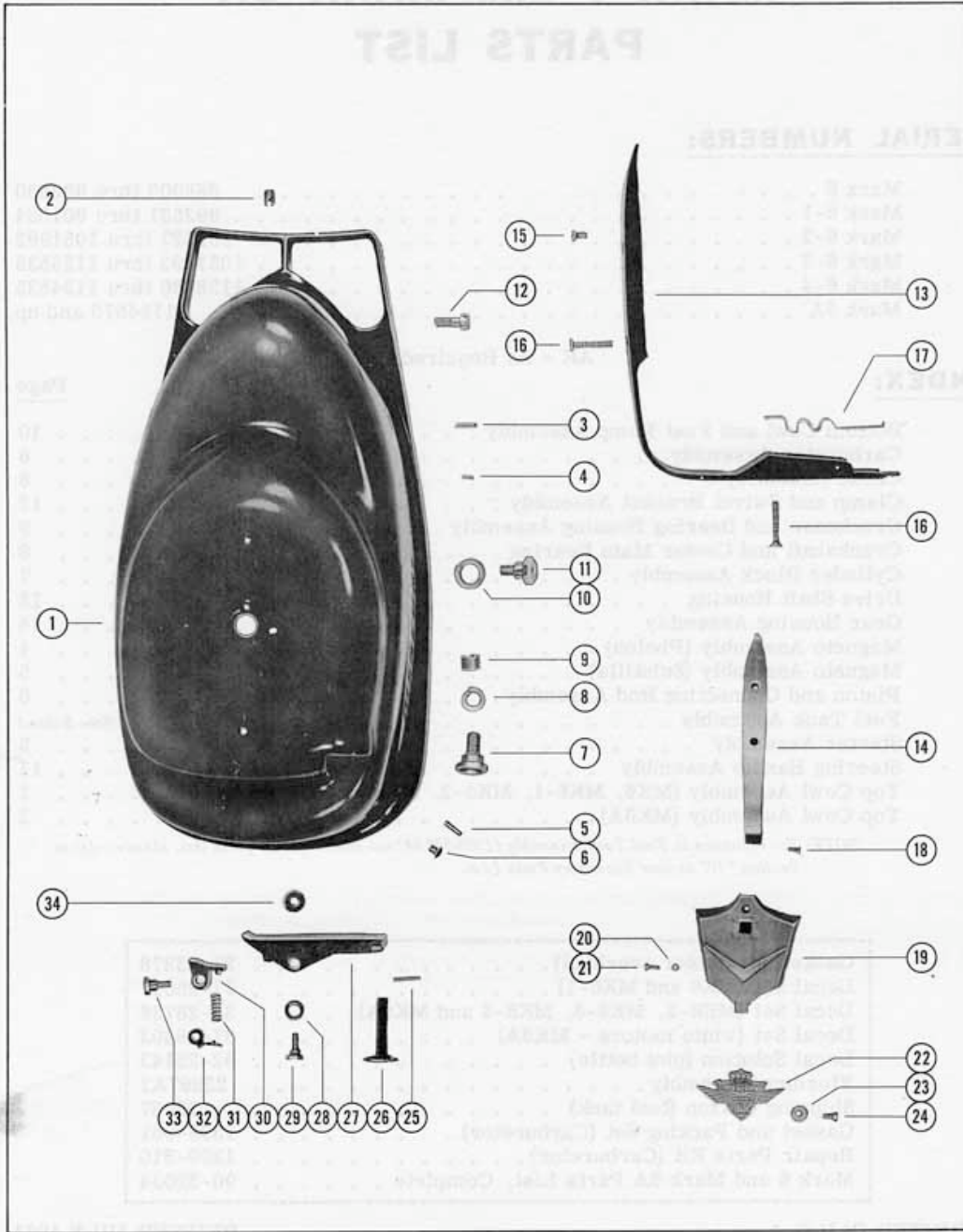
PART NO.	REF. NO.	DESCRIPTION	MK6	MK6 -1	MK6 -2	MK6 -3	MK6 -4
119-888A3	1	Top Cowl Assembly	1	1	-	-	-
119-1046A3	1	Top Cowl Assembly	-	-	1	1	1
21041	2	Insert, tap lock	1	1	1	1	1
17-22078	3	Pin, anchor - starter spring	1	1	1	1	1
17-20563	4	Pin, roll - sheave shaft retaining	1	1	1	1	1
17-24814	5	Pin, roll - locating	2	2	2	2	2
20721	6	Bumper, rubber - top cowl	2	2	2	2	2
23318	7	Guide, starter cable	1	1	1	1	1
13-20758	8	Lockwasher, cable guide	1	1	1	1	1
11-23320	9	Nut, cable guide to top cowl	1	1	1	1	1
13-22021	10	Lockwasher, sheave shaft to top cowl screw	1	1	1	1	1
10-23530	11	Screw, sheave shaft to top cowl	1	1	1	1	1
10-24852	12	Screw, top cowl to bottom cowl	1	1	1	1	1
23927	13	Handle, top cowl	1	1	-	-	-
25498	14	Handle, top cowl	-	-	1	1	1
10-24942	15	Screw, handle to top cowl (7/16")	1	1	-	-	-
10-25501	15	Screw, handle to top cowl (1/2")	-	-	1	1	1
10-24828	16	Screw, handle to top cowl (1 1/4")	2	2	1	1	1
24924	17	Catch, draw bolt	1	1	1	1	1
10-21424	18	Screw, handle to shield (1/2")	-	-	1	-	-
10-26537	18	Screw, handle to shield (1/2")	-	-	-	1	1
25497A1	--	Shield Assembly, front cowl	-	-	-	1	1
25497	19	Shield, front cowl	-	-	1	1	1
26183A	--	Emblem, front cowl shield (see note below)	-	-	-	1	1
13-26996	20	Lockwasher, shield and draw bolt catch to top cowl	-	-	3	3	3
10-20665	21	Screw, shield and draw bolt catch to top cowl	-	-	3	3	3
25499	22	Emblem, front shield	-	-	1	-	-
12-20346	23	Washer, emblem to shield screw	-	-	1	-	-
10-21562	24	Screw, emblem to shield	-	-	1	-	-
17-24800	25	Pin, forward knob to trip lever	1	1	1	1	1
23917	26	Knob, forward	1	1	1	1	1
22865	27	Lever, trip - neutral	1	1	1	1	1
12-22887	28	Washer, trip lever to top cowl screw (top)	1	1	1	1	1
10-22866	29	Screw, trip lever to top cowl	1	1	1	1	1
22867	30	Detent, neutral	1	1	1	1	1
24-22870	31	Spring, detent	1	1	1	1	1
22869	32	Retainer, detent spring	1	1	1	1	1
10-22868	33	Screw, detent spring to top cowl	1	1	1	1	1
12-22894	34	Washer, trip lever to top cowl screw (bottom)	1	1	1	1	1

NOTE: Emblems for replacement may be ordered in two (2) different color combinations as listed below. Be sure and specify color combination required by adding A1 or A2 suffix to emblem part number 26183:

26183A1 Emblem (black background with red and aluminum lettering)
 26183A2 Emblem (aluminum background with red and gold lettering)
 92-27109 Adhesive Compound (3/4 ounce kit) emblem fastening

TOP COWL ASSEMBLY

PARTS LIST



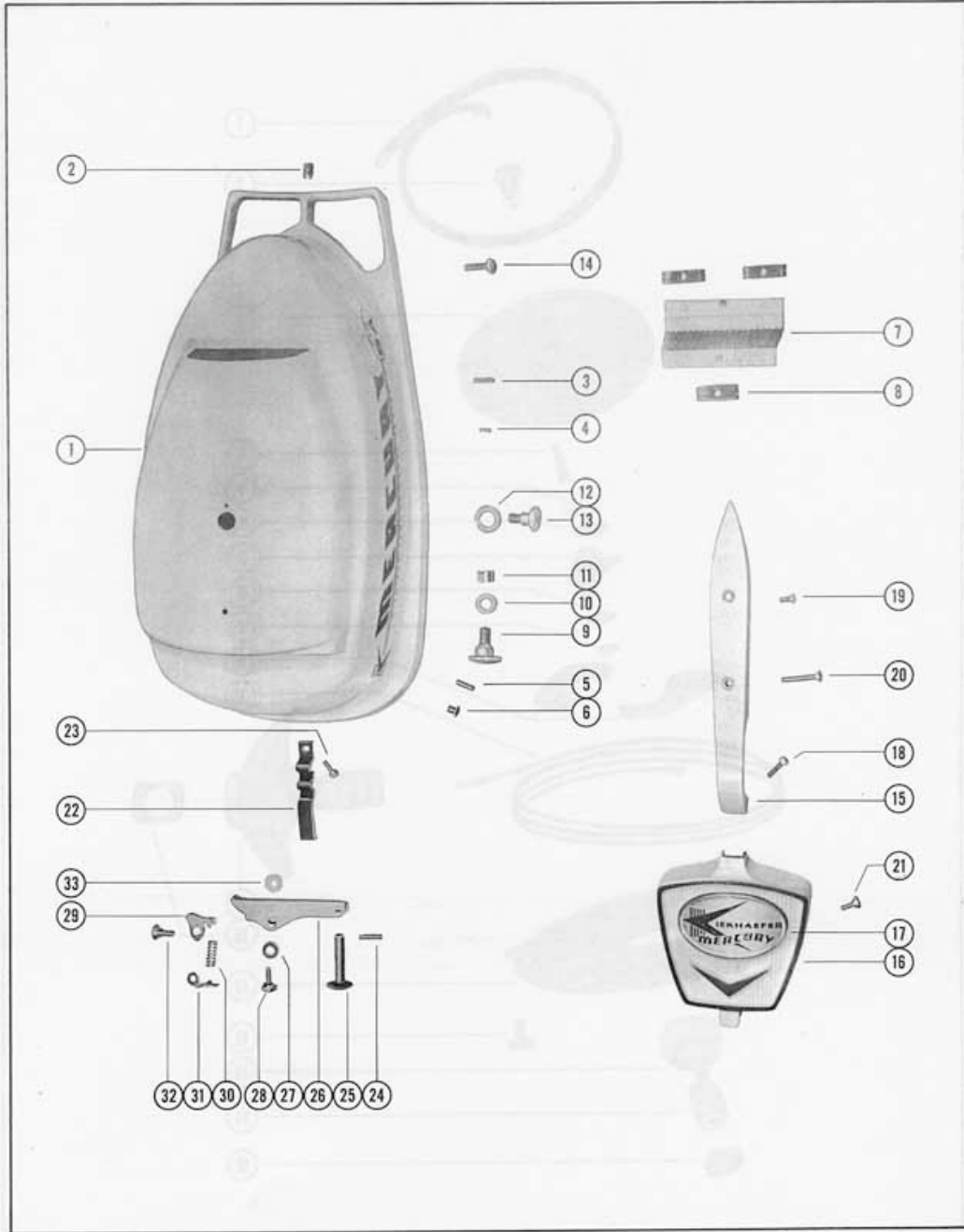
TOP COWL ASSEMBLY

PART NO.	REF. NO.	DESCRIPTION	MK6A
119-1503A3	1	Top Cowl Assembly	1
21041	2	Insert, tap lock	1
17-22078	3	Pin, anchor - starter spring	1
17-20563	4	Pin, roll - sheave shaft retaining	1
17-24814	5	Pin, roll - locating	2
20721	6	Bumper, rubber - top cowl	2
28768	7	Screen, vent - top cowl	1
11-22425	8	Nut, screen to top cowl	3
23318	9	Guide, starter cable	1
13-20758	10	Lockwasher, cable guide	1
11-23320	11	Nut, cable guide to top cowl	1
13-22021	12	Lockwasher, sheave shaft screw	1
10-23530	13	Screw, sheave shaft to top cowl	1
10-24852	14	Screw, top cowl to bottom cowl	1
28769	15	Handle, top cowl	1
28677A1	16	Shield Assembly, front cowl	1
26183A	17	Emblem, front cowl shield (<i>see note below</i>)	1
10-28704	18	Screw, handle to shield (5/8")	1
10-25501	19	Screw, handle to top cowl (1/2")	1
10-24828	20	Screw, handle to top cowl (1 1/4")	1
10-28705	21	Screw, shield to cowl	2
24924	22	Catch, draw bolt	1
10-28705	23	Screw, draw bolt catch to cowl	1
17-24800	24	Pin, forward knob to trip lever	1
23917	25	Knob, forward	1
22865	26	Lever, trip - neutral	1
12-22887	27	Washer, trip lever screw (top)	1
10-22866	28	Screw, trip lever to top cowl	1
22867	29	Detent, neutral	1
24-22870	30	Spring, detent	1
22869	31	Retainer, detent spring	1
10-22868	32	Screw, detent to top cowl	1
12-22894	33	Washer, trip lever screw (bottom)	1

NOTE: Emblems for replacement may be ordered in two (2) different color combinations as listed below. Be sure and specify color combination required by adding A1 or A2 suffix to emblem part number 26183:

- 26183A1 Emblem (black background with red and aluminum lettering)
- 26183A2 Emblem (aluminum background with red and gold lettering)
- 92-27109 Adhesive Compound (3/4 ounce kit) emblem fastening

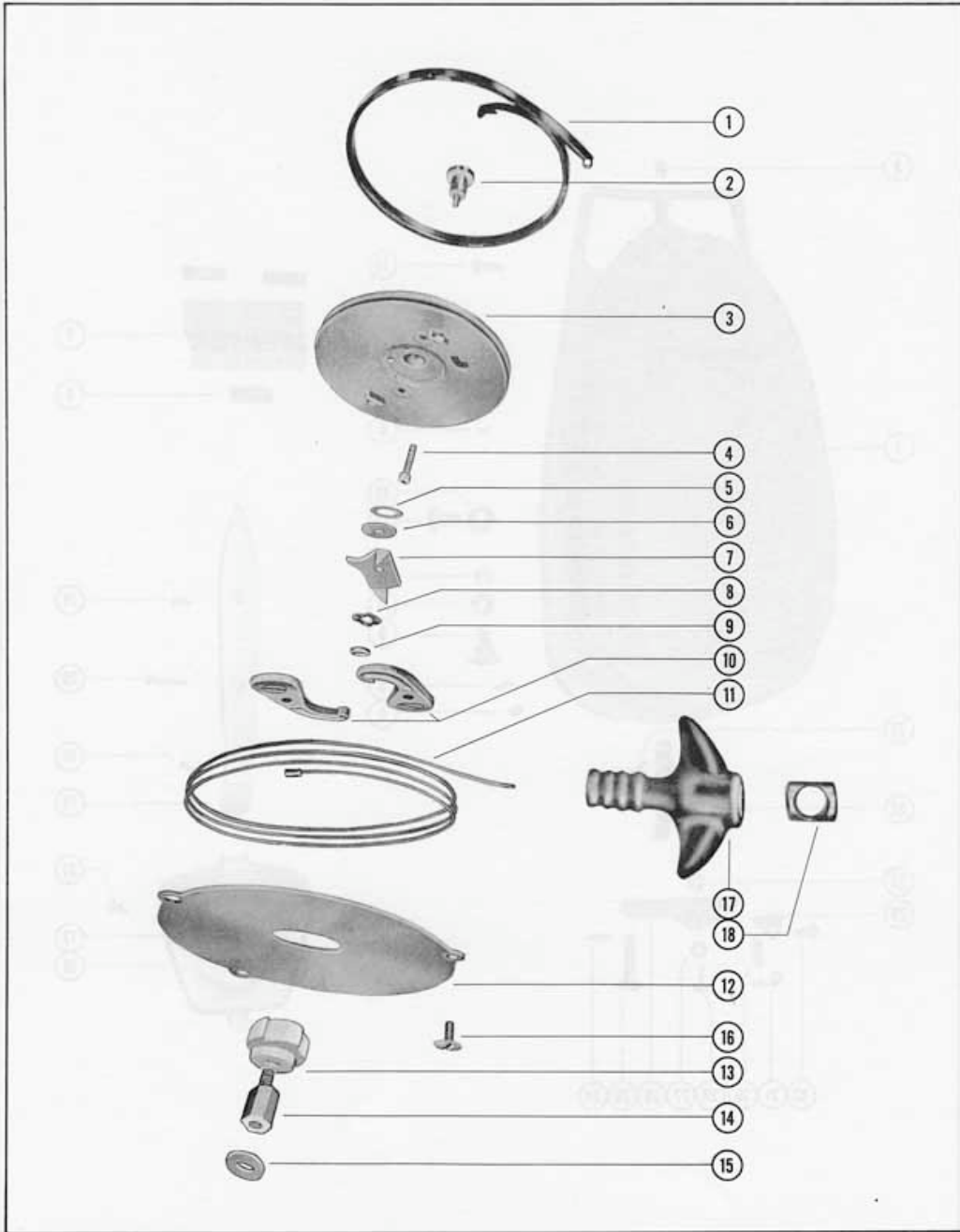
TOP COWL ASSEMBLY



STARTER ASSEMBLY

PART NO.	REF. NO.	DESCRIPTION	MK6	MK6 -1	MK6 -2	MK6 -3	MK6 -4	MK6A
24-24081	1	Spring, starter	1	1	1	1	1	1
24170	2	Shaft, starter sheave	1	1	1	1	1	1
24080A5	3	Starter Sheave Assembly	1	1	1	1	1	1
17-24171	-	Pin, retainer	1	1	1	1	1	1
17-20564	-	Pin, spring anchor	1	1	1	1	1	1
24078	-	Thread Guard	2	2	2	2	2	2
10-24776	4	Screw, sheave reinforcing	2	2	2	2	2	2
15-20767	5	Shim, sheave shaft (.010)	1	1	1	1	1	1
12-24172	6	Washer, sheave shaft	1	1	1	1	1	1
24085	7	Retainer, starter pawl	1	1	1	1	1	1
13-20511	8	Washer, wave	1	1	1	1	1	-
13-28943	8	Washer, wave	-	-	-	-	-	1
24169	9	Collar, sheave shaft	1	1	1	1	1	1
24181A1	10	Starter Pawl Assembly	2	2	2	2	2	2
20793	--	Magnet, starter pawl	2	2	2	2	2	2
22681A1	11	Starter Cable Assembly	1	1	1	1	1	1
24082	12	Plate, friction	1	1	1	1	1	1
22680	13	Ratchet, starter	1	1	1	1	1	1
23-24805	14	Spacer, starter ratchet	1	1	1	1	1	1
12-20959	15	Washer, starter ratchet	AR	-	-	-	-	-
12-22248	15	Washer, starter ratchet	-	AR	AR	AR	AR	-
12-27025	15	Washer, starter ratchet	-	-	-	-	-	1
10-22491	16	Screw, friction plate to top cowl	3	3	3	3	3	3
20662	17	Handle, starter cable	1	1	1	1	1	1
24804	18	End Cap, starter handle	1	1	1	1	1	1

STARTER ASSEMBLY

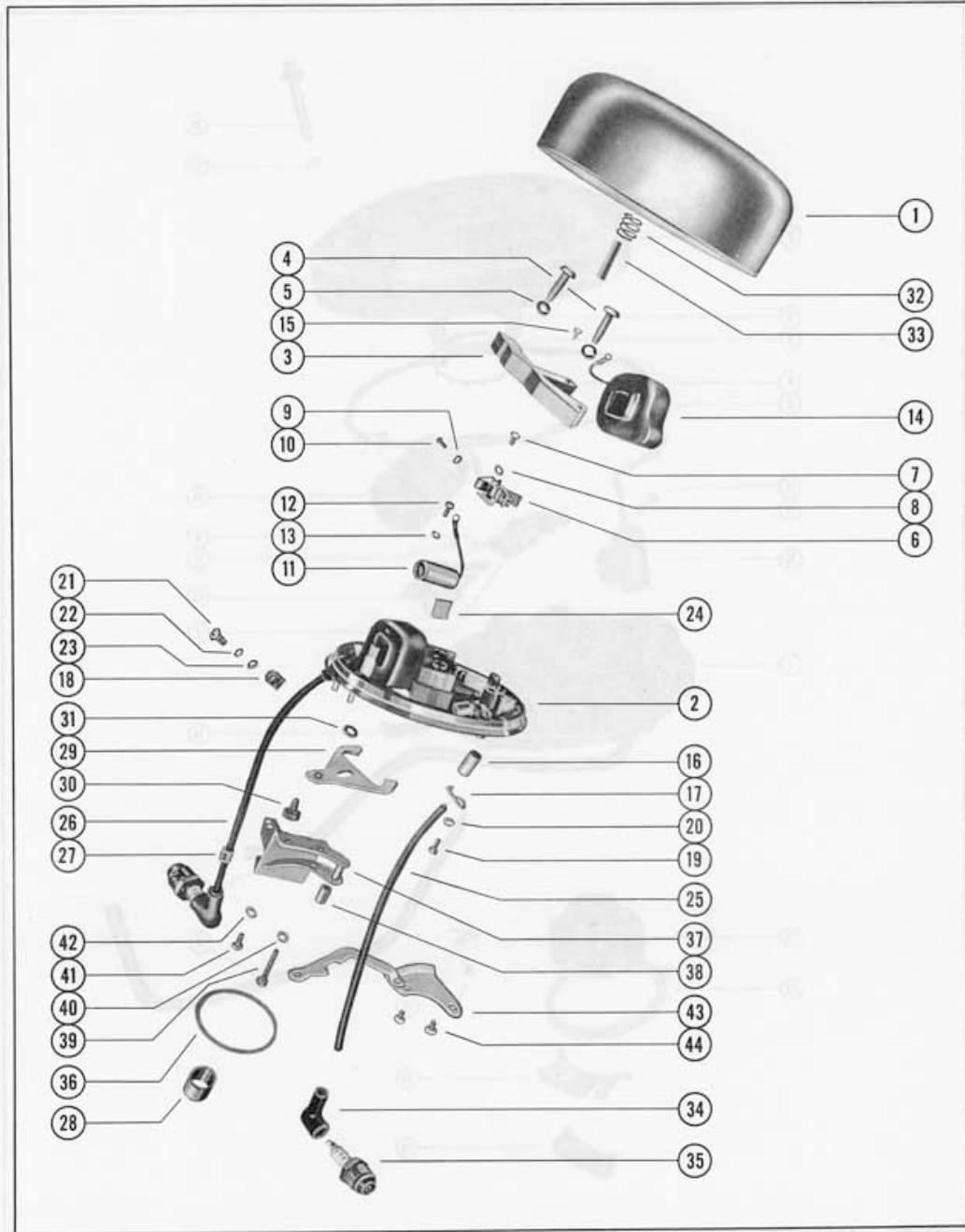


MAGNETO ASSEMBLY (PHELON)

PART NO.	REF. NO.	DESCRIPTION	MK6	MK6 -1	MK6 -2	MK6 -3	MK6 -4	MK6A
306-418	-	Magneto Assembly, Complete (Phelon)	1	1	*1	1	1	1
398-691	1	Flywheel	1	1	1	1	1	1
398-692A1	2	Stator Plate Assembly	1	1	1	1	1	1
398-692	3	Stator and Core	1	1	1	1	1	1
398-963	4	Screw, core fastening	4	4	4	4	4	4
13-21144	5	Lockwasher, core screw	4	4	4	4	4	4
398-174	6	Breaker Point Assembly	2	2	2	2	2	2
10-21133	7	Screw, fixed contact	2	2	2	2	2	2
13-21134	8	Lockwasher, fixed contact screw	2	2	2	2	2	2
12-21135	9	Washer, breaker connection screw	2	2	2	2	2	2
10-23976	10	Screw, breaker connection	2	2	2	2	2	2
398-693	11	Condenser	2	2	2	2	2	2
10-21136	12	Screw, condenser attaching	2	2	2	2	2	2
13-21134	13	Lockwasher, condenser screw	2	2	2	2	2	2
398-173	14	Coil, ignition	2	2	2	2	2	2
10-21130	15	Screw, ground terminal	2	2	2	2	2	2
32-21137	16	Tube, lead wire	2	2	2	2	2	2
398-179	17	Clamp, lead wire tube	2	2	2	2	2	2
398-182	18	Clamp, lead wire tube (plastic)	2	2	2	2	2	2
10-23977	19	Screw, lead wire clamp	2	2	2	2	2	2
13-21134	20	Lockwasher, lead wire clamp screw	2	2	2	2	2	2
10-23977	21	Screw, lead wire plastic clamp	2	2	2	2	2	2
13-21134	22	Lockwasher, plastic clamp screw	2	2	2	2	2	2
12-21135	23	Washer, plastic clamp screw	2	2	2	2	2	2
398-192	24	Wiper, cam (felt)	1	1	1	1	1	1
398-193	24	Wiper, cam (felt)	1	1	1	1	1	1
398-1085	25	Lead, high tension (bottom)	1	1	1	1	1	1
398-965	26	Lead, high tension (top)	1	1	1	1	1	1
20623	27	Marker, "top" - lead wire	1	1	1	1	1	1
398-694	28	Cam, breaker	1	1	1	1	1	1
23019	29	Clamp, magneto friction	2	2	2	2	2	2
10-23018	30	Screw, friction clamp to stator plate	2	2	2	2	2	2
13-26992	31	Lockwasher, friction clamp screw	2	2	2	2	2	2
24-22677	32	Spring, magneto	1	1	1	1	1	1
28-22676	33	Key, flywheel (2 1/16")	1	-	-	-	-	-
28-22818	33	Key, flywheel (1 29/32")	-	1	1	1	1	1
20119	34	Protector, spark plug	2	2	2	2	2	2
24-24949	--	Spring, lead wire guide	2	-	-	-	-	-
12-20192	--	Washer, lead wire guide spring	2	-	-	-	-	-
33-22805	35	Spark Plug (Champion J-7-J)	2	2	2	2	2	2
33-28916	35	Spark Plug (A. C. M-45)	2	2	2	2	2	2
15-22371	36	Shim, magneto pilot (.015)	1	1	1	1	1	1
22674A1	37	Throttle Cam Assembly	1	1	1	1	1	1
23-20618	38	Spacer, throttle cam	1	1	1	1	1	1
10-22031	39	Screw, throttle cam attaching (long)	1	1	1	1	1	-
10-28706	39	Screw, throttle cam attaching (long)	-	-	-	-	-	1
13-22675	40	Lockwasher, throttle cam screw	1	1	1	1	1	-
10-20616	41	Screw, throttle cam attaching (short)	1	1	1	1	1	-
10-28707	41	Screw, throttle cam attaching (short)	-	-	-	-	-	1
13-26991	42	Lockwasher, throttle cam screw	1	1	1	1	1	-
22904A1	43	Limit Plate and Link Assembly	1	1	1	1	1	1
10-22028	44	Screw, limit plate fastening	2	2	2	2	2	2

* Refer to page 5 for those Mark 6-2 engines produced with Scintilla Magneto.

MAGNETO ASSEMBLY (PHELON)



MAGNETO ASSEMBLY (SCINTILLA)

PART NO.	REF. NO.	DESCRIPTION	MKG -2
308-440	-	Magneto Assembly, Complete (Scintilla)	1
399-119	1	Plate, stator	1
399-131	2	Cover, magneto	1
12-20885	3	Washer, felt - magneto cover	1
399-132	4	Ring, lock - magneto cover	1
27-20600	5	Gasket, magneto cover	1
10-20879	6	Screw and Lockwasher, breaker assembly mounting	2
10-20880	-	Screw and Lockwasher, cable clip	2
399-1151	-	Clip, cable	2
399-121A1	7	Breaker Assembly	2
13-20378	8	Lockwasher, terminal nut	2
11-20881	9	Nut, terminal	2
10-20883	10	Screw, condenser mounting	2
13-20882	11	Lockwasher, condenser mounting screw	2
399-123	12	Condenser	2
399-125	13	Coil, ignition	2
399-126	14	Clip, coil	4
399-129	15	Insulator, high tension lead	2
399-1152	16	Clamp, high tension lead	2
10-20884	17	Screw and Lockwasher, high tension lead clamp	2
12-20878	--	Washer, high tension lead clamp screw	2
399-1248	18	Lead, high tension - short	1
399-1154	19	Lead, high tension - long	1
399-1155	20	Magnet, rotating	1
10-20602	21	Screw and Lockwasher, cover fastening	4
12-20603	22	Washer, cover fastening screw	4
204-455	--	Flywheel	1
28-22818	--	Key, flywheel	1
15-22371	23	Shim, magneto pilot (.015)	1
24-24347	24	Spring, magneto hold down	2
399-787	25	Plate, magneto flange	1
399-459A1	--	Limit Plate and Link Assembly	1
10-23095	--	Screw, limit plate and flange plate fastening	4

NOTE: Serial numbers of Mark 6-2 engines built with 308-440 Magneto Assembly:

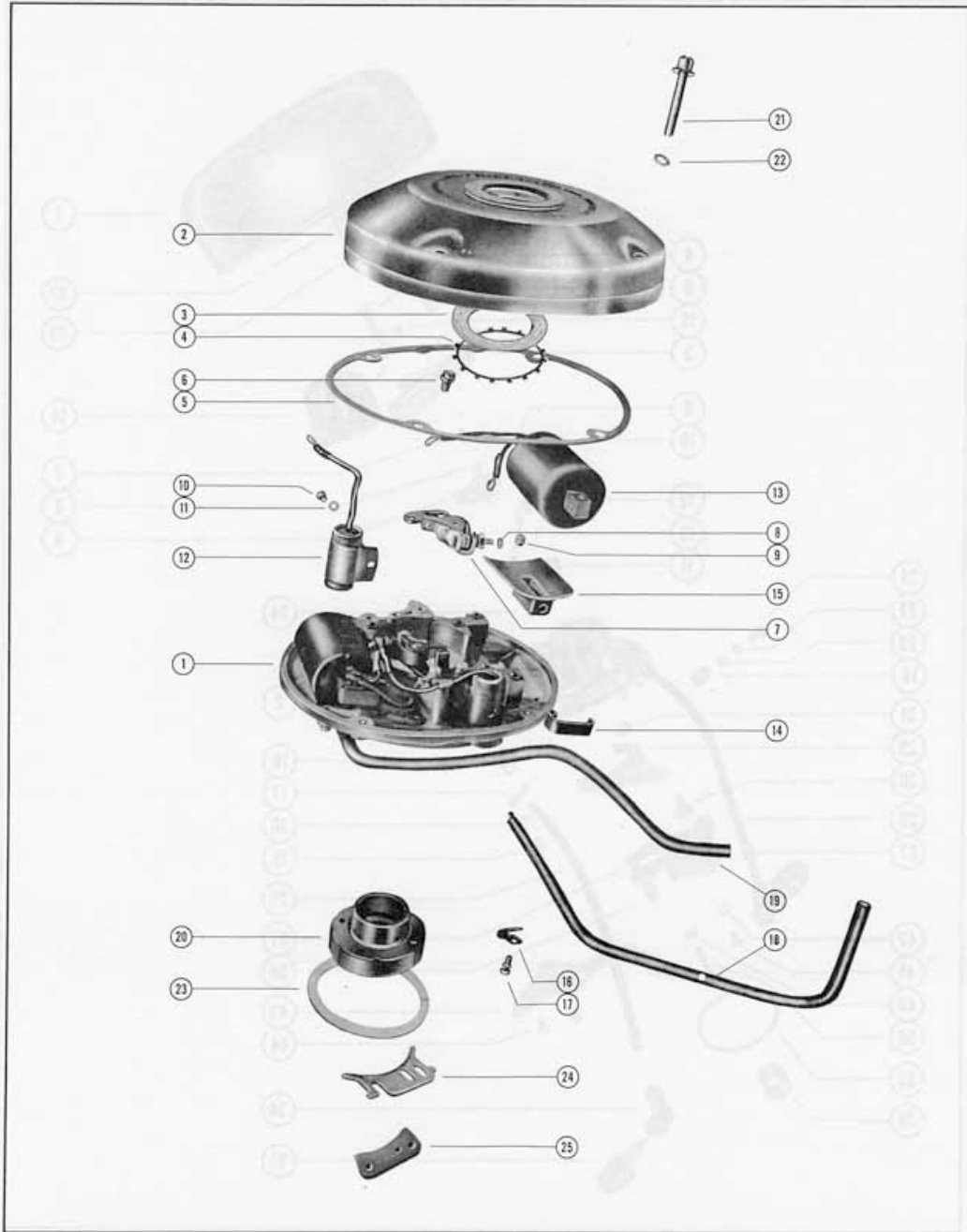
902565 thru 905499

950276 thru 951308

953669 thru 955803

All other Mark 6 engines were built with 306-418 Magneto Assembly.

MAGNETO ASSEMBLY (SCINTILLA)



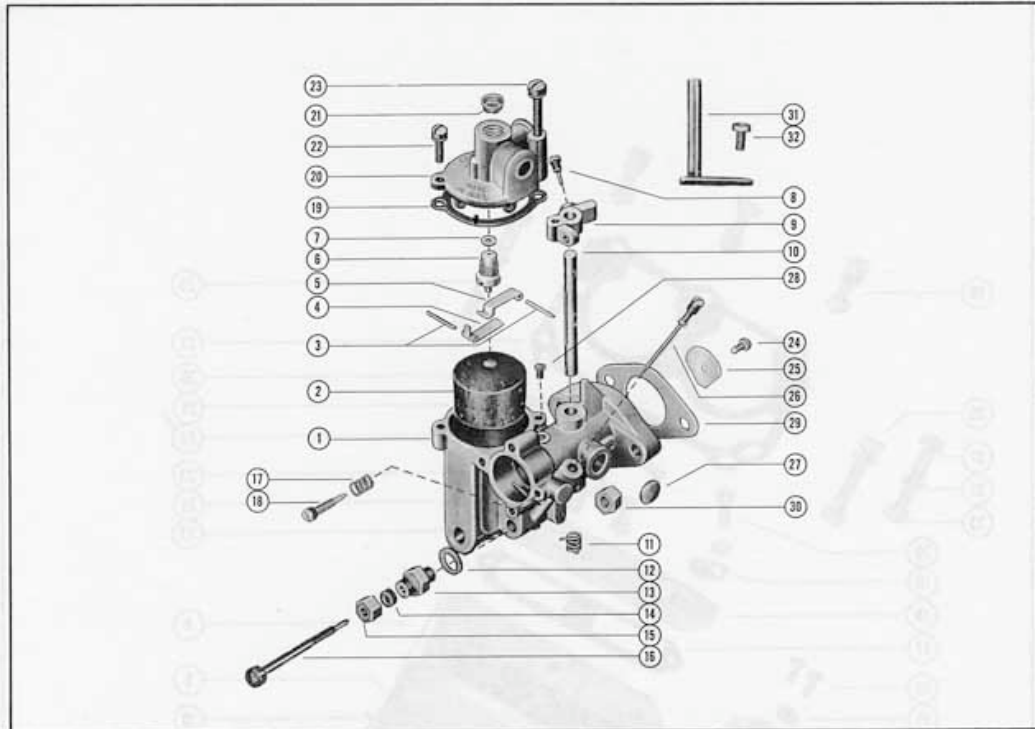
CARBURETOR ASSEMBLY

PART NO.	REF. NO.	DESCRIPTION	MKG	MKG -1	MKG -2	MKG -3	MKG -4	MKG A
1304-415	1	Carburetor Assembly, Complete	1	1	1	1	1	1
1399-110A1	2	Float Assembly	1	1	1	1	1	1
17-20853	3	Pin, float lever pinion	2	2	2	2	2	2
1399-102	4	Lever, float (lower)	1	1	1	1	1	1
1399-101	5	Lever, float (upper)	1	1	1	1	1	1
1399-1138	6	Inlet Needle and Seat	1	1	1	1	1	1
27-25033	7	Gasket, inlet needle and seat	1	1	1	1	1	1
10-20847	8	Screw, throttle stop lever	1	1	1	1	1	1
1399-97	9	Lever, throttle stop	1	1	1	1	1	1
1399-438	10	Shaft, throttle	1	1	1	1	1	1
24-20869	11	Spring, throttle return	1	1	1	1	1	1
27-20848	12	Gasket, adjustment screw gland	1	1	1	1	1	1
1399-94	13	Gland, main adjustment screw	1	1	1	1	1	1
1399-108	14	Packing, main adjustment screw	1	1	1	1	1	1
11-20849	15	Nut, main adjustment screw packing	1	1	1	1	1	1
1399-702	16	Screw, main adjustment	1	1	1	1	1	1
24-20856	17	Spring, idle adjustment screw	1	1	1	1	1	1
1399-220	18	Screw, idle adjustment	1	1	1	1	1	1
1399-99	19	Gasket, float bowl cover	1	1	1	1	1	1
1399-701	20	Cover, float bowl	1	1	1	1	1	1
1399-436	21	Screen, inlet	1	1	1	1	1	1
10-20854	22	Screw and Lockwasher, cover mounting (short)	1	1	1	1	1	1
10-20857	23	Screw and Lockwasher, cover mounting (long)	1	1	1	1	1	1
10-23035	24	Screw and Lockwasher, throttle shutter	1	1	1	1	1	1
1399-699	25	Shutter, throttle	1	1	1	1	1	1
1399-700A1	26	Tube Assembly, by-pass	1	1	1	1	1	1
19-20011	27	Welch Plug, body channel	1	1	1	1	1	1
1399-95	--	Lead Shot, channel plug	2	2	2	2	2	2
10-20870	28	Screw, drill plug - outlet tube	1	1	1	1	1	1
1399-961	--	Gasket and Packing Set	1	1	1	1	1	1
1399-810	--	Repair Parts Kit	1	1	1	1	1	1
27-22023	29	Gasket, carburetor to crankcase	1	1	1	1	1	1
12-20583	--	Washer, carburetor mounting stud	2	2	2	2	2	-
11-21825	30	Nut, carburetor mounting stud	2	2	2	2	2	2
20596A2	31	Throttle Lever Assembly	1	1	1	1	1	1
10-20597	32	Screw, throttle lever to carburetor	1	1	1	1	1	1

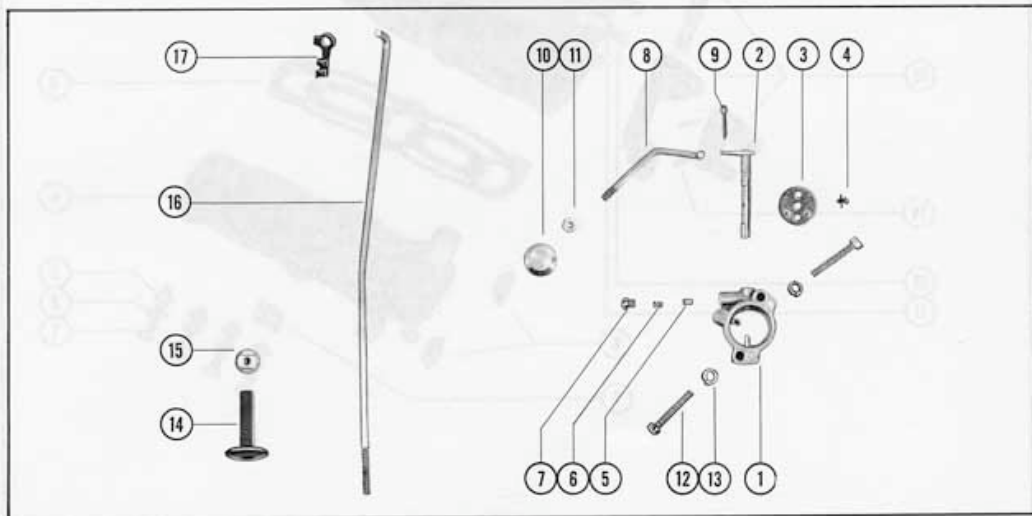
CHOKE ASSEMBLY

PART NO.	REF. NO.	DESCRIPTION	MKG	MKG -1	MKG -2	MKG -3	MKG -4	MKG A
22944A1	1	Choke Assembly	1	1	1	1	1	1
17-23034	-	Groove Pin, body	1	1	1	1	1	1
1399-449	2	Shaft Assembly	1	1	1	1	1	1
1399-450	3	Shutter	1	1	1	1	1	1
10-23035	4	Screw and Lockwasher, choke shutter	1	1	1	1	1	1
1399-451	5	Plug, friction	1	1	1	1	1	1
24-23233	6	Spring, friction plug	1	1	1	1	1	1
1399-453	7	Plug Screw, friction	1	1	1	1	1	1
24829	8	Rod, choke	1	1	1	1	1	1
18-20180	9	Cotter Pin, choke rod to shaft assembly	1	1	1	1	1	1
22274	10	Knob, choke	1	1	1	1	1	1
11-21923	11	Nut, choke rod stop	1	1	1	1	1	1
10-23702	12	Screw, choke assembly to baffle	2	2	2	2	2	-
10-28712	12	Screw, choke assembly to baffle	-	-	-	-	-	2
13-26996	13	Lockwasher, choke assembly to baffle screw	2	2	2	2	2	-
23918	14	Knob, neutral	1	1	1	1	1	1
22872	15	Cam, neutral	1	1	1	1	1	1
22873	16	Rod, neutral	1	1	1	1	1	1
54-22900	17	Clevis Clip, neutral rod	1	1	1	1	1	1

CARBURETOR ASSEMBLY



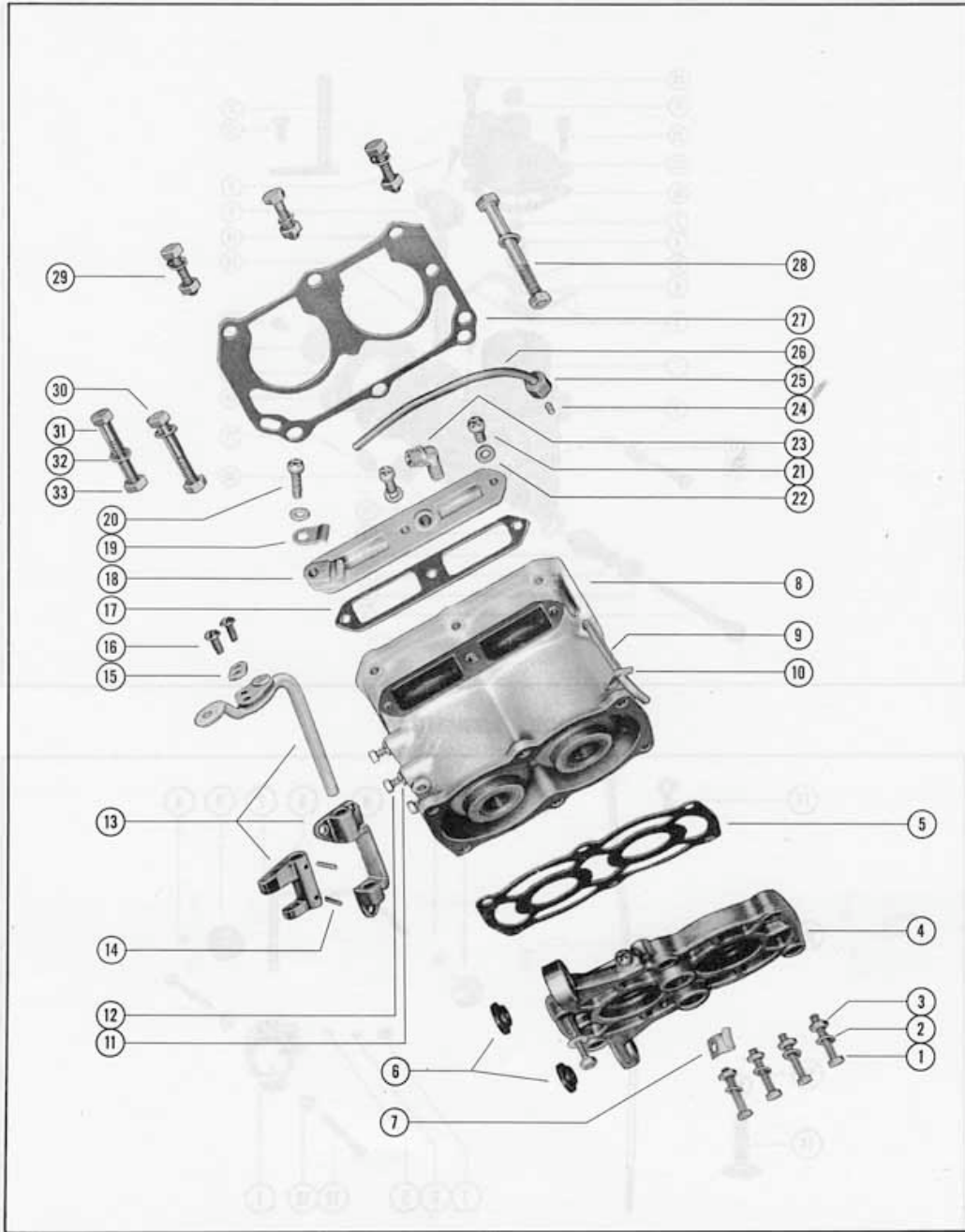
CHOKE ASSEMBLY



CYLINDER BLOCK ASSEMBLY

PART NO.	REF. NO.	DESCRIPTION	MK6	MK6 -1	MK6 -2	MK6 -3	MK6 -4	MK6A
10-22387	1	Screw, cylinder block cover (1")	4	6	6	6	6	6
10-22958	1	Screw, cylinder block cover (1 1/8")	2	-	-	-	-	-
12-20128	2	Washer, cylinder block cover screw	6	6	6	6	6	6
11-20645	3	Nut, cylinder block cover screw	6	6	6	6	6	6
1004-410	4	Cover, cylinder block	1	1	1	1	1	1
27-22655	5	Gasket, cylinder block cover to cylinder block	1	1	1	1	1	1
23-24806	6	Bushing, cylinder block cover	2	2	2	2	2	2
54-22595	7	Clip, ignition wire	2	2	2	2	2	2
809-380A5	8	Cylinder Block Assembly	1	1	1	1	1	1
19-21688	-	Welch Plug (1/2)	2	2	2	2	2	2
19-22579	-	Welch Plug (3/8)	3	3	3	3	3	3
32-22607	9	Tube, bleeder - cylinder block	1	1	1	1	1	1
54-22577	10	Clip, bleeder tube	1	1	1	1	1	1
13-26996	11	Lockwasher, bracket to cylinder block screw	3	3	3	3	3	-
10-22444	12	Screw, control bracket to cylinder block	3	3	3	3	3	-
10-28708	12	Screw, control bracket to cylinder block	-	-	-	-	-	3
20995A2	13	Pivot and Link Lever Assembly	1	1	1	1	1	1
17-22515	14	Pin, roll - pivot and link lever to bracket	2	2	2	2	2	2
54-22808	15	Clamp, control cable	1	1	1	1	1	1
10-21278	16	Screw, control cable clamp	2	2	2	2	2	2
27-22656	17	Gasket, intake cover plate to cylinder block	1	1	1	1	1	1
23534	18	Plate, intake cover	1	1	1	1	1	1
54-22517	19	Clip, control cable guide tube	1	1	1	1	1	1
10-22657	20	Screw, intake cover plate to cylinder block (3/4")	1	1	1	1	1	-
10-28789	20	Screw, intake cover plate to cylinder block (3/4")	-	-	-	-	-	1
10-22444	21	Screw, intake cover plate to cylinder block (1/2")	2	2	2	2	2	-
10-20665	21	Screw, intake cover plate to cylinder block (1/2")	-	-	-	-	-	2
12-20128	22	Washer, intake cover plate screw	3	3	3	3	3	3
22-22947	23	Elbow, intake cover plate to pressure line	1	1	1	1	1	1
22322	24	Sleeve, compression	1	1	1	1	1	1
11-22645	25	Nut, compression	1	1	1	1	1	1
32-22585	26	Tubing, control cable guide (upper end)	1	1	1	1	1	1
27-22518	27	Gasket, cylinder block to crankcase	1	1	1	1	1	1
10-22658	28	Screw, cylinder block to crankcase (2 3/8")	1	1	1	1	1	1
10-20653	29	Screw, cylinder block to crankcase (1")	3	3	3	3	3	3
10-22660	30	Screw, cylinder block to crankcase (1 3/4")	1	1	1	1	1	1
10-22659	31	Screw, cylinder block to crankcase (1 5/8")	1	1	1	1	1	1
12-20583	32	Washer, cylinder block to crankcase screw	6	6	6	7	7	-
11-21825	33	Nut, cylinder block to crankcase screw	6	6	6	6	6	6

CYLINDER BLOCK ASSEMBLY



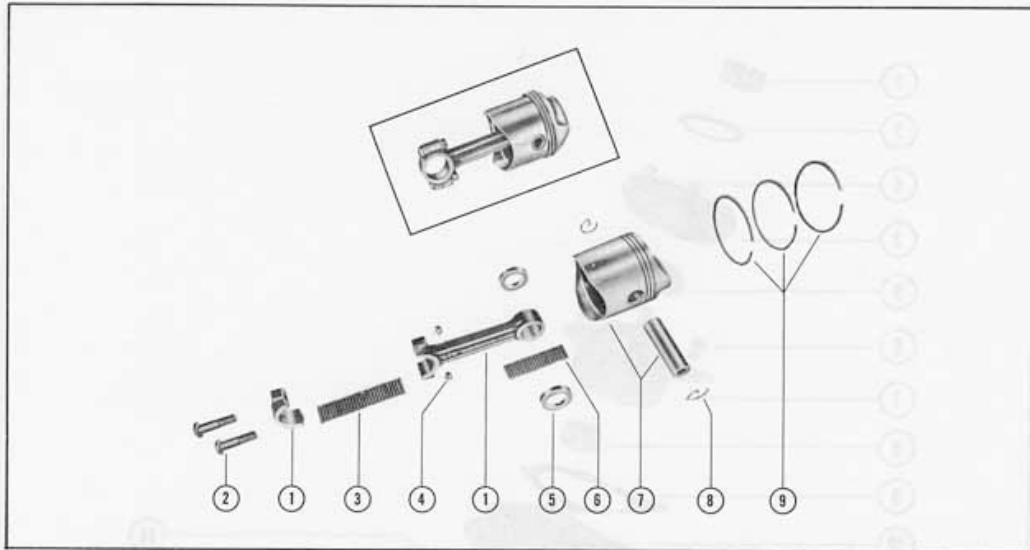
PISTON AND CONNECTING ROD ASSEMBLY

PART NO.	REF. NO.	DESCRIPTION	MK6	MK6 -1	MK6 -2	MK6 -3	MK6 -4	MK6A
605-378A1	1	Connecting Rod Assembly	2	2	2	2	2	2
10-21637	2	Screw, connecting rod	4	4	4	4	4	4
29-22591	3	Needle Bearing, crankpin	46	46	46	46	46	46
11-20565	4	Nut, connecting rod screw	4	4	4	4	4	4
12-22592	5	Washer, needle bearing retaining	4	4	4	4	4	4
29-22591	6	Needle Bearing, piston pin	34	34	34	34	34	34
703-379A1	7	Piston and Piston Pin Assembly	2	2	2	2	2	2
40-22652	8	Lock Ring, piston pin	4	4	4	4	4	4
39-22593	9	Piston Ring	6	6	6	6	6	6

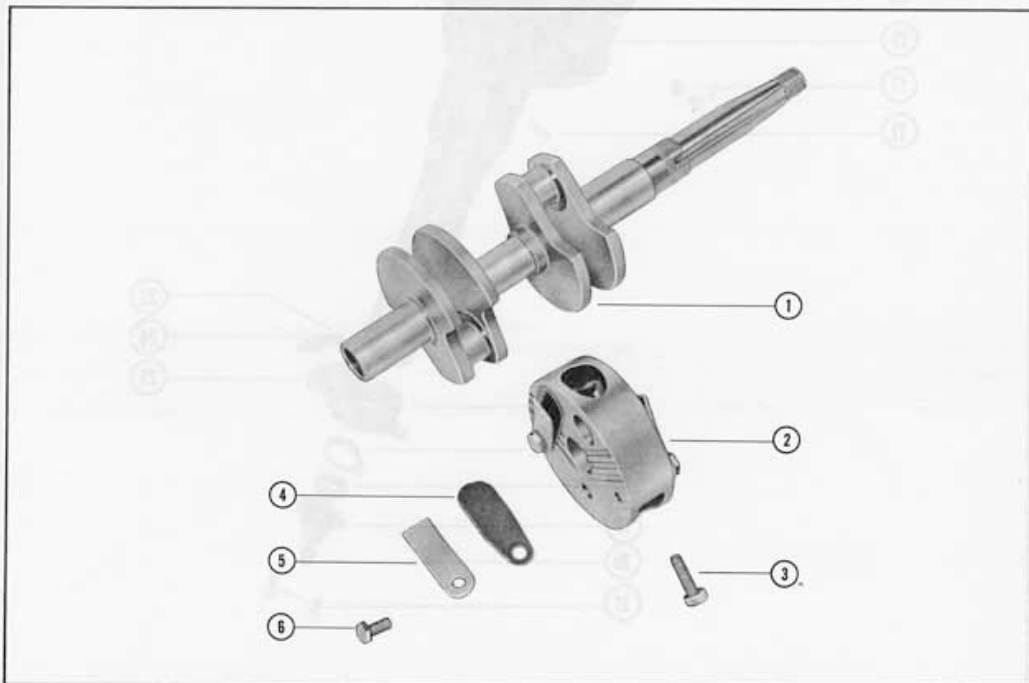
CRANKSHAFT AND CENTER MAIN BEARING

PART NO.	REF. NO.	DESCRIPTION	MK6	MK6 -1	MK6 -2	MK6 -3	MK6 -4	MK6A
409-388	1	Crankshaft	1	1	1	1	1	1
511-386	2	Center Main Bearing	1	1	1	1	1	1
10-22587	3	Screw, center main bearing clamping	2	2	2	2	2	2
34-23087	4	Reed Set, matched	1	1	1	1	1	1
34-21721	5	Plate, reed stop	4	4	4	4	4	4
10-21296	6	Screw, reed stop plate attaching	4	4	4	4	4	4

PISTON AND CONNECTING ROD ASSEMBLY



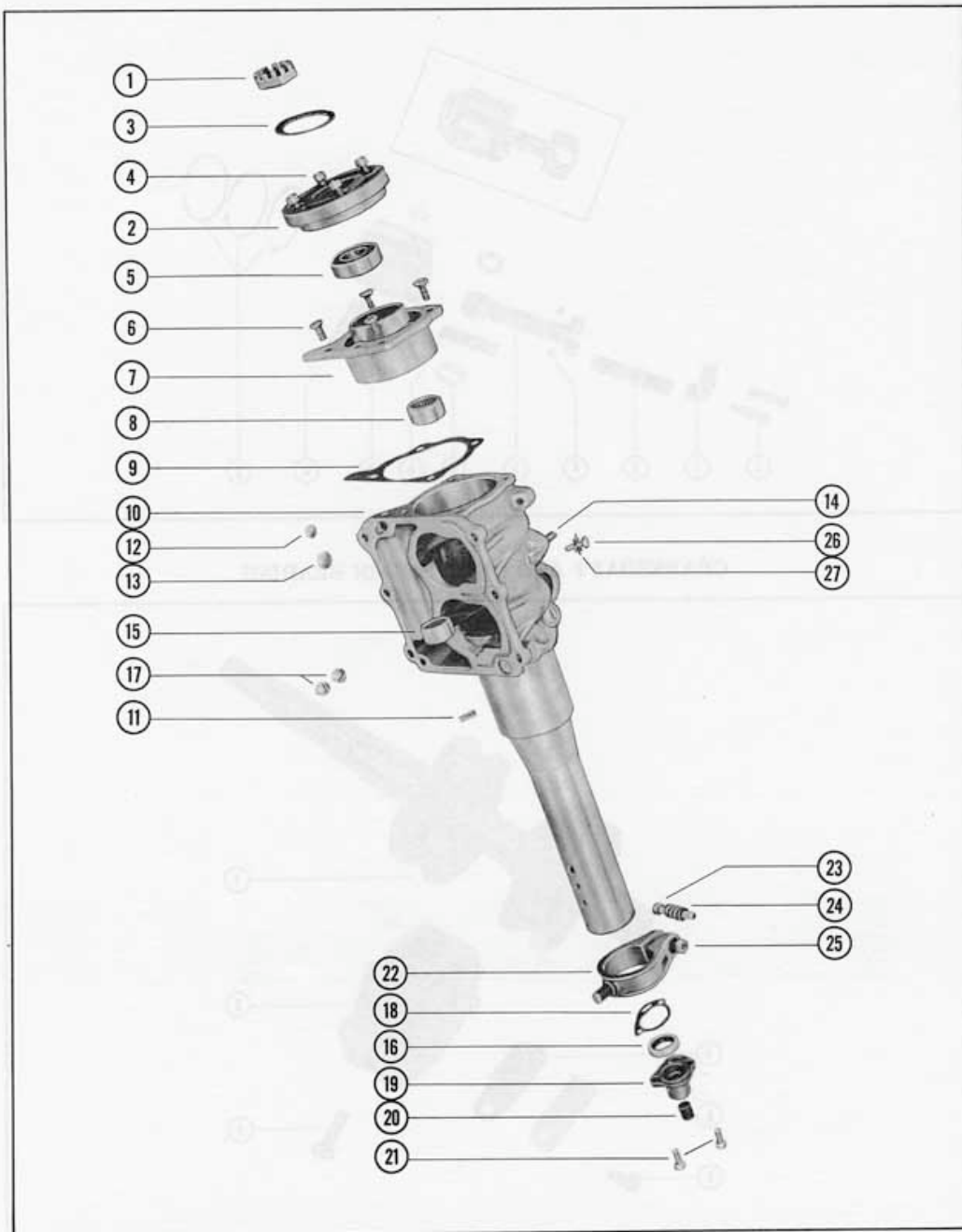
CRANKSHAFT AND CENTERMAIN BEARING



CRANKCASE AND BEARING HOUSING ASSEMBLY

PART NO.	REF. NO.	DESCRIPTION	MK6	MK6 -1	MK6 -2	MK6 -3	MK6 -4	MK6A
11-22801	1	Nut, bearing lock	1	1	1	1	1	1
1110-265	2	Cap, bearing housing	1	1	1	1	1	1
12-22646	3	Washer, upper bearing (dished thrust)	1	1	1	1	1	1
10-22651	4	Screw, bearing housing cap to bearing housing	4	4	4	4	4	4
30-21710	5	Ball Bearing, upper bearing housing	1	1	1	1	1	1
15-20919	-	Shim, ball bearing to bearing housing (.002-3-5)	AR	AR	AR	AR	AR	AR
10-22589	6	Screw, upper bearing housing to crankcase	4	4	4	4	4	4
1121-414A2	7	Bearing Housing Assembly, upper	1	1	1	1	1	1
31-21638	8	Roller Bearing, upper bearing housing	1	1	1	1	1	1
27-22852	9	Gasket, upper bearing housing to crankcase	1	1	1	1	1	1
913-955A3	10	Crankcase Assembly	1	1	1	1	1	-
913-1494A3	10	Crankcase Assembly	-	-	-	-	-	1
17-22642	11	Pin, groove - crankcase to pivot tube	2	2	2	2	2	2
19-22579	12	Welch Plug (3/8")	1	1	1	1	1	1
19-21688	13	Welch Plug (1/2")	1	1	1	1	1	1
16-21723	14	Stud, carburetor mounting	2	2	2	2	2	2
31-22640	15	Roller Bearing, crankcase	1	1	1	1	1	-
31-28631	15	Roller Bearing, crankcase	-	-	-	-	-	1
26-22580	16	Oil Seal, water inlet cap	1	1	1	1	1	1
22-21290	17	Plug, pipe	2	2	2	2	2	2
27-21719	18	Gasket, water inlet cap	1	1	1	1	1	1
22582A1	19	Water Inlet Cap Assembly	1	1	1	1	1	1
23-22583	20	Bushing, water inlet cap	1	1	1	1	1	1
13-26996	--	Lockwasher, water inlet cap screw	2	2	2	2	2	-
10-20568	21	Screw, water inlet cap to bearing housing	2	2	2	2	2	-
10-20411	21	Screw, water inlet cap to bearing housing	-	-	-	-	-	2
22726	22	Ring, co-pilot	1	1	1	1	1	1
10-22728	23	Screw, co-pilot ring	1	1	1	1	1	1
24-22727	24	Spring, co-pilot ring screw	1	1	1	1	1	1
11-20890	25	Nut, co-pilot ring screw	1	1	1	1	1	1
10-20665	26	Screw, center main bearing locking	1	1	1	1	1	1
13-21709	27	Lockwasher, center main bearing locking screw	1	1	1	1	1	1

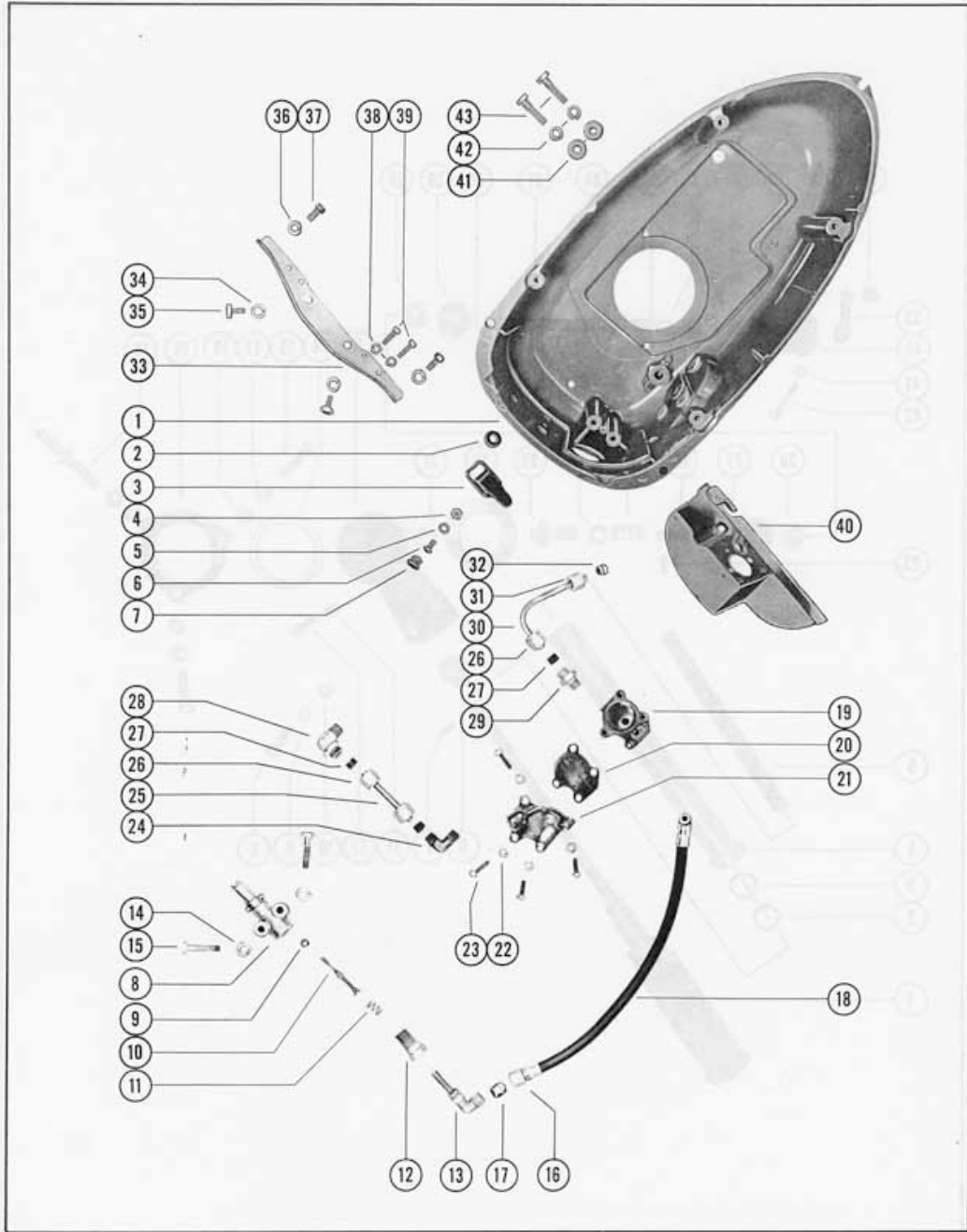
CRANKCASE AND BEARING HOUSING ASSEMBLY



BOTTOM COWL AND FUEL PUMP ASSEMBLY

PART NO.	REF. NO.	DESCRIPTION	MKG	MKG -1	MKG -2	MKG -3	MKG -4	MKGA
120-889A2	1	Bottom Cowl Assembly	1	1	1	1	1	-
120-1497	1	Cowl, bottom	-	-	-	-	-	1
25-22940	2	Grommet, choke rod	1	1	1	1	1	1
24947A1	3	Draw Bolt Assembly	1	1	1	1	1	1
11-20645	4	Nut, draw bolt screw	1	1	1	1	1	-
11-24656	4	Nut, draw bolt screw	-	-	-	-	-	1
13-26996	5	Lockwasher, draw bolt screw	1	1	1	1	1	-
10-22022	6	Screw, draw bolt assembly to bottom cowl	1	1	1	1	1	-
10-21296	6	Screw, draw bolt assembly to bottom cowl	-	-	-	-	-	1
23665	7	Plug Button, bottom cowl	1	1	1	1	1	1
22833	8	Adaptor, check unit	1	1	1	1	1	1
25-20415	9	"O" Ring, adaptor stem	1	1	1	1	1	1
23583	10	Stem, check unit adaptor	1	1	1	1	1	1
24-23582	11	Spring, check unit adaptor stem	1	1	1	1	1	1
22967	12	Filter Housing, adaptor to elbow assembly	1	1	1	1	1	1
22-23588A1	13	Elbow Assembly	1	1	1	1	1	1
13-26992	14	Lockwasher, adaptor to bottom cowl screw	2	2	2	2	2	-
10-22378	15	Screw, adaptor to bottom cowl	2	2	2	2	2	-
10-28714	15	Screw, adaptor to bottom cowl	-	-	-	-	-	2
11-21310	16	Nut, fuel line - adaptor to fuel pump	1	1	1	1	1	1
23-21309	17	Sleeve, fuel line - adaptor to fuel pump	1	1	1	1	1	1
32-23542	18	Fuel Line, adaptor to fuel pump	1	1	1	1	1	1
22932A1	19	Fuel Pump Housing Assembly	1	1	1	1	1	1
21-22974A1	--	Check Valve Assembly	2	2	2	2	2	2
22934	20	Diaphragm, fuel pump	1	1	1	1	1	1
22933	21	Cover, fuel pump	1	1	1	1	1	1
13-26996	22	Lockwasher, fuel pump housing screw	4	4	4	4	4	-
10-20411	23	Screw, fuel pump housing to cover	4	4	4	4	4	-
10-28704	23	Screw, fuel pump housing to cover	-	-	-	-	-	4
22-22987	24	Elbow, fuel pump outlet	1	1	1	1	1	1
32-23550	25	Line, pressure - fuel pump to intake cover	1	1	1	1	1	1
11-22948	26	Nut, pressure line to cover and carburetor	3	3	3	3	3	3
22-22946	27	Sleeve, pressure line to cover and carburetor	3	3	3	3	3	3
22-22947	28	Elbow, fuel inlet	1	1	1	1	1	1
22-22949	29	Connector, pressure line	1	1	1	1	1	1
32-24787	30	Fuel Line, fuel pump to carburetor	1	1	1	1	1	1
11-21310	31	Nut, fuel line to fuel pump and carburetor	1	1	1	1	1	1
23-21309	32	Sleeve, fuel line to fuel pump and carburetor	1	1	1	1	1	1
22878	33	Bracket, crankcase to bottom cowl	1	1	1	1	1	1
13-26992	34	Lockwasher, bracket to crankcase screw	2	2	2	2	2	-
10-20031	35	Screw, bracket to crankcase	2	2	2	2	2	-
10-28709	35	Screw, bracket to crankcase	-	-	-	-	-	2
13-22773	36	Lockwasher, crankcase bracket screw	2	2	2	2	2	-
10-24222	37	Screw, crankcase bracket to bottom cowl	2	2	2	2	2	-
10-28713	37	Screw, crankcase bracket to bottom cowl	-	-	-	-	-	2
13-26996	38	Lockwasher, fuel pump mounting screw	2	2	2	2	2	-
10-22444	39	Screw, fuel pump to crankcase bracket	2	2	2	2	2	-
10-28705	39	Screw, fuel pump to crankcase bracket	-	-	-	-	-	2
22915A1	40	Baffle Assembly	1	1	1	1	1	1
23-24806	--	Bushing, cylinder block cover to bottom cowl	2	2	2	2	2	2
12-23538	41	Washer, cylinder block cover screw	2	2	2	2	2	2
13-26992	42	Lockwasher, cylinder block cover screw	2	2	2	2	2	-
10-22378	43	Screw, cylinder block cover to bottom cowl	2	2	2	2	2	-
10-28717	43	Screw, cylinder block cover to bottom cowl	-	-	-	-	-	2

BOTTOM COWL AND FUEL PUMP ASSEMBLY

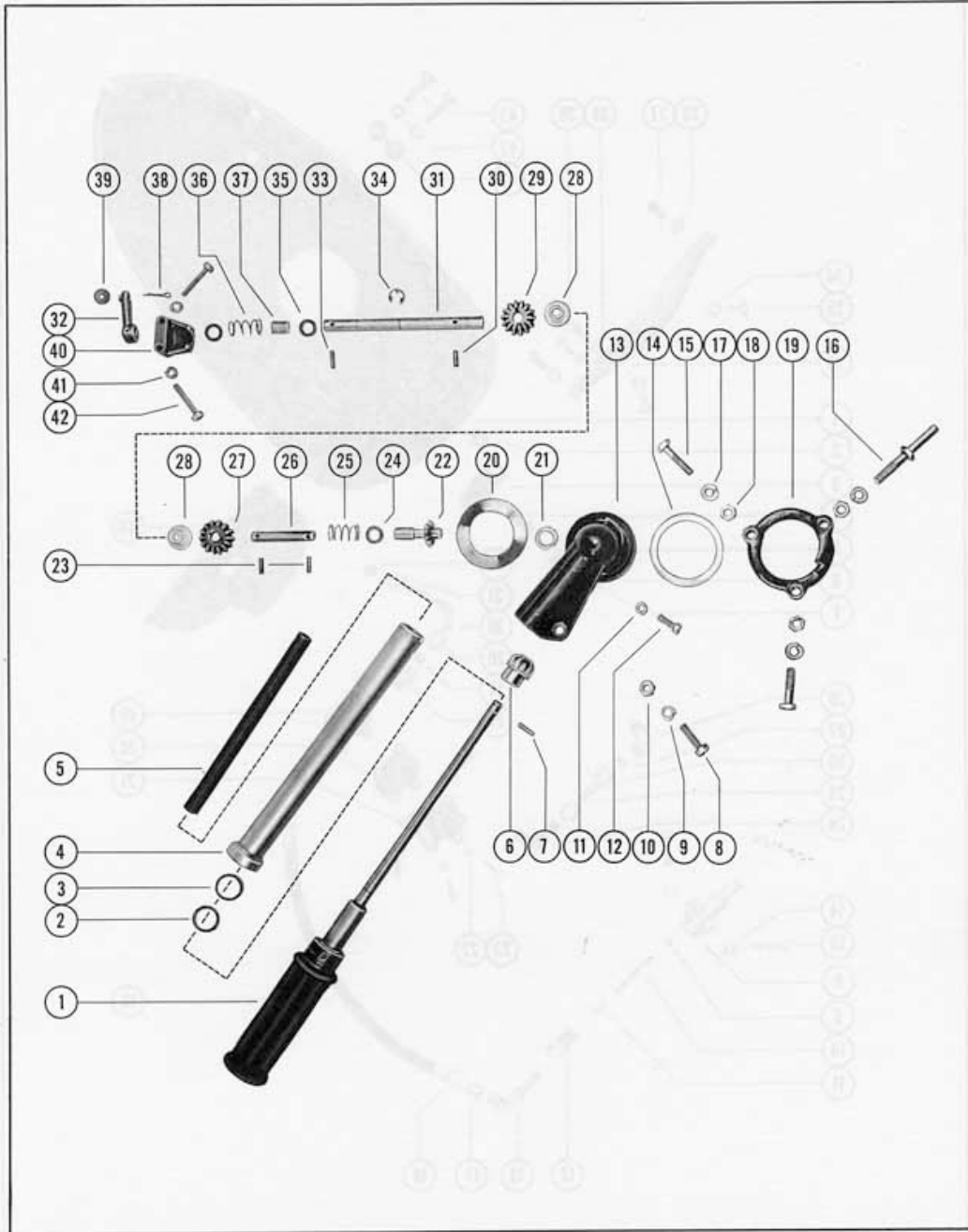


STEERING HANDLE ASSEMBLY

PART NO.	REF. NO.	DESCRIPTION	MKG	MKG -1	MKG -2	MKG -3	MKG -4	MKG A
*22905A4	-	Steering Handle Assembly	1	1	-	-	-	-
22905A6	-	Steering Handle Assembly	-	1	1	1	1	1
22905A1	1	Handle and Grip Assembly	1	1	1	1	1	1
15-20729	2	Shim, gear to steering handle tube (.010)	AR	AR	AR	AR	AR	AR
13-20730	3	Washer, wave - gear to steering handle tube	1	1	1	1	1	1
*22912A3	4	Steering Handle Tube Assembly	1	1	-	-	-	-
25247A1	4	Steering Handle Tube Assembly	-	1	1	1	1	1
24-24941	5	Spring, anti-rattle	1	1	1	1	1	1
43-22877	6	Gear, steering handle shaft	1	1	1	1	1	1
17-22896	7	Pin, roll - gear fastening	1	1	1	1	1	1
10-22486	8	Screw, elbow clamping	1	1	1	1	1	1
13-22773	9	Lockwasher, elbow clamping screw	1	1	1	1	1	-
11-21825	10	Nut, elbow clamping screw	1	1	1	1	1	-
11-20184	10	Nut, elbow clamping screw	-	-	-	-	-	1
13-26996	11	Lockwasher, elbow to steering handle tube screw	1	1	1	1	1	-
10-20411	12	Screw, elbow to steering handle tube	1	1	1	1	1	-
10-28710	12	Screw, elbow to steering handle tube	-	-	-	-	-	1
*22849A2	13	Elbow Assembly, steering handle	1	1	-	-	-	-
25248A1	13	Elbow Assembly, steering handle	-	1	1	1	1	1
15-22889	14	Shim, retaining ring to elbow (.015)	1	1	1	1	1	1
10-21091	15	Screw, retaining ring to bottom cowl	2	2	2	2	2	-
10-20653	15	Screw, retaining ring to bottom cowl	-	-	-	-	-	2
10-24851	16	Bolt, stop - retaining ring to bottom cowl	1	1	1	1	1	1
13-26992	17	Lockwasher, retaining ring screw and stop bolt	3	3	3	3	3	-
11-20088	18	Nut, retaining ring screw and stop bolt	3	3	3	3	3	-
11-20184	18	Nut, retaining ring screw and stop bolt	-	-	-	-	-	3
53-22850	19	Ring, retaining - elbow assembly	1	1	1	1	1	1
13-22888	20	Washer, wave - retaining ring to cowl	1	1	1	1	1	1
*12-23022	21	Washer, thrust - gear to elbow	1	1	-	-	-	-
12-23736	21	Washer, thrust - gear to elbow	-	1	1	1	1	1
43-22858A1	22	Gear and Coupling Assembly	1	1	1	1	1	1
17-22863	23	Pin, roll - gear and coupling to horizontal shaft	2	2	2	2	2	2
12-22894	24	Washer, horizontal shaft	1	1	1	1	1	1
24-22984	25	Spring, horizontal shaft	1	1	1	1	1	1
22893	26	Shaft, horizontal - speed control	1	1	1	1	1	1
43-22856	27	Gear, horizontal shaft	1	1	1	1	1	1
23-22981	28	Bushing, nylon - horizontal and vertical shaft	2	2	2	2	2	2
43-22856	29	Gear, vertical shaft	1	1	1	1	1	1
17-22863	30	Pin, roll - gear to vertical shaft	1	1	1	1	1	1
22895A1	--	Vertical Shaft Assembly	1	1	1	1	1	1
22892	31	Shaft, vertical	1	1	1	1	1	1
22895	32	Lever, vertical shaft	1	1	1	1	1	1
17-22896	33	Pin, roll - lever to vertical shaft	1	1	1	1	1	1
53-22899	34	"E" Ring, retaining	1	1	1	1	1	1
12-22894	35	Washer, vertical shaft	2	2	2	2	2	2
24-22984	36	Spring, vertical shaft	1	1	1	1	1	1
23-23638	37	Sleeve, vertical shaft	1	1	1	1	1	1
18-20180	38	Cotter Pin, magneto link fastening	1	1	1	1	1	1
12-22907	39	Washer, magneto link fastening	1	1	1	1	1	1
22982	40	Support, vertical shaft	1	1	1	1	1	1
13-26996	41	Lockwasher, support to crankcase bracket screw	2	2	2	2	2	-
10-23015	42	Screw, support to crankcase bracket	2	2	2	2	2	-
10-28711	42	Screw, support to crankcase bracket	-	-	-	-	-	2

* Concluded with Serial No. 893677 on Mark 6-1.

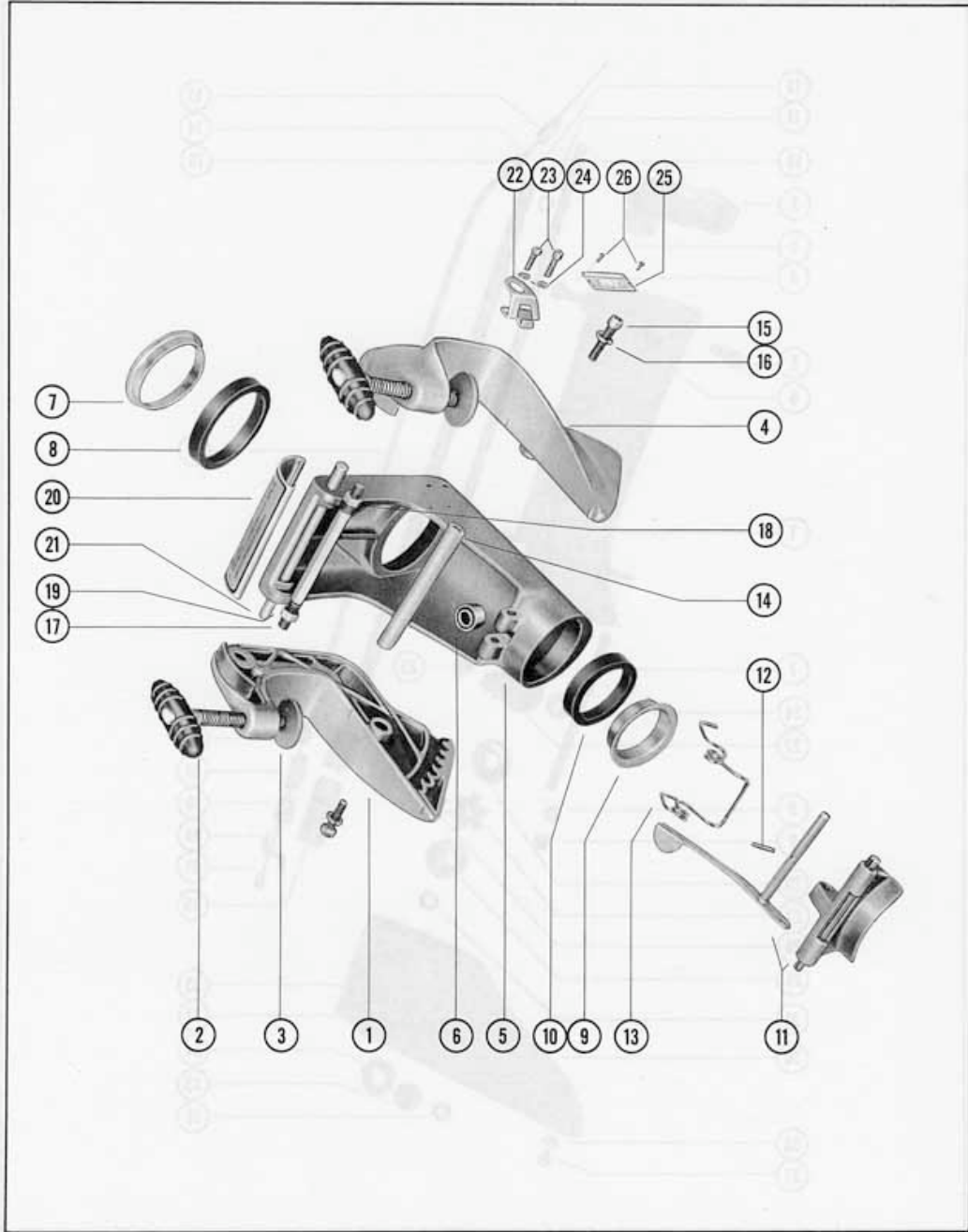
STEERING HANDLE ASSEMBLY



CLAMP AND SWIVEL BRACKET ASSEMBLY

PART NO.	REF. NO.	DESCRIPTION	MKG	MKG -1	MKG -2	MKG -3	MKG -4	MKG A
1411-407A2	1	Clamp Bracket Assembly (starboard side)	1	-	-	-	-	-
1411-409A4	1	Clamp Bracket Assembly (starboard side)	-	1	1	1	1	1
24876A1	2	Thumb Screw Assembly	1	-	-	-	-	-
22373A1	2	Thumb Screw Assembly	-	1	1	1	1	1
12-20214	3	Washer, thumb screw	1	1	1	1	1	1
1410-406A2	4	Clamp Bracket Assembly (port side)	1	-	-	-	-	-
1410-408A2	4	Clamp Bracket Assembly (port side)	-	1	1	1	1	1
24876A1	2	Thumb Screw Assembly	1	-	-	-	-	-
22373A1	2	Thumb Screw Assembly	-	1	1	1	1	1
12-20214	3	Washer, thumb screw	1	1	1	1	1	1
1409-427A3	5	Swivel Bracket Assembly	1	1	1	1	1	-
1409-1496A1	5	Swivel Bracket Assembly	-	-	-	-	-	1
23-22701	6	Bushing, co-pilot ring	1	1	1	1	1	1
23-22704	7	Shell, upper co-pilot bushing	1	1	1	1	1	1
22705	8	Ring, upper co-pilot bushing	1	1	1	1	1	1
23-22706	9	Shell, lower co-pilot bushing	1	1	1	1	1	1
22707	10	Ring, lower co-pilot bushing	1	1	1	1	1	1
22709A2	11	Shoe Latch and Lever Assembly	1	1	1	1	1	-
28741A1	11	Shoe Latch and Lever Assembly	-	-	-	-	-	1
17-22515	12	Pin, roll	1	1	1	1	1	1
24-22711	13	Spring, tilt lock	1	1	1	1	1	1
22686	14	Rod, tie	1	1	1	1	1	1
10-20482	15	Screw, tie rod	2	2	2	2	2	-
10-28715	15	Screw, tie rod	-	-	-	-	-	2
13-26992	16	Lockwasher, tie rod screw	2	2	2	2	2	-
16-22687	17	Stud, tie	1	1	1	1	1	1
15-28835	--	Shim, clamp bracket to swivel bracket	-	-	-	-	-	2
11-22688	18	Nut, tie stud (left hand thread)	1	1	1	1	1	1
11-22046	19	Nut, tie stud (right hand thread)	1	1	1	1	1	1
22699	20	Plate, cover	1	1	1	1	1	1
17-22700	21	Pin, swivel bracket to clamp bracket pivot	1	1	1	1	1	1
54-22969	22	Tab, safety chain and bottle opener	1	1	1	1	1	1
10-20401	23	Screw, safety chain tab to swivel bracket	2	2	2	2	2	-
10-28716	23	Screw, safety chain tab to swivel bracket	-	-	-	-	-	2
13-26996	24	Lockwasher, safety chain tab screw	2	2	2	2	2	-
38-24830	25	Serial Plate	1	1	1	1	1	-
38-28781	25	Serial Plate	-	-	-	-	-	1
10-20314	26	Screw, drive - serial plate to swivel bracket	2	2	2	2	2	2

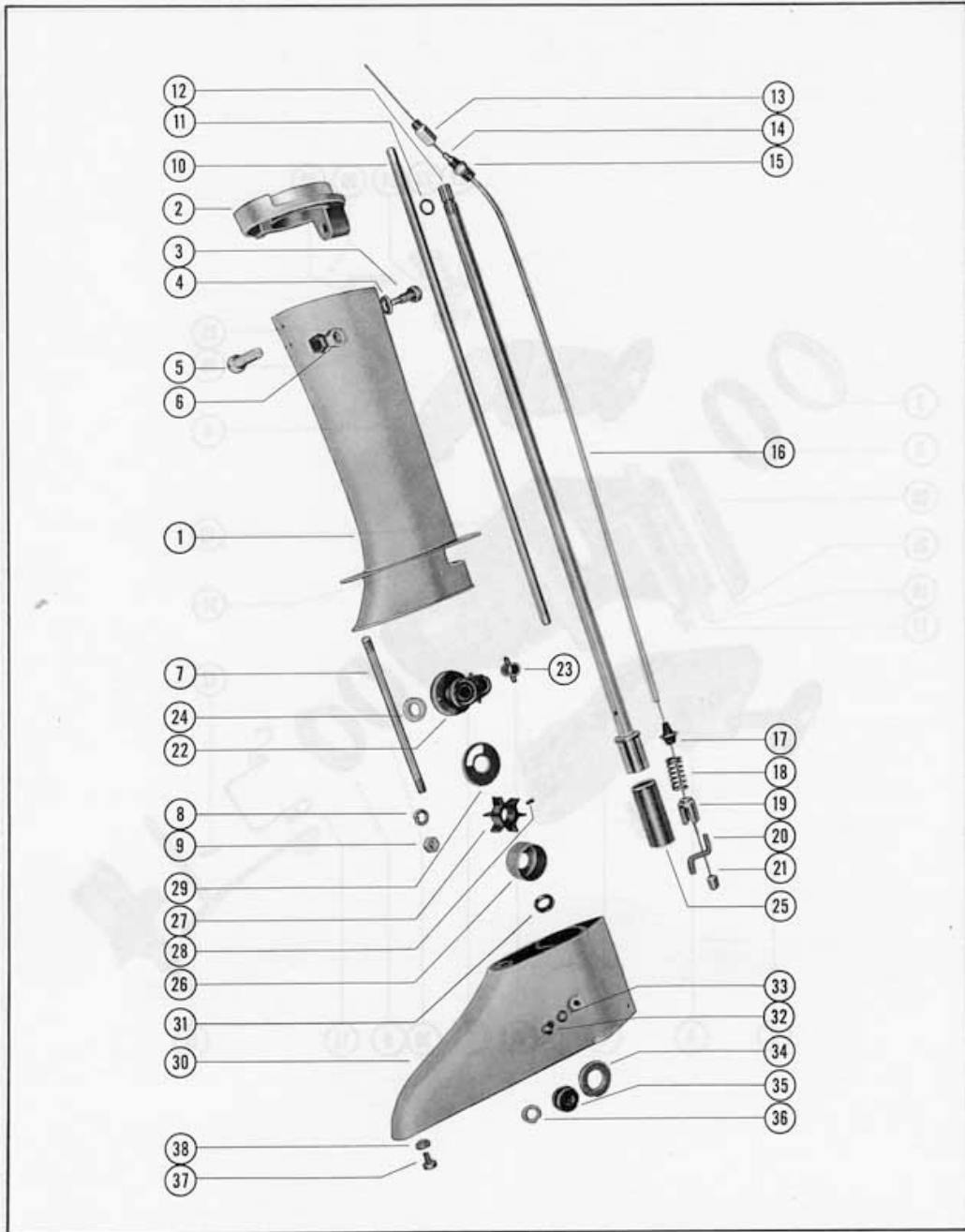
CLAMP AND SWIVEL BRACKET ASSEMBLY



DRIVE SHAFT HOUSING

PART NO.	REF. NO.	DESCRIPTION	MK6	MK6 -1	MK6 -2	MK6 -3	MK6 -4	MK6A
A-1508-394	1	Drive Shaft Housing, upper	1	1	1	1	1	1
A-22752	2	Top, drive shaft housing	1	1	1	1	1	1
A-10-22729	3	Screw, drive shaft housing top	1	1	1	1	1	1
C-13-20202	4	Lockwasher, drive shaft housing top screw	1	1	1	1	1	1
C-10-22730	5	Screw, clamping	1	1	1	1	1	1
C-11-22053	6	Nut, clamping screw	1	1	1	1	1	1
A-16-22731	7	Stud, drive shaft housing to gear housing	1	1	1	1	1	1
C-13-26992	8	Lockwasher, drive shaft housing stud	1	1	1	1	1	1
C-11-21825	9	Nut, drive shaft housing stud	1	1	1	1	1	-
C-11-20184	9	Nut, drive shaft housing stud	-	-	-	-	-	1
A-32-22732	10	Pipe, water inlet	1	1	1	1	1	1
C-25-21720	11	"O" Ring, upper drive shaft	1	1	1	1	1	1
A-45-22737A1	12	Drive Shaft Assembly, upper	1	1	1	1	1	1
A-22-22586	13	Connector, upper guide tube	1	1	1	1	1	1
A-22732	14	Sleeve, compression	1	1	1	1	1	1
A-22-22644	15	Connector, lower guide tube to crankcase	1	1	1	1	1	1
A-32-22584A1	16	Tube Assembly, control cable guide	1	1	1	1	1	1
A-22749	17	Cone Seal	1	1	1	1	1	1
A-24-22754	18	Spring, trip finger	1	1	1	1	1	1
A-22744	19	Housing, trip finger	1	1	1	1	1	1
A-22745	20	Finger, trip	1	1	1	1	1	1
A-22750	21	Cable, control	1	1	1	1	1	1
A-22733A1	22	Pilot Cap Assembly	1	1	1	1	1	1
A-23-22583	23	Bushing, pilot cap	1	1	1	1	1	1
A-26-22734	24	Oil Seal, pilot cap	1	1	1	1	1	1
A-24-22763	25	Spring, clutch	1	1	1	1	1	1
A-46-22741	26	Housing, water pump	1	1	1	1	1	1
A-47-22748	27	Impeller, water pump	1	1	1	1	1	1
C-17-22060	28	Pin, impeller drive	1	1	1	1	1	1
A-22743	29	Cover, water pump housing	1	1	1	1	1	1
A-1509-395A2	30	Drive Shaft Housing Assembly, lower	1	1	1	1	1	1
A-26-30913	31	Oil Seal, lower drive shaft housing	1	1	1	1	1	1
C-10-28653	32	Screw, vent	1	1	1	1	1	1
C-12-20262	33	Washer, vent screw	1	1	1	1	1	1
C-12-22739	34	Washer, thrust	1	1	1	1	1	1
A-22747	35	Plug, trip finger chamber	1	1	1	1	1	1
C-25-20034	36	"O" Ring, trip finger chamber plug	1	1	1	1	1	1
C-10-28713	37	Screw, anti-cavitation plate	1	1	1	1	1	1
C-13-22773	38	Lockwasher, anti-cavitation plate	1	1	1	1	1	-

DRIVE SHAFT HOUSING



GEAR HOUSING ASSEMBLY

PART NO.	REF. NO.	DESCRIPTION	MKG	MKG -1	MKG -2	MKG -3	MKG -4	MKG A
A-1607-396A7	-	Gear Housing Assembly, Complete (less propeller)	1	-	-	-	-	-
A-1607-400A3	-	Gear Housing Assembly, Complete (less propeller)	-	1	1	1	1	1
A-1607-400A2	1	Gear Housing Assembly	1	1	1	1	1	1
A-31-22755	-	Roller Bearing, propeller shaft	1	1	1	1	1	1
A-31-22756	-	Roller Bearing, drive shaft	1	1	1	1	1	1
A-23-23756	-	Spacer, ball bearing to gear housing	1	-	-	-	-	-
A-45-22758	2	Drive Shaft	1	1	1	1	1	1
A-30-25124	3	Ball Bearing, drive shaft	1	1	1	1	1	1
A-52-22760	4	Clutch Drum	1	1	1	1	1	1
A-15-22759A1	5	Shim, ball bearing to gear housing (.002-3-5)	AR	AR	AR	AR	AR	AR
A-23-22761	6	Spacer, ball bearing to drive shaft	1	1	1	1	1	1
C-25-22762	7	"O" Ring, gear housing seal	1	1	1	1	1	1
A-43-24969A1	8 & 12	Gear Assembly, pinion and propeller	1	1	1	1	1	1
C-13-22764	9	Lockwasher, pinion gear screw	1	1	1	1	1	1
C-10-21874	10	Screw, pinion gear to drive shaft	1	1	1	1	1	1
A-44-24463	11	Propeller Shaft	1	1	1	1	1	1
C-17-22410	13	Pin, propeller gear to propeller shaft	1	1	1	1	1	1
A-23-23926	--	Spacer, ball bearing to propeller gear	1	-	-	-	-	-
A-15-22765A1	14	Shim, ball bearing to propeller gear (.003-5-7)	AR	AR	AR	AR	AR	AR
A-15-22369A1	15	Shim, ball bearing to gear housing (.002-3-5-10)	AR	AR	AR	AR	AR	AR
A-30-21776	16	Ball Bearing, propeller shaft	1	-	-	-	-	-
A-30-22351	16	Ball Bearing, propeller shaft	-	1	1	1	1	1
C-53-22368	17	Ring, snap - ball bearing to propeller shaft	1	1	1	1	1	1
C-12-22768	18	Washer, sealing - water intake housing	1	1	1	1	1	1
A-22769A1	19	Water Intake Housing Assembly	1	1	1	1	1	1
A-26-22058	20	Oil Seal, water intake housing	1	1	1	1	1	1
C-25-20812	21	Washer, water intake housing	1	1	1	1	1	1
A-22771	22	Cover, gear housing	1	1	1	1	1	1
C-10-22066	23	Screw, grease filler hole	1	1	1	1	1	-
C-10-28634	23	Screw, grease filler hole	-	-	-	-	-	1
C-12-20260	24	Washer, grease filler hole screw	1	1	1	1	1	1
A-16-22772	25	Stud, gear housing to drive shaft housing	1	1	1	1	1	1
C-14-20747	26	Tab Washer, gear housing stud	1	1	1	1	1	-
C-11-20083	27	Nut, gear housing stud	1	1	1	1	1	-
C-11-25594	27	Nut, gear housing stud	-	-	-	-	-	1
A-48-25774	28	Propeller	1	1	1	1	1	1
A-52-24455	29	Plate, clutch thrust	1	1	1	1	1	1
A-24464	30	Disc, friction (propeller shaft)	8	8	8	8	8	8
A-24465	31	Disc, friction (propeller hub)	8	8	8	8	8	8
A-24-24458	32	Spring, compression	1	1	1	1	1	1
A-15-23544A1	--	Shim, propeller clutch (.015-31)	AR	AR	AR	AR	AR	AR
A-14-24461	33	Tab Washer, propeller nut	1	1	1	1	1	1
A-11-24462	34	Nut, propeller	1	1	1	1	1	1

GEAR HOUSING ASSEMBLY

