

SERIAL NUMBERS:

Mark 35AM	1217222 thru 1262984
Mark 35AE	1218472 thru 1266884
Merc 300M	1275385 thru 1353947
Merc 300E	1271885 thru 1356947
Merc 350M and Merc 350E	1445139 and below
Merc 350M-1	1445140 thru 1448139

INDEX:

	<u>Page</u>
Bottom Cowl Assembly	21
Carburetor Assembly	12
Carburetor Linkage and Choke Solenoid	13
Clamp and Swivel Bracket	24
Cowling and Front Cover	3
Crankshaft, Piston and Connecting Rod	20
Cylinder Block and Crankcase Assembly	17
Drive Shaft Housing Assembly	23
Flywheel Assembly and Stator	3
Fuel Pump Assembly	16
Fuel Tank Assembly	27
Gear Housing Assembly	28 and 29
Magneto Adaptor and Pilot Assembly	6 and 7
Magneto Assembly (Internal Parts)	9
Propellers	31
Rectifier, Starter Solenoid and Wiring Harness	31
Remote Control Cable Assembly	31
Remote Control Assembly (Electric)	31
Remote Control Assembly (Standard)	31
Starter Motor Assembly (Delco-Remy)	31
Top Cowl and Starter Assembly	2

(See Page 25 for Mark 35AS Parts List.)

(See Page 25 for Merc 300S Parts List.)

(See Page 25 for Merc 350S Parts List.)

■ Contents of A-27-26998A1 Gasket Set

ACCESSORIES

Battery	C-35190
Battery Box Assembly	C-91-32144
Decal Solution (Pint Bottle)	C-91-25143-1
Gasket Set	A-27-26998A1
Flushing Assembly	C-24789A1
Gear Lubricant	C-92-29409-12
Glue (Blanket Adhesive)	C-92-25234-1
Shipping Carton (Fuel Tank)	A-94-29616
Mark 35A, Merc 300, Merc 350 Parts List	C-90-45772

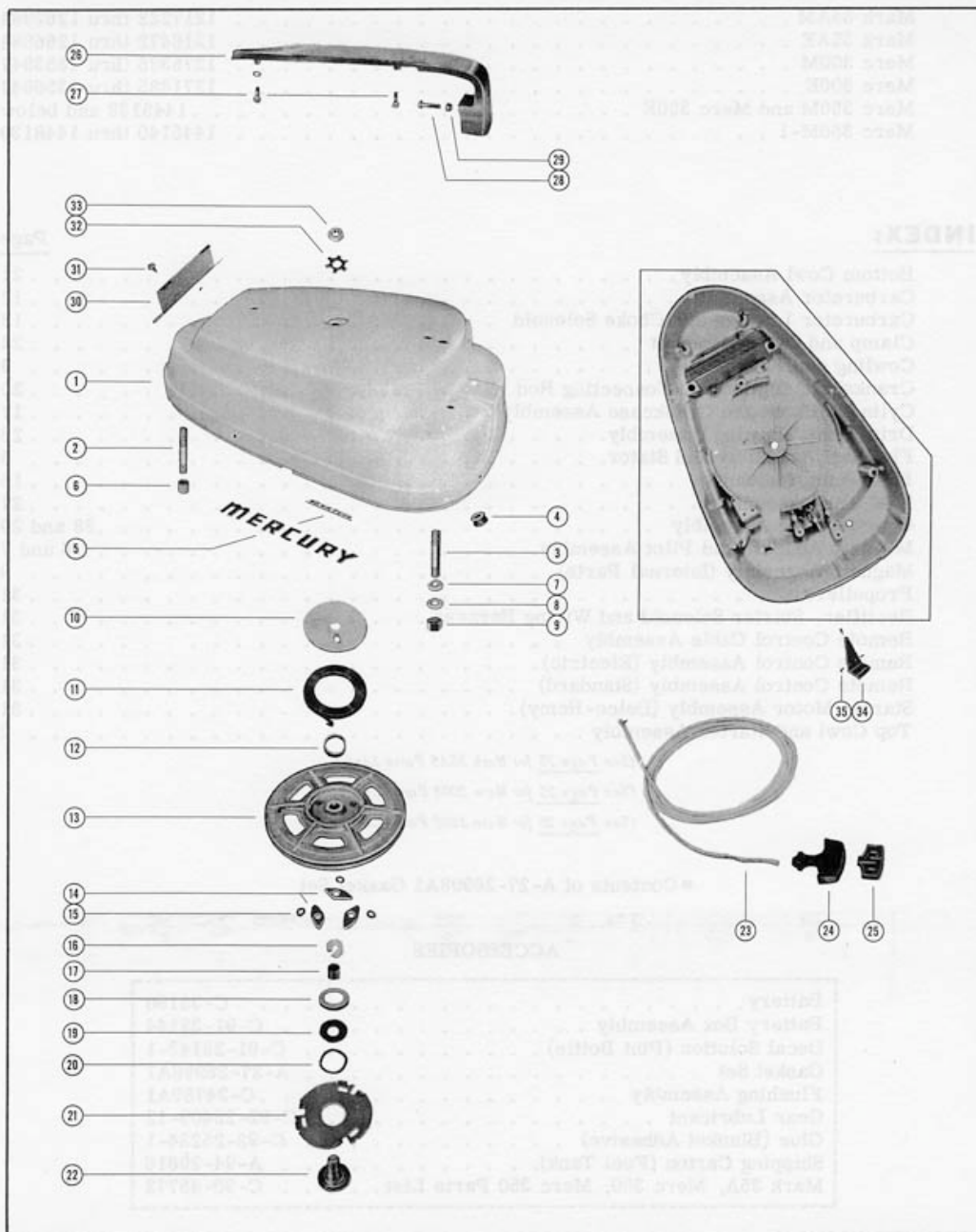
TOP COWL AND STARTER ASSEMBLY

PART NO.	REF. NO.	DESCRIPTION	MARK 35AM	MARK 35AE	MERC 300M	MERC 300E	MERC 350M	MERC 350E	MERC 350M-1
A-177-1600A2	1	Top Cowl Assembly	1	1	1	1	1	1	1
C-16-20500	2	Stud, rear - top cowl to cover	2	2	2	2	2	2	2
C-16-20353	3	Stud, front - top cowl to crankcase	2	2	2	2	2	2	2
C-25-20116	4	Grommet, choke knob	1	1	1	1	1	1	1
A-37-28988A1	5	Decal Set, top cowl (colored engines) - not as shown	1	1	-	-	-	-	-
A-37-28989A1	5	Decal Set, top cowl (white engines) - not as shown	1	1	-	-	-	-	-
A-37-29834A1	5	Decal Set, top cowl (not as shown)	-	-	1	1	-	-	-
A-37-31121A1	5	Decal Set, top cowl	-	-	-	-	1	1	1
C-23-20326	6	Spacer, top cowl stud	2	2	2	2	2	2	2
C-12-20346	7	Washer, top cowl stud (3/4" O.D.)	4	4	4	4	4	4	4
C-12-20028	8	Washer, top cowl stud (1/16" thick)	4	4	4	4	4	4	4
C-12-20583	8	Washer, top cowl stud (1/32" thick)	4	4	4	4	4	4	4
C-11-20361	9	Nut, top cowl fastening	4	4	4	4	4	4	4
A-20155	10	Retainer, starter spring	1	1	1	1	1	1	1
A-24-29340A1	11	Spring, starter rewind	1	1	1	1	1	1	1
A-23-28912	12	Bushing, spring guide	1	1	1	1	1	1	1
A-50-28908	13	Sheave Assembly	1	1	1	1	1	1	-
A-50-30994	13	Sheave Assembly	-	-	-	-	-	-	1
A-20162	14	Pawl, starter	3	3	3	3	3	3	-
A-30596	14	Pawl, starter	-	-	-	-	-	-	3
C-13-29402	15	Washer, wave - starter pawl	3	3	3	3	3	3	-
C-13-30597	15	Washer, wave - starter pawl	-	-	-	-	-	-	3
A-23-28919	16	Bushing, nylon - sheave shaft spacer	1	1	1	1	1	1	1
A-23-28911	17	Spacer, sheave shaft	1	1	1	1	1	1	1
A-26179	18	Retainer, wave washer	1	1	1	1	1	1	1
C-12-26180	19	Washer, wave washer retainer	1	1	1	1	1	1	1
C-13-20160	20	Washer, wave - retainer tension	1	1	1	1	1	1	1
A-20164	21	Plate, retainer starter pawl	1	1	1	1	1	1	-
A-30595	21	Plate, retainer starter pawl	-	-	-	-	-	-	1
A-28913	22	Shaft, sheave	1	1	1	1	1	1	1
A-50-28985A1	23	Starter Cable Assembly	1	1	1	1	1	1	1
A-28747	24	Handle, starter cable	1	1	1	1	1	1	1
A-28748	25	Retainer, starter cable and handle	1	1	1	1	1	1	1
A-28944	26	Handle, top cowl	1	1	1	1	1	1	1
C-10-29199	27	Screw, handle to top cowl	-	-	2	2	2	2	2
C-10-28667	27	Screw, handle to top cowl	2	2	-	-	-	-	-
C-13-26992	--	Lockwasher, handle fastening screw	2	2	-	-	-	-	-
C-10-22421	28	Screw, handle to top cowl	1	1	1	1	1	1	1
C-11-20361	29	Nut, handle fastening screw	1	1	1	1	1	1	1
A-28967	30	Screen, vent - top cowl	1	1	1	1	1	1	1
C-11-28968	--	Nut, speed - vent screen to top cowl	4	4	-	-	-	-	-
C-10-29221	31	Screw, vent screen to top cowl	4	4	4	4	4	4	4
C-14-20165	32	Tab Washer, sheave shaft nut	1	1	1	1	1	1	1
C-11-20166	33	Nut, sheave shaft (left hand thread)	1	1	1	1	1	1	1
A-30045	34	Plate, rope guide (see note #2 below)	-	-	1	1	1	1	1
C-10-28642	35	Screw, drive - rope guide plate to top cowl	-	-	3	3	3	3	3

NOTE #1: On later engines the speed nut bosses used to fasten vent screen to top cowl have been removed. In their place, self tapping screws are now used. Order and replace parts accordingly.

NOTE #2: The A-30045 rope guide plate, used on later engines, can only be installed where holes are provided in top cowl for mounting.

TOP COWL AND STARTER ASSEMBLY



COWLING AND FRONT COVER

PART NO.	REF. NO.	DESCRIPTION	MARK	35AM	MARK	35AE	MERC	300M	MERC	300E	MERC	350M	MERC	350E	MERC	350M-1
			35AM	35AE	MERC	300M	MERC	300E	MERC	350M	MERC	350E	MERC	350M-1		
A-175-1562A1	1	Cowl Front Cover Assembly	1	1	-	-	-	-	-	-	-	-	-	-	-	-
A-175-1641A1	1	Cowl Front Cover Assembly	-	-	1	1	-	-	-	-	-	-	-	-	-	-
A-175-1856A1	1	Cowl Front Cover Assembly	-	-	-	-	-	-	-	-	-	1	1	1	1	1
C-26183A	2	Emblem, front cover (see note below)	1	1	1	1	1	1	1	1	1	1	1	1	1	1
A-10-29552	3	Screw, cover fastening	1	1	1	1	1	1	1	1	1	1	1	1	1	1
C-12-26162	4	Washer, cover fastening screw	1	1	1	1	1	1	1	1	1	1	1	1	1	1
C-12-27897	5	Washer, cover fastening screw	1	1	1	1	1	1	1	1	1	1	1	1	1	1
A-20721	6	Bumper, rubber - front cover (small)	4	4	4	4	4	4	4	4	4	4	4	4	4	4
A-26901	7	Bumper, rubber - front cover (large)	2	2	2	2	2	2	2	2	2	2	2	2	2	2
A-28999	8	Blanket, sound absorbing - front cover	1	1	1	1	1	1	1	1	1	1	1	1	1	1
C-12-29000	9	Washer, blanket to front cover	2	2	2	2	2	2	2	2	2	2	2	2	2	2
C-11-28968	10	Nut, speed - sound blanket fastening	1	1	1	1	1	1	1	1	1	1	1	1	1	1
A-107-1015A3	11	Wrap Around Cowl Assembly	1	1	-	-	-	-	-	-	-	-	-	-	-	-
A-180-1642A2	11	Wrap Around Cowl Assembly	-	-	-	-	-	-	-	-	-	-	-	-	-	-
A-190-1819A2	11	Wrap Around Cowl Assembly	-	-	-	-	-	-	-	-	-	-	-	-	-	-
C-21060	12	Handle, cowl latch	2	2	2	2	2	2	2	2	2	2	2	2	2	2
C-53-21058	13	"E" Ring, cowl latch hinge pin	4	4	4	4	4	4	4	4	4	4	4	4	4	4
A-17-21057	14	Pin, hinge - cowl latch handle	4	4	4	4	4	4	4	4	4	4	4	4	4	4
A-25690	15	Swivel, cowl latch	2	2	2	2	2	2	2	2	2	2	2	2	2	2
A-25691	16	Hook, cowl latch fastening	2	2	2	2	2	2	2	2	2	2	2	2	2	2
A-24825	17	Blanket, wrap around cowl	1	1	1	1	1	1	1	1	1	1	1	1	1	1
C-92-25234-1	--	Glue, adhesive - blanket fastening	1	1	1	1	1	1	1	1	1	1	1	1	1	1
C-92-27109-1	--	Adhesive Compound (3 1/2 ounce kit) emblem fastening	-	-	-	-	-	-	-	-	-	-	-	-	-	-

NOTE: Emblems for replacement may be ordered in two (2) different color combinations as listed below. Be sure to specify color combination required by adding A1 or A5 suffix to emblem, part number C-26183A.

C-26183A1 Emblem (black background with red and aluminum lettering)
 C-26183A5 Emblem (aluminum background with red and gold lettering)
 C-92-27109 Adhesive Compound (3 1/2 ounce kit) emblem fastening

FLYWHEEL ASSEMBLY AND STATOR

PART NO.	REF. NO.	DESCRIPTION	MARK	35AM	MARK	35AE	MERC	300M	MERC	300E	MERC	350M	MERC	350E	MERC	350M-1
			35AM	35AE	MERC	300M	MERC	300E	MERC	350M	MERC	350E	MERC	350M-1		
C-11-22339	1	Nut, flywheel	1	1	1	1	1	1	1	1	1	1	1	1	1	1
C-12-26617	2	Washer, flywheel nut	1	1	1	1	1	1	1	1	1	1	1	1	1	1
A-28-20094	3	Key, flywheel	1	1	1	1	1	1	1	1	1	1	1	1	1	1
A-208-1535A1	4	Flywheel Assembly (lug height 15/32")	1	-	-	-	-	-	-	-	-	-	-	-	-	-
A-208-1385A1	4	Flywheel Assembly (lug height 11/32")	1	-	1	-	-	-	-	-	-	-	-	-	-	-
A-211-1414A4	4	Flywheel Assembly (with spacers)	-	-	#1	-	-	-	-	-	-	-	-	-	-	-
A-211-1414A2	4	Flywheel Assembly (without spacers)	-	-	#1	-	-	-	-	-	-	-	-	-	-	-
A-211-1414A7	4	Flywheel Assembly (without spacers)	-	-	+1	-	-	-	-	-	-	-	-	-	-	-
A-22823	5	Pulley, flywheel	1	1	1	1	1	1	1	1	1	1	1	1	1	1
C-12-25293	6	Washer, pulley to flywheel	1	1	1	1	1	1	1	1	1	1	1	1	1	1
A-29788	-	Flange, flywheel pulley	-	-	-	-	-	-	-	-	-	-	-	-	-	-
A-30306	-	Pulley, flywheel	-	-	-	-	-	-	-	-	-	-	-	-	-	-
A-29787	-	Hub, flange - flywheel pulley	-	-	-	-	-	-	-	-	-	-	-	-	-	-
C-17-26618	7	Dowel Pin, flywheel pulley	1	1	1	1	1	1	1	1	1	1	1	1	1	1
C-12-28927	-	Washer, ratchet to flywheel (1/8" spacer)	-	-	3	-	-	-	-	-	-	-	-	-	-	-
A-50-25263	8	Ratchet, flywheel	-	-	1	-	-	-	-	-	-	-	-	-	-	-
C-10-29238	9	Screw, ratchet to flywheel	-	-	3	-	-	-	-	-	-	-	-	-	-	-
A-398-1455	10	Stator, alternator - flywheel	-	-	1	-	-	-	-	-	-	-	-	-	-	-
C-22647	11	Disconnect, knife splice - stator lead wire	-	-	2	-	-	-	-	-	-	-	-	-	-	-
A-32-26528	12	Sleeve, rubber - stator lead wire	-	-	2	-	-	-	-	-	-	-	-	-	-	-
C-10-29249	13	Screw, stator to upper end cap	-	-	4	-	-	-	-	-	-	-	-	-	-	-
C-54-24836	14	Clip, stator lead to crankcase flange	-	-	1	-	-	-	-	-	-	-	-	-	-	-
C-10-25255	15	Screw, stator lead clip fastening	-	-	1	-	-	-	-	-	-	-	-	-	-	-
C-10-30009	15	Screw, stator lead clip fastening	-	-	-	-	-	-	-	-	-	-	-	-	-	-

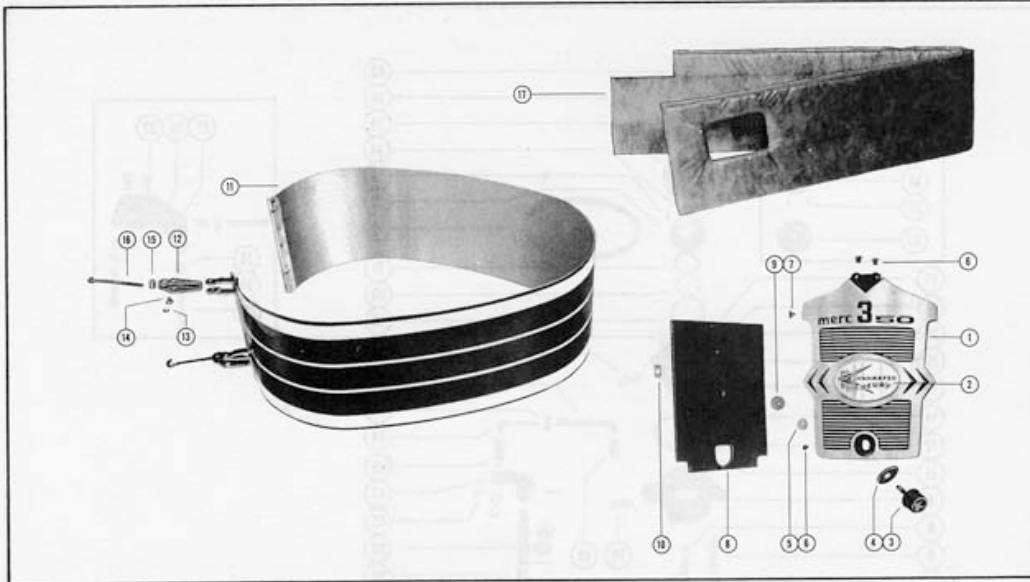
Use with A-25942 Starter Motor Assembly

+ Use with A-50-29105 Starter Motor Assembly

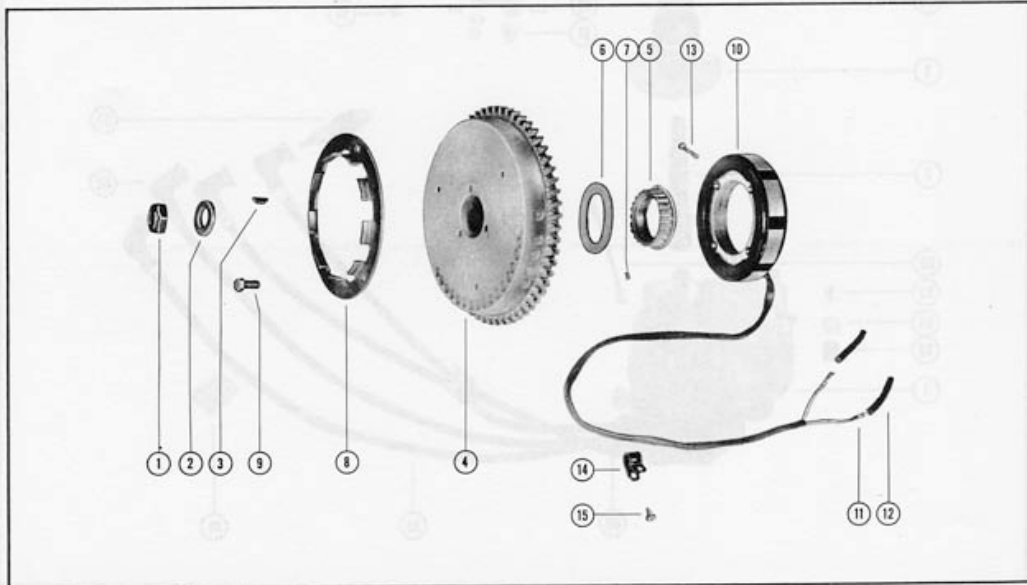
NOTE #1: Whenever replacement of a top cowl is required on early production of Mark 35AE engines, loosen (3) screws holding ratchet. Starter sheave bosses on later top cowls have been lowered to compensate for removal of these spacers. Replace ratchet screws with (3) C-10-29238 screws (3/8" long). Also check lug height whenever flywheel is replaced on Mark 35AM engines. Early production had lugs 15/32" high and later production lugs are 11/32" high. When A-177-1600A2 Top Cowl Assembly is used for replacement, A-208-1385A1 Flywheel Assembly must be used.

NOTE #2: On later production engines, the A-22823 pulley and C-12-25293 washer were replaced by a new 3 piece pulley for the flywheel. This new 3 piece combination can only be used on flywheels which have the 3/32" longer hub length required for new style pulley. Please adjust your ordering of replacement parts accordingly.

Y JIM COWLING AND FRONT COVER



FLYWHEEL ASSEMBLY AND STATOR



Revised March 1966

(MARK 35A, MERC 300, MERC 350)

Page 4

MAGNETO ADAPTOR AND PILOT ASSEMBLY

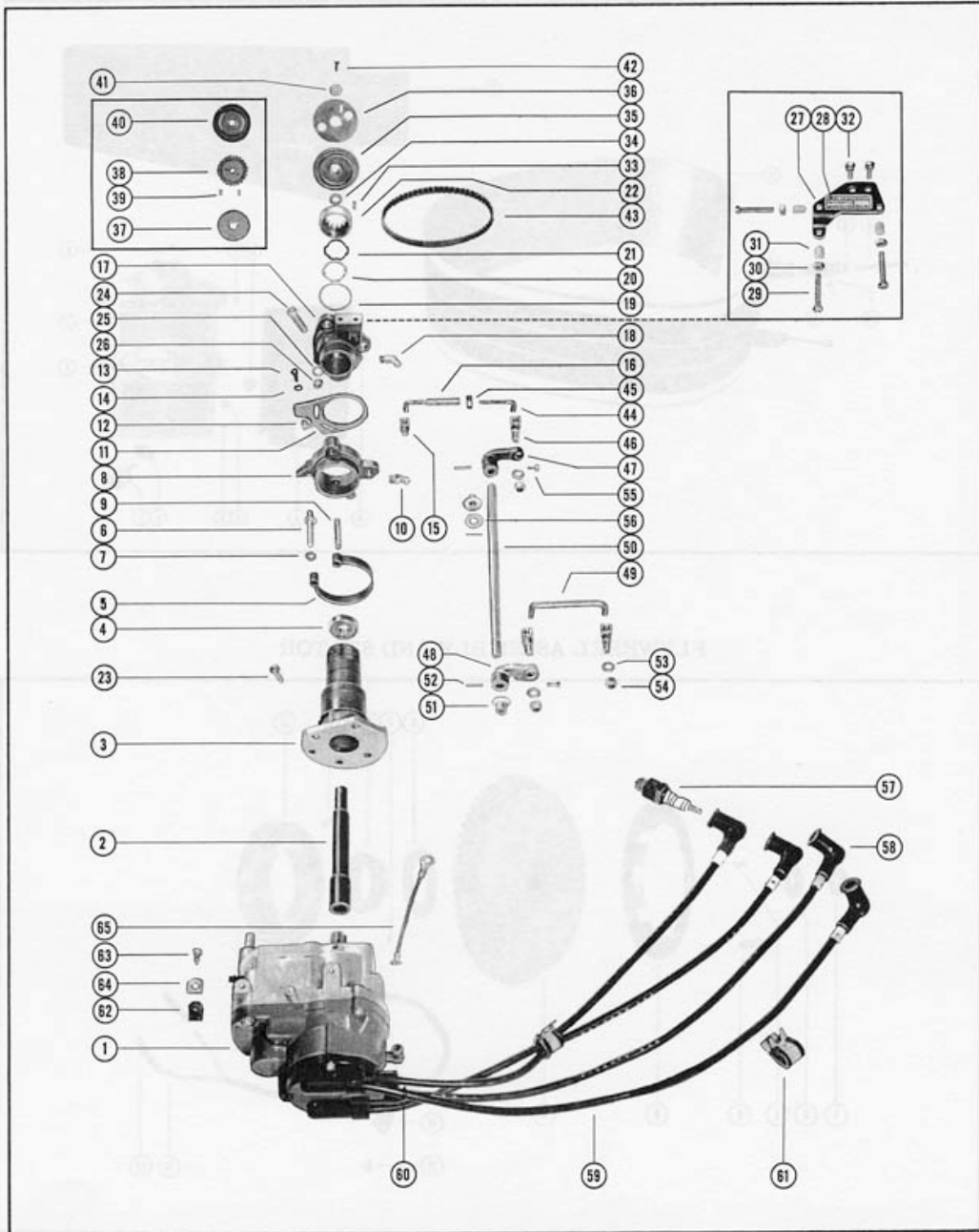
PART NO.	REF. NO.	DESCRIPTION	MARK 35AM	MARK 35AE	MERC 300M	MERC 300E	MERC 350M	MERC 350E	MERC 350M-1
A-394-2271A2	1	Magneto Assembly, Complete	1	1	1	1	1	1	1
A-45-27951	2	Shaft, magneto drive	1	1	1	1	1	1	1
A-27953A3	-	#Magneto Adaptor and Pilot Assembly, Complete	1	1	-	-	-	-	-
A-29321A5	-	+Magneto Adaptor and Pilot Assembly, Complete	1	1	-	-	-	-	-
A-29321A3	-	Magneto Adaptor and Pilot Assembly, Complete	-	-	1	1	1	1	1
A-27953A1	3	#Magneto Pilot Assembly	1	1	-	-	-	-	-
A-29321A1	3	+Magneto Pilot Assembly	1	1	1	1	1	1	1
A-30-20066	4	Bearing, ball - magneto pilot	1	1	1	1	1	1	1
A-24-27944	5	Spring, horseshoe - magneto pilot	1	1	1	1	1	1	1
C-17-27962	6	Pin, anchor - horseshoe spring to pilot	1	1	1	1	1	1	1
C-12-29245	7	Washer, horseshoe spring to anchor pin	1	1	1	1	1	1	1
A-27946A1	8	Economizer Collar and Pin Assembly	1	1	1	1	1	1	1
C-17-27961	9	Pin, economizer collar - spring retainer	1	1	1	1	1	1	1
C-22-25094	10	Fitting, grease - economizer collar	1	1	1	1	1	1	1
A-27945A1	11	#Throttle Actuator Assembly	1	1	-	-	-	-	-
A-29252A1	11	+Throttle Actuator Assembly	1	1	-	-	-	-	-
A-29557A1	11	Throttle Actuator Assembly	-	-	1	1	1	1	1
A-23-26602	12	Bushing, nylon - throttle actuator	2	2	1	1	1	1	1
C-10-20665	13	Screw, throttle actuator to economizer collar	2	2	2	2	2	2	2
C-12-20128	14	Washer, throttle actuator screw	2	2	2	2	2	2	2
C-27947	15	Swivel, linkage - economizer collar	1	1	1	1	1	1	1
C-25996A1	16	Swivel and Link Rod Assembly	1	1	1	1	1	1	1
A-30043	17	Adaptor, magneto	1	1	1	1	1	1	1
C-22-25094	18	Fitting, grease - magneto adaptor	1	1	1	1	1	1	1
C-12-27939	19	Washer, magneto pilot	1	1	1	1	1	1	1
C-14-27960	20	Tab Washer, adaptor cap fastening	1	1	1	1	1	1	1
C-13-27959	21	Washer, wave - magneto ball bearing tension	1	1	1	1	1	1	1
A-27955	22	Cap, magneto adaptor and pilot fastening	1	1	1	1	1	1	1
C-10-28063	23	Screw, adaptor and pilot to mangeto	4	4	4	4	-	-	-
C-10-30110	23	Screw, adaptor and pilot to mangeto	-	-	-	-	4	4	4
C-13-26992	--	Lockwasher, adaptor and pilot fastening screw	4	4	4	4	-	-	-
C-10-22040	24	Screw, adaptor and pilot to crankcase	3	3	3	3	3	3	3
C-12-20084	25	Washer, adaptor and pilot to crankcase screw	3	3	3	3	3	3	3
C-11-20083	26	Nut, adaptor and pilot to crankcase screw	3	3	3	3	3	3	3
A-27943	27	#Plate, throttle stop	1	1	-	-	-	-	-
A-29277	27	+Plate, throttle stop	1	1	1	1	1	1	1
A-37-29315	28	+Decal, throttle stop plate	1	1	1	1	1	1	1
C-10-24933	29	Screw, throttle stop adjusting	3	3	3	3	3	3	3
C-11-20088	30	Nut, throttle stop adjusting screw	3	3	3	3	3	3	3
A-26852	31	Cap, nylon - adjusting screw	3	3	3	3	3	3	3
C-10-28635	--	Screw, throttle stop plate to adaptor	2	2	-	-	-	-	-
C-13-26992	--	Lockwasher, throttle stop plate fastening screw	2	2	-	-	-	-	-
C-10-29197	32	Screw, throttle stop plate to adaptor	-	-	2	2	2	2	2

Use thru Serial #1231089

+ Started with Serial #1231090

(CONTINUED ON PAGE 7.)

MAGNETO ADAPTOR AND PILOT ASSEMBLY



MAGNETO ADAPTOR AND PILOT ASSEMBLY

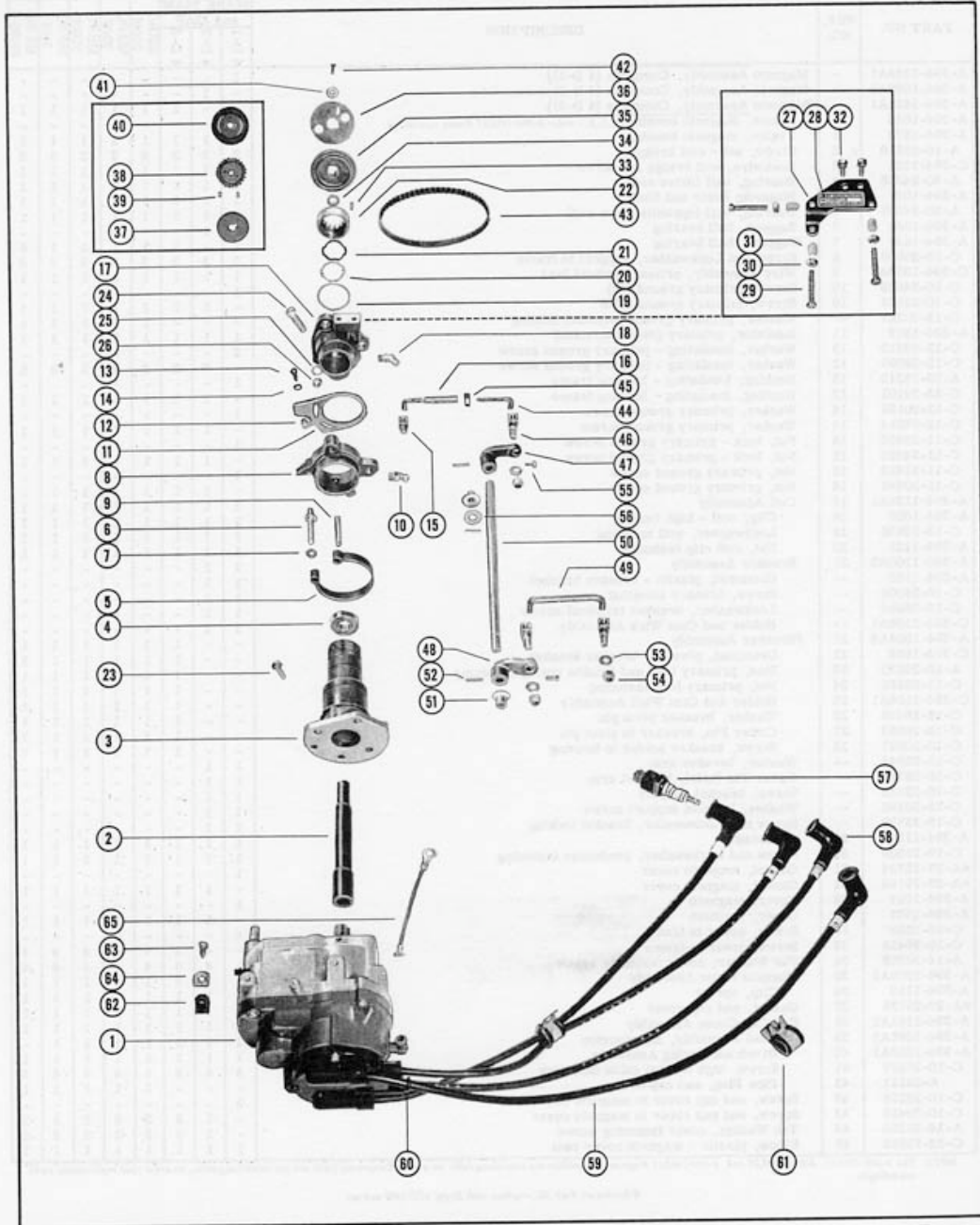
PART NO.	REF. NO.	DESCRIPTION	MARK 35AM	MARK 35AE	MERC 300M	MERC 300E	MERC 350M	MERC 350E	MERC 350M-1
A-28-28657	33	Key, magneto driving	1	1	1	1	1	1	1
A-23-27957	34	Spacer, pulley to magneto adaptor cap	1	1	1	1	1	1	-
A-24807	35	Pulley, driven	1	1	1	1	1	1	-
A-20136	36	Flange, driven pulley	1	1	1	1	1	1	-
A-29784	37	Hub, driven pulley	-	-	1	1	1	1	1
A-29783A1	38	Driven Pulley Assembly	-	-	1	1	1	1	1
C-17-24873	39	Roll Pin, flange locating	-	-	2	2	2	2	2
A-29785	40	Flange, driven pulley	-	-	1	1	1	1	1
C-12-20138	41	Washer, pulley clamping screw	1	1	1	1	1	1	1
C-13-26996	--	Lockwasher, pulley clamping screw	1	1	1	1	-	-	-
C-10-29240	42	Screw, pulley clamping	1	1	1	1	1	1	1
A-20140	43	Belt, timing	1	1	1	1	1	1	1
A-27942A1	--	#Magneto Stop Assembly	1	1	-	-	-	-	-
A-26597	--	#Bumper, rubber - magneto stop	1	1	-	-	-	-	-
C-10-28635	--	#Screw, magneto stop to pilot	2	2	-	-	-	-	-
C-12-20533	--	#Washer, magneto stop fastening screw	2	2	-	-	-	-	-
A-27949	44	Rod, link - upper	1	1	1	1	1	1	1
C-11-25168	45	Nut, upper link rod adjusting	1	1	1	1	1	1	1
C-27948	46	Swivel, upper and lower link rods	3	3	3	3	3	3	3
A-28061	47	Lever, linkage - upper	1	1	1	1	1	1	1
A-27941	48	Lever, linkage - lower	1	1	1	1	1	1	1
A-27950	49	Rod, link - lower	1	1	1	1	1	1	1
A-27940	50	Shaft, vertical	1	1	1	1	1	1	1
A-23-22981	51	Bushing, nylon - vertical shaft	2	2	2	2	2	2	2
C-17-25870	52	Roll Pin, vertical shaft and linkage levers	3	3	3	3	3	3	3
C-12-29245	53	Washer, upper and lower swivel	3	3	3	3	3	3	3
C-11-20361	54	Nut, upper and lower swivel to lever and bracket	3	3	3	3	3	3	3
C-10-25781	55	Screw, set - linkage lever	2	2	2	2	2	2	2
C-12-25866	56	Washer, vertical shaft - center	1	1	1	1	1	1	1
A-33-20127	57	Spark Plug	4	4	4	4	4	4	4
C-20119	58	Protector, spark plug	4	4	4	4	4	4	4
A-23564	59	Cable, high tension lead - spark plug	4	4	4	4	4	4	4
C-25-25429	60	"O" Ring, high tension lead cable to end cap cover	4	4	4	4	4	4	4
C-54-29425	61	Clip, high tension lead cable fastening	2	2	-	-	2	2	2
C-54-20534	61	Clip, high tension lead cable fastening	-	-	2	2	-	-	-
C-54-25231	62	Clip, mercury switch and harness leads	2	2	2	2	2	2	2
C-10-20401	63	Screw, lead clip to magneto	1	1	2	2	1	1	1
C-22789	64	"D" Washer, clip fastening screw	1	1	2	2	1	1	1
A-394-1134A1	65	Ground Strap Assembly, magneto to crankcase	1	1	1	1	1	1	1

NOTE: On later production engines, the A-24807 pulley and A-20136 flange were replaced by a new 3 piece driven pulley. This new 3 piece combination may be used as a replacement part on earlier engines if replaced as a unit. The A-23-27957 spacer is not required with these new style parts.

Use thru Serial #1231089

(CONTINUED FROM PAGE 6)

MAGNETO ADAPTOR AND PILOT ASSEMBLY



Revised March 1966

(MARK 35A, MERC 300, MERC 350)

Page 8

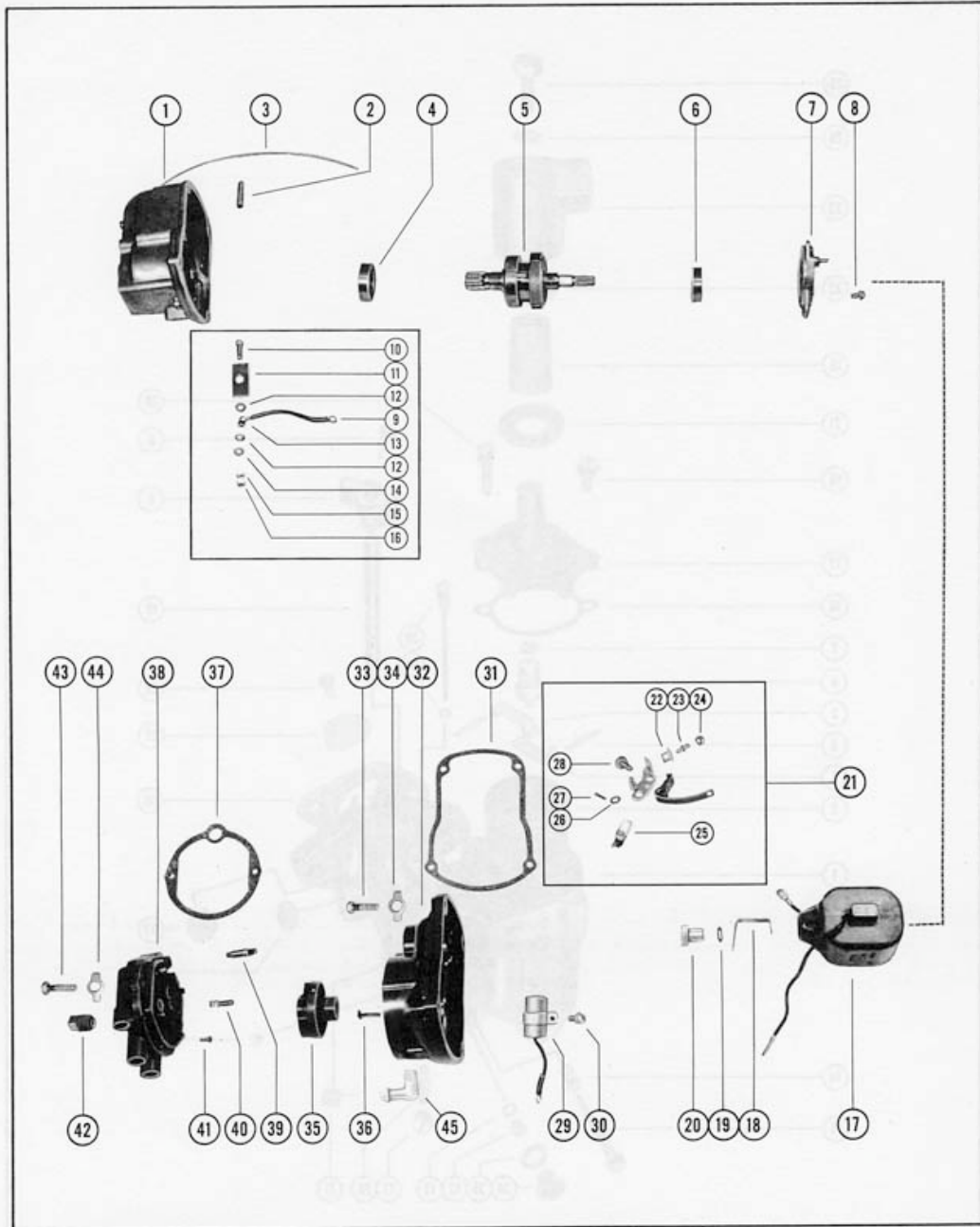
MAGNETO ASSEMBLY (INTERNAL PARTS)

PART NO.	REF. NO.	DESCRIPTION	MARK 35AM and 35AE										
			D			MERC		MERC		MERC			
			1	2	3	300M	300E	350M	350E	350M-1			
A-394-1069A1	-	Magneto Assembly, Complete (4 D-1)	1	-	-	-	-	-	-	-	-	-	-
A-394-1069A2	-	Magneto Assembly, Complete (4 D-2) <i>see note below</i>	-	1	-	-	-	-	-	-	-	-	-
A-394-1652A1	-	#Magneto Assembly, Complete (4 D-3)	-	-	1	1	1	1	1	1	1	1	1
A-394-1066	1	Frame, magneto housing (N.L.A. - order A-394-1570A1 Frame Assembly)	1	-	-	-	-	-	-	-	-	-	-
A-394-1570	1	Frame, magneto housing	-	1	1	1	1	1	1	1	1	1	1
A-10-25510	2	Screw, set - coil bridge	2	2	2	2	2	2	2	2	2	2	2
C-394-1051	3	Lockwire, coil bridge set screw	1	1	1	1	1	1	1	1	1	1	1
A-30-24998	4	Bearing, ball (drive end)	1	1	1	1	1	1	1	1	1	1	1
A-394-1067	5	Magnetic Rotor and Shaft	1	1	1	1	1	1	1	1	1	1	1
A-30-24997	6	Bearing, ball (opposite drive end)	1	1	1	1	1	1	1	1	1	1	1
A-394-1068	7	Support, ball bearing	1	1	-	-	-	-	-	-	-	-	-
A-394-1637	7	#Support, ball bearing	-	-	1	1	1	1	1	1	1	1	1
C-10-25509	8	Screw and Lockwasher, support to frame	3	3	3	3	3	3	3	3	3	3	3
C-394-1053A1	9	Wire Assembly, primary ground lead	1	1	1	1	1	1	1	1	1	1	1
C-10-24609	10	Screw, primary ground (#8)	1	-	-	-	-	-	-	-	-	-	-
C-10-29182	10	Screw, primary ground (#10)	-	1	1	1	1	1	1	1	1	1	1
C-12-30267	--	Washer, primary ground terminal holding	-	-	-	-	-	-	-	-	-	-	-
A-394-1579	11	Insulator, primary ground terminal	1	1	1	1	1	1	1	1	1	1	1
C-12-25719	12	Washer, insulating - primary ground screw	2	-	-	-	-	-	-	-	-	-	-
C-12-29099	12	Washer, insulating - primary ground screw	-	2	2	2	2	2	2	2	2	2	2
A-23-25512	13	Bushing, insulating - housing frame	1	-	-	-	-	-	-	-	-	-	-
C-23-29101	13	Bushing, insulating - housing frame	-	1	1	1	1	1	1	1	1	1	1
C-12-20192	14	Washer, primary ground screw	1	-	-	-	-	-	-	-	-	-	-
C-12-26014	14	Washer, primary ground screw	-	1	1	1	1	1	1	1	1	1	1
C-11-28656	15	Nut, lock - primary ground screw	1	-	-	-	-	-	-	-	-	-	-
C-11-24656	15	Nut, lock - primary ground screw	-	1	1	1	1	1	1	1	1	1	1
C-11-21923	16	Nut, primary ground screw	1	-	-	-	-	-	-	-	-	-	-
C-11-20645	16	Nut, primary ground screw	-	1	1	1	1	1	1	1	1	1	1
A-394-1126A1	17	Coil Assembly	1	1	1	1	1	1	1	1	1	1	1
A-394-1050	18	Clip, coil - high tension	1	1	1	1	1	1	1	1	1	1	1
C-13-23636	19	Lockwasher, coil terminal	1	1	1	1	1	1	1	1	1	1	1
A-394-1131	20	Nut, coil clip fastening	1	1	1	1	1	1	1	1	1	1	1
A-394-1100A3	21	Breaker Assembly	1	1	-	-	-	-	-	-	-	-	-
A-394-1163	--	Grommet, plastic - breaker bracket	1	1	-	-	-	-	-	-	-	-	-
C-10-26008	--	Screw, breaker terminal	1	1	-	-	-	-	-	-	-	-	-
C-13-26994	--	Lockwasher, breaker terminal screw	1	1	-	-	-	-	-	-	-	-	-
C-394-1106A1	--	Holder and Cam Wick Assembly	1	1	-	-	-	-	-	-	-	-	-
A-394-1504A6	21	#Breaker Assembly	-	-	1	1	1	1	1	1	1	1	1
C-393-1586	22	Grommet, plastic - breaker bracket	-	-	1	1	1	1	1	1	1	1	1
A-16-29230	23	Stud, primary lead and tension spring fastening	-	-	1	1	1	1	1	1	1	1	1
C-11-29236	24	Nut, primary lead fastening	-	-	1	1	1	1	1	1	1	1	1
C-394-1106A1	25	Holder and Cam Wick Assembly	-	-	1	1	1	1	1	1	1	1	1
C-12-26439	26	Washer, breaker pivot pin	-	-	1	1	1	1	1	1	1	1	1
C-18-26953	27	Cotter Pin, breaker to pivot pin	-	-	1	1	1	1	1	1	1	1	1
C-10-20597	28	Screw, breaker holder to housing	-	-	1	1	1	1	1	1	1	1	1
C-12-25944	--	Washer, breaker arm	1	1	-	-	-	-	-	-	-	-	-
C-18-25723	--	Cotter Pin (hair), bracket arm	1	1	-	-	-	-	-	-	-	-	-
C-10-22032	--	Screw, bracket support	1	1	-	-	-	-	-	-	-	-	-
C-12-20192	--	Washer, bracket support screw	1	1	-	-	-	-	-	-	-	-	-
C-10-25509	--	Screw and Lockwasher, bracket locking	1	1	-	-	-	-	-	-	-	-	-
A-394-1130	29	Condenser	1	1	1	1	1	1	1	1	1	1	1
C-10-25509	30	Screw and Lockwasher, condenser fastening	1	1	1	1	1	1	1	1	1	1	1
#A-27-25724	31	Gasket, magneto cover	1	-	-	-	-	-	-	-	-	-	-
#A-27-29166	31	Gasket, magneto cover	-	1	1	1	1	1	1	1	1	1	1
A-394-1057	32	Cover, magneto	1	-	-	-	-	-	-	-	-	-	-
A-394-1577	32	Cover, magneto	-	1	1	1	1	1	1	1	1	1	1
C-10-28257	33	Screw, cover to frame	4	-	-	-	-	-	-	-	-	-	-
C-10-29418	33	Screw, cover to frame	-	4	4	4	4	4	4	4	4	4	4
A-14-38359	34	Tab Washer, cover fastening screw	-	4	4	4	4	4	4	4	4	4	4
A-394-2602A1	35	Magneto Rotor Assembly	1	1	1	1	1	1	1	1	1	1	1
A-394-1110	36	Clip, spring	1	1	1	1	1	1	1	1	1	1	1
#A-27-25725	37	Gasket, end cap cover	1	1	1	1	1	1	1	1	1	1	1
A-394-1561A2	38	End Cap Cover Assembly	1	1	1	1	1	1	1	1	1	1	1
A-394-1065A1	39	Lead Assembly, high tension	1	1	1	1	1	1	1	1	1	1	1
A-394-1066A1	40	Brush and Spring Assembly	1	1	1	1	1	1	1	1	1	1	1
C-10-25517	41	Screw, high tension cable fastening	4	4	4	4	4	4	4	4	4	4	4
A-29121	42	Pipe Plug, end cap cover	-	-	1	1	1	1	1	1	1	1	1
C-10-28259	43	Screw, end cap cover to magneto cover	2	-	-	-	-	-	-	-	-	-	-
C-10-29418	43	Screw, end cap cover to magneto cover	-	2	2	2	2	2	2	2	2	2	2
A-14-38359	44	Tab Washer, cover fastening screw	-	2	2	2	2	2	2	2	2	2	2
C-22-25885	45	Elbow, plastic - magneto cover vent	1	1	1	1	1	1	1	1	1	1	1

NOTE: The A-394-1069A1, A-394-1069A2 and A-394-1652A1 Magneto Assemblies are interchangeable as a unit. Component parts are not interchangeable, so order your replacement parts accordingly.

#Started on Mark 35A engines with Serial #1271388 and up.

MAGNETO ASSEMBLY (INTERNAL PARTS)



Revised March 1966

(MARK 35A, MERC 300, MERC 350)

CARBURETOR ASSEMBLY

PART NO.	REF. NO.	DESCRIPTION	MAHK	MAHK	MEHC	MERC	MERC	MERC	MERC	MERC
			35AM	35AE	300M	300E	350M	350E	350M-1	
A-1326-1119	1	Carburetor Assembly, Complete (AJ-50A)	0	-	-	-	-	-	-	-
A-1326-1604	1	Carburetor Assembly, Complete (AJ-54A)	-	*	▲	-	-	-	-	-
A-1334-1701	1	Carburetor Assembly, Complete (KB-2A)	-	-	-	②	②	②	②	②
A-1399-110A1	2	Float Assembly	②	②	②	②	②	②	②	②
A-17-20853	3	Pin, float lever pinion	4	4	4	4	4	4	4	4
A-1399-102	4	Lever, float (lower)	②	②	②	②	②	②	②	②
A-1399-101	5	Lever, float (upper)	②	②	②	②	②	②	②	②
A-1399-1138	6	Inlet Needle, Seat and Gasket	②	②	②	②	②	②	②	②
A-27-25033	7	Gasket, inlet seat	②	②	②	②	②	②	②	②
C-10-20847	8	Screw, throttle stop lever	②	②	②	②	②	②	②	②
A-1399-97	9	Lever, throttle stop (see note below)	1	1	1	1	1	1	1	1
A-1399-933	10	Shaft, throttle	②	②	②	-	-	-	-	-
A-1399-1716	10	Shaft, throttle	-	-	-	②	②	②	②	②
A-24-20869	11	Spring, throttle shaft return (upper carburetor)	1	1	1	1	1	1	1	1
A-24-26890	11	Spring, throttle shaft return (lower carburetor)	1	1	1	1	1	1	1	1
A-27-20848	--	Gasket, main adjustment screw gland	②	-	-	-	-	-	-	-
A-1399-94	--	Gland, main adjustment screw	②	-	-	-	-	-	-	-
A-1399-108	--	Packing, main adjustment screw	②	-	-	-	-	-	-	-
A-11-20849	--	Nut, main adjustment screw	②	-	-	-	-	-	-	-
A-1399-932	--	Screw, main adjustment	②	-	-	-	-	-	-	-
A-1399-1655	12	Jet, main fuel (.055)	-	②	②	②	②	②	②	②
A-1399-1653	12	Jet, main fuel (.053)	-	②	②	②	②	②	②	②
A-1399-1651	12	Jet, main fuel (.051)	-	②	②	②	②	②	②	②
A-1399-1649	12	Jet, main fuel (.049)	-	②	②	②	②	②	②	②
C-27-28409	13	Gasket, main fuel jet	-	②	②	②	②	②	②	②
A-24-27160	14	Spring, idle adjustment screw	②	②	②	②	②	②	②	②
A-1399-931	15	Screw, idle adjustment	②	-	-	②	②	②	②	②
A-1399-1623	15	Screw, idle adjustment	-	②	②	-	-	-	-	-
A-1399-1713	15	Screw, idle adjustment	-	-	-	②	②	②	②	②
A-1399-99	16	Gasket, float bowl cover	②	②	②	②	②	②	②	②
A-1399-1133	17	Cover, float bowl	②	②	②	②	②	②	②	②
A-1399-1754	18	Screen, filter - not as shown	②	②	②	②	②	②	②	②
C-10-20854	19	Screw, float bowl cover (short)	②	②	②	②	②	②	②	②
C-10-25850	20	Screw, float bowl cover (long)	②	②	②	②	②	②	②	②
A-27-25851	21	Gasket, strainer cover (large)	②	②	②	②	②	②	②	②
A-27-25849	22	Gasket, strainer cover (small)	②	②	②	②	②	②	②	②
A-1399-1135	23	Cover, strainer	②	②	②	②	②	②	②	②
A-27-25848	24	Gasket, strainer cover screw	②	②	②	②	②	②	②	②
A-10-25822	25	Screw, strainer cover fastening	②	②	②	②	②	②	②	②
A-1399-1715	26	Nozzle, main	-	-	-	②	②	②	②	②
C-10-23178	27	Screw, plug - main nozzle	-	-	-	②	②	②	②	②
C-10-23035	28	Screw and Lockwasher, throttle shutter	②	②	②	②	②	②	②	②
A-1399-107	29	Shutter, throttle	②	②	②	②	②	②	②	②
A-1399-960	30	Tube, idle	②	②	②	-	-	-	-	-
A-1399-1714	30	Tube, idle	-	-	-	②	②	②	②	②
C-10-23030	--	Screw, plug - idle tube	②	②	②	-	-	-	-	-
A-27-23180	31	Gasket, idle tube	-	-	-	②	②	②	②	②
C-10-20870	32	Screw, plug - body channel	②	-	②	-	-	-	-	-
A-10-28405	32	Screw, plug - body channel	-	②	-	-	-	-	-	-
C-10-28845	32	Screw, plug - body channel	-	-	-	②	②	②	②	②
C-19-20011	33	Welch Plug, body channel	②	②	②	②	②	②	②	②
A-10-28405	34	Screw, plug - main fuel jet channel	-	-	-	②	②	②	②	②
C-27-28406	35	Gasket, body channel plug screw	-	②	②	②	②	②	②	②
A-1399-1145	--	Gasket and Packing Set (1 per carburetor)	②	②	②	-	-	-	-	-
A-1399-1717	--	Gasket and Packing Set (1 per carburetor)	-	-	-	②	②	②	②	②
A-1399-1146	--	Repair Parts Kit	②	-	-	-	-	-	-	-
A-1399-1624	--	Repair Parts Kit (1 per carburetor)	-	②	②	-	-	-	-	-
A-1399-1718	--	Repair Parts Kit (1 per carburetor)	-	-	-	②	②	②	②	②
▲A-27-20183	36	Gasket, carburetor flange	②	②	②	②	②	②	②	②
C-11-24652	37	Nut, carburetor mounting stud	4	4	4	4	4	4	4	4
A-24823A1	--	Knob Assembly, main adjustment screw	②	-	-	-	-	-	-	-
C-10-22928	--	Screw, knob fastening	②	-	-	-	-	-	-	-

NOTE: Use on lower carburetor only - replaced with A-29443 cluster (Mark models) and A-27917 cluster (Merc models) on upper carburetor.

○ Use thru Serial #1231089

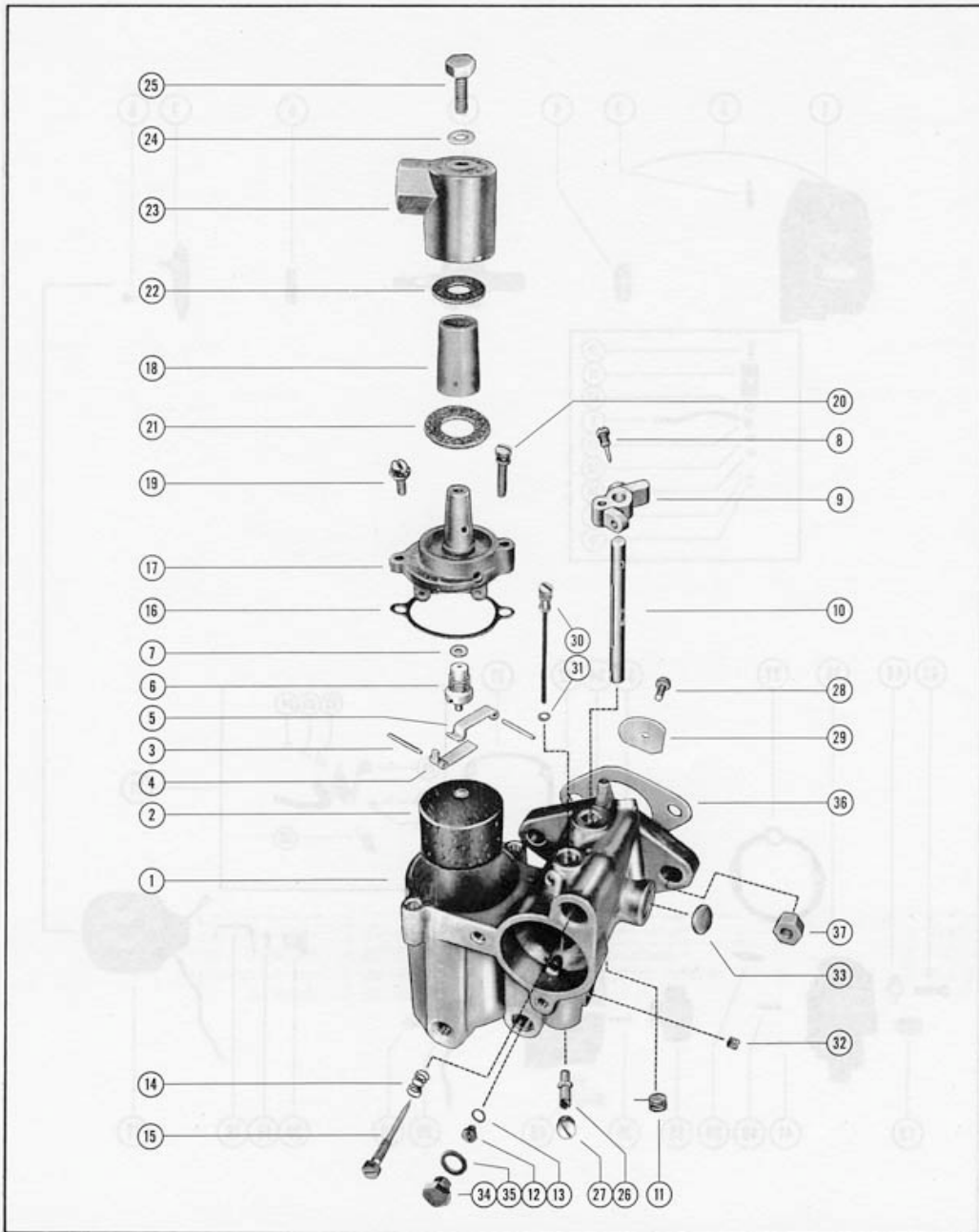
Ⓜ = Optional

* Started with Serial #1231090

▲ Use thru Serial #1324410

Started with Serial #1324411

CARBURETOR ASSEMBLY



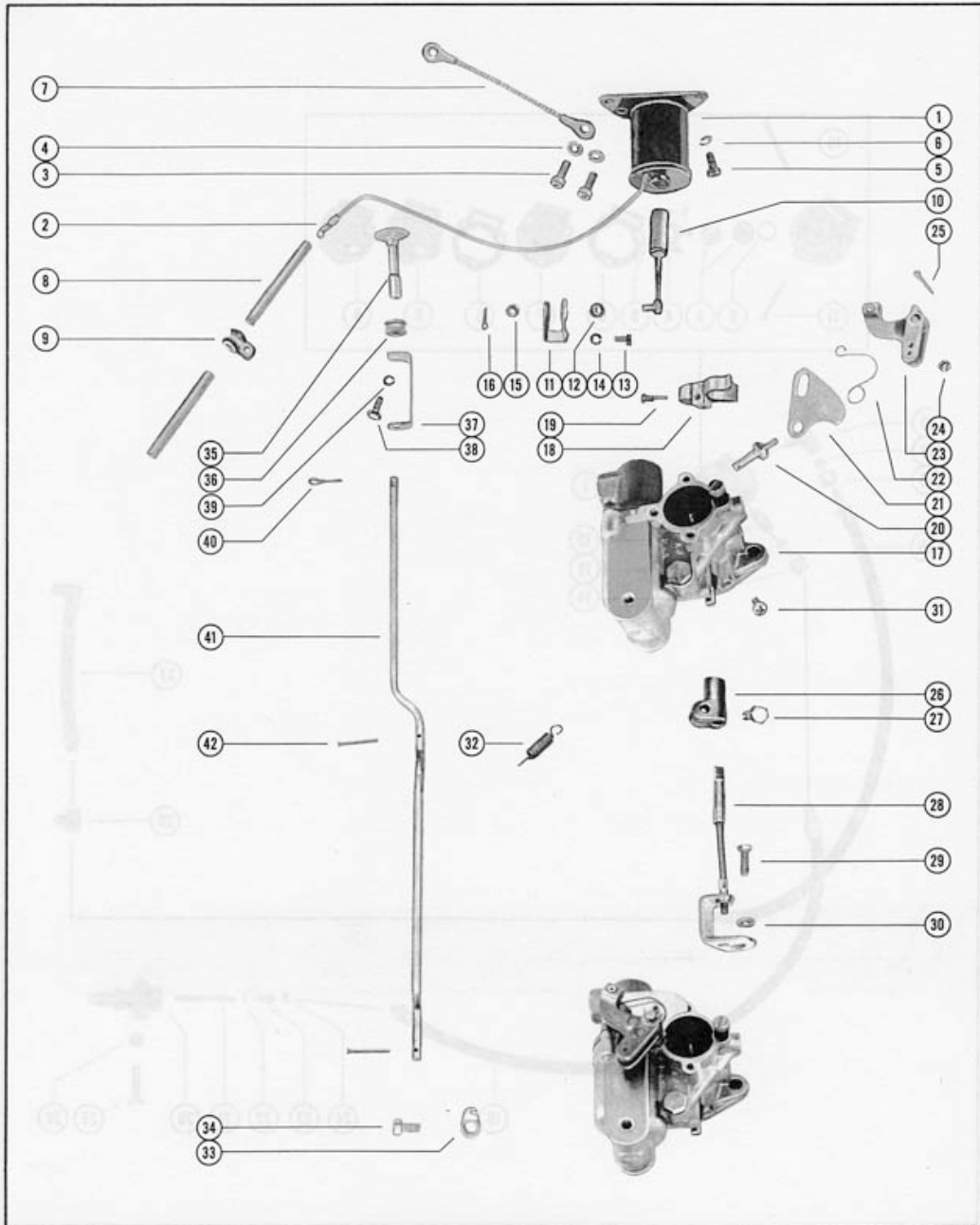
CARBURETOR LINKAGE AND CHOKE SOLENOID

PART NO.	REF. NO.	DESCRIPTION	MARK 35AM	MARK 35AE	MERC 300M	MERC 300E	MERC 350M	MERC 350E	MERC 350M-1
A-28936	1	Choke Solenoid, top cowl	-	1	-	1	-	1	-
C-22647	2	Disconnect, knife splice - choke solenoid	-	1	-	1	-	1	-
C-10-20540	3	Screw, choke solenoid to top cowl	-	2	-	2	-	2	-
C-13-26992	4	Lockwasher, choke solenoid screw	-	2	-	2	-	2	-
C-10-24773	5	Screw, choke solenoid to top cowl	-	1	-	1	-	1	-
C-13-26991	6	Lockwasher, choke solenoid screw	-	1	-	1	-	1	-
A-26716A1	7	Ground Strap Assembly, choke solenoid to adaptor	-	1	-	1	-	1	-
A-32-26101	8	Sleeve, choke solenoid wire and harness wire	-	2	-	2	-	2	-
C-54-26643	9	Clamp, choke wire to starter solenoid	-	1	-	-	-	-	-
C-54-24836	9	Clamp, choke wire to starter solenoid	-	-	-	1	-	1	-
C-27031A1	10	Plunger Assembly, choke solenoid	-	1	-	1	-	1	-
A-27126	11	Adaptor Plate, choke plunger	-	1	-	1	-	1	-
C-25-26633	12	Grommet, adaptor plate	-	1	-	1	-	1	-
C-10-21281	13	Screw, adaptor plate to choke rod bracket	-	1	-	1	-	1	-
C-13-26994	14	Lockwasher, adaptor plate fastening screw	-	1	-	1	-	1	-
C-12-26014	15	Washer, choke solenoid link	-	1	-	1	-	1	-
C-18-26953	16	Cotter Pin, choke solenoid link fastening	-	1	-	1	-	1	-
A-1326-1119	17	Carburetor Assembly, Complete	2	2	-	-	-	-	-
A-1326-1604	17	Carburetor Assembly, Complete	2	2	#2	-	-	-	-
A-1334-1701	17	Carburetor Assembly, Complete	-	-	*2	*2	2	2	2
A-29443	18	Cluster, throttle lever (upper carburetor)	1	1	#1	#1	-	-	-
A-27917	18	Cluster, throttle lever (upper carburetor)	-	-	*1	*1	1	1	1
C-10-20847	19	Screw, set - cluster to throttle lever	1	1	1	1	1	1	1
A-10-20176	20	Screw, choke lever pivot pin	2	2	2	2	2	2	2
A-20173	21	Shutter, choke	2	2	#2	#2	-	-	-
A-30014	21	Shutter, choke	-	-	*2	*2	2	2	2
A-24-26067	22	Spring, choke shutter	2	2	2	2	2	2	2
A-25881A1	23	Choke Lever Assembly	2	1	2	1	2	1	2
A-26645A1	23	Choke Lever Assembly (upper carburetor)	-	1	-	1	-	1	-
A-23-26888	24	Bushing, choke lever	-	2	-	2	-	2	-
C-18-20180	25	Cotter Pin, choke lever retaining	2	2	2	2	2	2	2
A-27870	26	Clamp, throttle pickup bracket	1	1	1	1	1	1	1
C-12-30164	--	Washer, clamp to throttle pickup bracket screw	-	-	-	-	1	1	1
C-10-20100	27	Screw, clamp to throttle pickup bracket	1	1	1	1	1	1	1
A-20185A1	28	Bracket, throttle pickup	1	1	#1	#1	-	-	-
A-28007A3	28	Bracket, throttle pickup	-	-	*1	*1	1	1	1
C-10-20191	29	Screw, throttle bracket mounting	1	1	-	-	-	-	-
C-10-29239	29	Screw, throttle bracket mounting	-	-	1	1	1	1	1
C-13-26995	--	Lockwasher, throttle bracket screw	1	1	-	-	-	-	-
C-12-20192	30	Washer, throttle bracket screw	1	1	1	1	1	1	1
C-10-20650	31	Screw, choke rod spring mounting	1	-	1	-	1	-	1
C-12-20192	--	Washer, choke rod spring screw	1	1	-	-	-	-	-
A-24-20649	32	Spring, choke rod positioning	1	-	1	-	1	-	1
A-24-26068	32	Spring, choke rod to retainer	-	1	-	1	-	1	-
C-27711	33	Retainer, choke rod spring	-	1	-	1	-	1	-
C-10-28713	34	Screw, retainer to lower carburetor	-	1	-	1	-	1	-
A-20663	35	Knob, choke rod	1	-	1	-	1	-	1
A-22463	35	Knob, choke rod	-	1	-	1	-	1	-
C-25-20116	36	Grommet, choke rod	1	1	1	1	1	1	1
A-22462	37	"U" Link, choke knob to choke rod	-	1	-	1	-	1	-
C-10-20100	38	Screw, "U" Link to choke knob	-	1	-	1	-	1	-
C-13-26996	39	Lockwasher, "U" Link fastening screw	-	1	-	1	-	1	-
C-18-20180	40	Cotter Pin, choke lever and rod fastening	-	1	-	1	-	1	-
A-28971	41	Choke Rod (not as shown)	1	-	1	-	1	-	1
A-28978	41	Choke Rod	-	1	-	1	-	1	-
C-17-25391	42	Rivet, choke rod to choke lever	2	2	2	2	2	2	2

Use thru Serial #1324410

* Started with Serial #1324411

CARBURETOR LINKAGE AND CHOKE SOLENOID



Revised March 1966

(MARK 35A, MERC 300, MERC 350)

Page 14

FUEL PUMP ASSEMBLY

PART NO.	REF. NO.	DESCRIPTION	MARK 35AM	MARK 35AE	MERC 300M	MERC 300E	MERC 350M	MERC 350E	MERC 350M-1
A-23009A1	1	Fuel Pump Assembly	1	1	-	-	-	-	-
A-29178A2	1	Fuel Pump Assembly	1	1	1	1	1	1	-
A-30269A2	1	Fuel Pump Assembly	-	-	-	-	-	-	1
■A-27-23005	2	Gasket, check valve to housing	2	2	2	2	2	2	2
A-21-30430	3	Valve, check	2	2	2	2	2	2	2
A-23004	4	Retainer, check valve	1	1	1	1	1	1	1
C-10-20037	5	Screw, retainer to housing	2	2	2	2	2	2	2
■A-27-24863	6	Gasket, fuel pump	2	2	2	2	2	2	2
■A-23014	7	Diaphragm, fuel pump	1	1	1	1	1	1	1
A-22-29380	-	Plug, pipe - fuel pump	1	1	1	1	1	1	-
A-23008	8	Cover, fuel pump	1	1	1	1	1	1	1
■A-27-30276	9	Gasket, fuel pump cover	1	1	1	1	1	1	1
C-10-29030	10	Screw, fuel pump mounting (1 7/8")	#2	#2	-	-	-	-	-
C-10-29126	10	Screw, fuel pump mounting (1 3/4")	*2	*2	2	2	2	2	2
C-10-29029	11	Screw, fuel pump mounting (1 1/2")	1	1	1	1	1	1	1
A-22-23595	--	Connector, pump outlet to elbow	#1	#1	-	-	-	-	-
A-22-24690	--	Elbow, pump outlet to fuel line	#1	#1	-	-	-	-	-
A-22-22993	12	Connector, fuel line to fuel pump inlet	-	-	1	1	1	1	1
A-22-22946	13	Sleeve, rubber	-	-	1	1	1	1	1
A-11-22948	14	Nut, elbow	-	-	1	1	1	1	1
A-32-30035	15	Fuel Line, fuel pump to lower filter	1	1	1	1	1	1	1
A-22-22995	--	Elbow, fuel pump inlet	1	1	-	-	-	-	-
A-22-22995	16	Elbow, fuel pump outlet to fuel line	-	-	1	1	1	1	1
A-22-22946	17	Sleeve, rubber	1	1	1	1	1	1	1
A-11-22948	18	Nut, elbow	1	1	1	1	1	1	1
A-32-23761	19	Fuel Line, fuel pump to adaptor	1	1	-	-	-	-	-
A-32-30036	19	Fuel Line, fuel pump to adaptor	-	-	1	1	1	1	1
A-22833	20	Adaptor, check unit (fuel line)	1	1	1	1	1	1	1
A-23069	21	Stem, check unit adaptor	1	1	1	1	1	1	1
C-25-20415	22	"O" Ring, adaptor stem	1	1	1	1	1	1	1
A-24-23067	23	Spring, adaptor stem	1	1	1	1	1	1	1
A-23068	24	Cup Washer, adaptor	1	1	1	1	1	1	1
C-10-20784	25	Screw, adaptor to bottom cowl	2	2	2	2	2	2	2
C-11-24652	26	Nut, adaptor screw	2	2	2	2	2	2	2
C-22-25443	--	Elbow, upper filter to fuel line	#1	#1	-	-	-	-	-
A-22-22949	--	Elbow, upper filter to fuel line	*1	*1	-	-	-	-	-
A-32-25228	27	Fuel Line, upper to lower filter (5 1/2")	#1	#1	-	-	-	-	-
A-32-30038	27	Fuel Line, upper to lower filter	*1	*1	-	-	1	1	1
A-32-30040	27	Fuel Line, upper to lower filter	-	-	1	1	-	-	-
A-22-23763	28	Tee Assembly, lower filter	#1	#1	-	-	-	-	-
A-22-25956	28	Tee Assembly, lower filter	*1	*1	1	1	1	1	1
A-22-22946	--	Sleeve, rubber	2	2	-	-	-	-	-
A-11-22948	--	Nut, filter tee	2	2	-	-	-	-	-

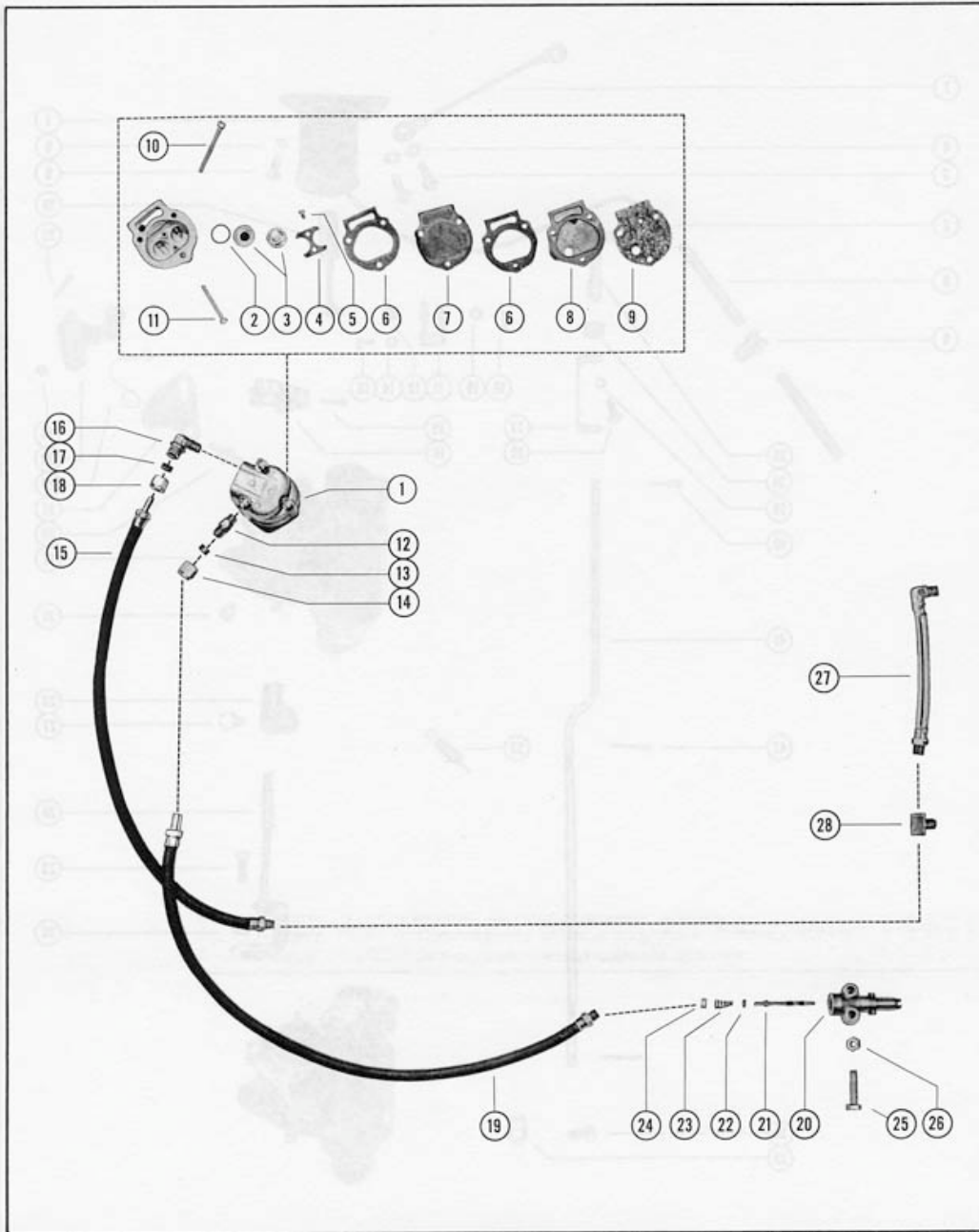
Use thru Serial #1261034

* Started with Serial #1261035

NOTE: The following parts are required to fasten A-50-32403 (Mark 35 models) and A-50-32411 (Merc 300 and Merc 350 models) Starter Motor Assemblies to crankcase flange:

C-10-22698	Screw, starter motor to crankcase	2
C-13-26993	Lockwasher, starter motor fastening screw	2
A-25596	Wire, starter motor to starter solenoid	1
C-10-29197	Screw, ground wire to starter motor	1

CARBURETOR FUEL PUMP ASSEMBLY



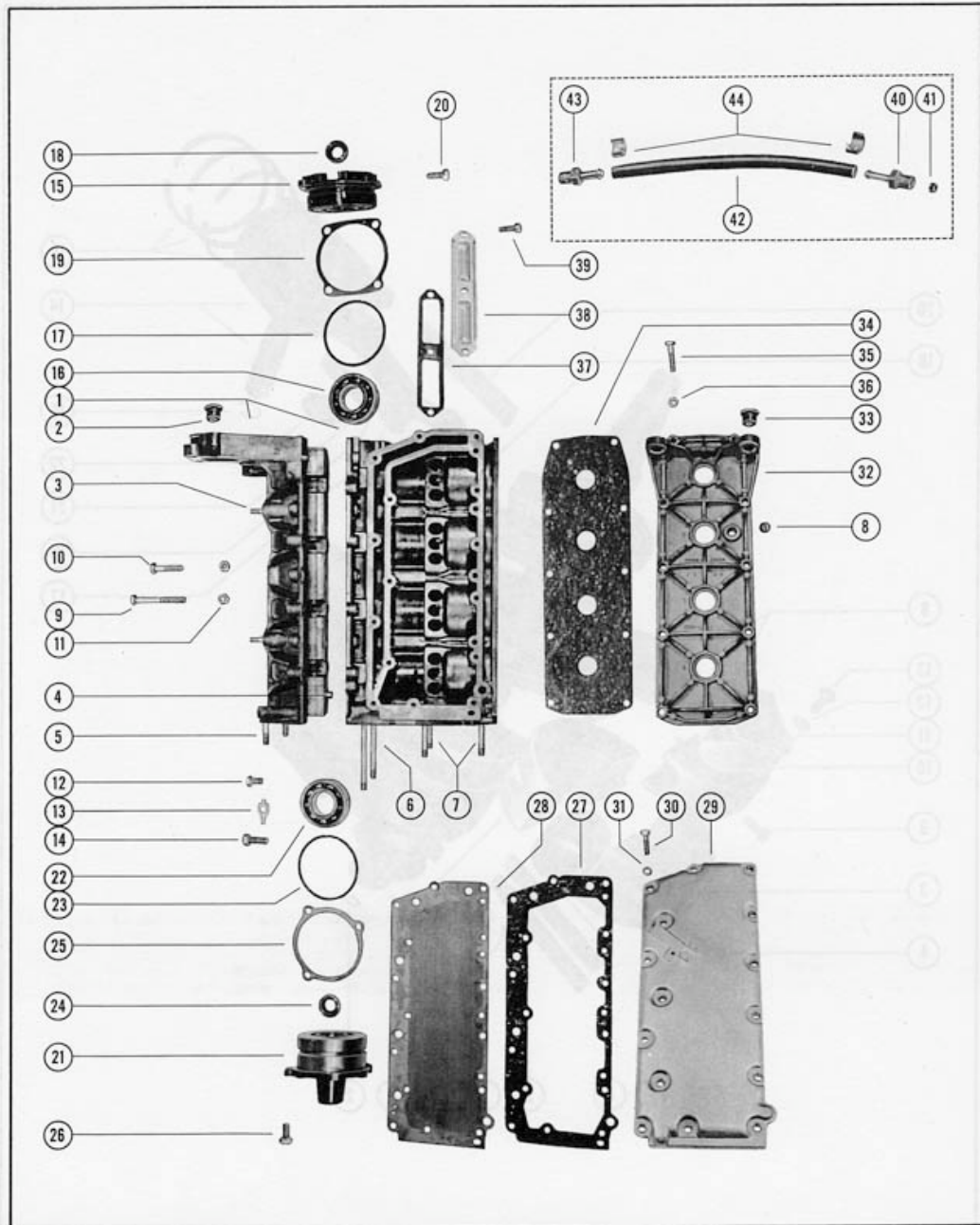
CYLINDER BLOCK AND CRANKCASE ASSEMBLY

PART NO.	REF. NO.	DESCRIPTION	MARK	MARK	MERC	MERC	MERC	MERC	MERC	MERC
			35AM	35AF	35AE	300M	300E	350M	350E	350M-1
A-808-1321A4	1	Cylinder Block and Crankcase Assembly	1	1	1	1	1	1	1	1
N. S. S.	-	Crankcase	1	1	1	1	1	1	1	1
C-17-20323	-	Dowel Pin, cylinder block to center main bearing	1	1	1	1	1	1	1	1
C-17-20032	-	Dowel Pin, cylinder block to main bearing	1	1	1	1	1	1	1	1
A-23-26348	2	Bushing, crankcase	2	2	2	2	2	2	2	2
C-16-25885	3	Stud, carburetor mounting (1 1/4")	4	4	4	4	4	4	4	4
C-17-20033	4	Dowel Pin, crankcase to cylinder block	2	2	2	2	2	2	2	2
C-16-29988	5	Stud, crankcase to drive shaft housing (1 9/16")	2	2	2	2	2	2	2	2
C-16-29990	6	Stud, cylinder block to drive shaft housing (3 3/8")	2	2	2	2	2	2	2	2
C-16-29989	7	Stud, cylinder block to drive shaft housing (1 7/8")	4	4	4	4	4	4	4	4
A-22-30139	8	Plug, pipe - water pressure hole (see note below)	-	-	1	1	1	1	1	1
C-10-22039	9	Screw, crankcase to cylinder block (2 3/4")	4	4	4	4	4	4	4	4
C-10-22040	10	Screw, crankcase to cylinder block (1 1/2")	14	14	14	14	14	14	14	14
C-12-20084	--	Washer, crankcase screw	2	2	-	-	-	-	-	-
C-11-29250	11	Nut, crankcase fastening screw	18	18	18	18	18	18	18	18
C-10-20089	12	Screw, main bearing locking (Use thru Serial #1352947)	2	2	2	2	2	2	2	2
C-10-26801	12	Screw, main bearing locking (Started with Serial #1352948)	-	-	2	2	2	2	2	2
C-14-20091	13	Tab Washer, bearing locking screw	3	3	3	3	3	3	3	3
C-10-20359	14	Screw, center main bearing locking	1	1	1	1	1	1	1	1
A-1100-339A1	15	End Cap Assembly, upper	1	1	1	1	1	1	1	1
A-30-20080	16	Bearing, ball - upper end cap	1	1	1	1	1	1	1	1
■C-25-20081	17	"O" Ring, upper end cap	1	1	1	1	1	1	1	1
A-26-29476	18	Oil Seal	1	1	1	1	1	1	1	1
A-15-20082	19	Shim, upper end cap to crankcase	*	*	*	*	*	*	*	*
C-13-26993	--	Lockwasher, upper end cap mounting screw	4	4	-	-	-	-	-	-
C-10-23703	20	Screw, upper end cap mounting	4	4	-	-	-	-	-	-
C-10-29198	20	Screw, upper end cap mounting	-	-	4	4	4	4	4	4
A-1102-1484A1	21	End Cap Assembly, lower	1	1	1	1	1	1	1	1
A-30-20080	22	Bearing, ball - lower end cap	1	1	1	1	1	1	1	1
■C-25-20081	23	"O" Ring, lower end cap	1	1	1	1	1	1	1	1
A-26-29476	24	Oil Seal, upper	1	1	1	1	1	1	1	1
A-26-29477	24	Oil Seal, lower	1	1	1	1	1	1	1	1
A-21-28481A1	--	Check Valve Assembly, lower end cap	1	1	1	1	1	1	1	1
A-15-20085	25	Shim, lower end cap to crankcase	*	*	*	*	*	*	*	*
C-13-26993	--	Lockwasher, lower end cap mounting screw	3	3	-	-	-	-	-	-
C-10-23703	26	Screw, lower end cap mounting	3	3	-	-	-	-	-	-
C-10-29198	26	Screw, lower end cap mounting	-	-	3	3	3	3	3	3
■A-27-26923	27	Gasket, cylinder block to manifold plate	1	1	1	1	1	1	1	1
A-26922	28	Plate, exhaust manifold	1	1	1	1	1	1	1	1
■A-27-26923	27	Gasket, manifold plate to cover	1	1	1	1	1	1	1	1
A-28240	29	Cover, exhaust manifold	1	1	1	1	1	1	1	1
C-10-28668	30	Screw, manifold cover mounting	13	13	13	13	13	13	13	13
C-10-28666	30	Screw, manifold cover and high tension lead clip mounting	2	2	2	2	2	2	2	2
C-12-20028	31	Washer, manifold cover and high tension lead clip screws	2	2	2	2	2	2	2	2
A-1000-1A1	32	Cylinder Block Cover Assembly (see note below)	1	1	1	1	1	1	1	1
A-23-26348	33	Bushing, cylinder block cover	2	2	2	2	2	2	2	2
■A-27-22333	34	Gasket, cylinder block cover	1	1	1	1	1	1	1	1
C-10-20653	35	Screw, cylinder block cover mounting	10	10	10	10	10	10	10	10
C-11-24652	36	Nut, cover mounting screw	10	10	10	10	10	10	10	10
■A-27-27936	37	Gasket, transfer port cover	2	2	2	2	2	2	2	2
A-27935	38	Cover, transfer port	2	2	2	2	2	2	2	2
C-12-20028	--	Washer, transfer port cover fastening screw	6	6	-	-	-	-	-	-
C-10-20540	39	Screw, transfer port cover fastening	6	6	6	6	6	6	6	6
A-21-28483A1	40	Check Valve Assembly, bleed hose (upper)	1	1	1	1	1	1	1	1
A-21-28481A1	41	Check Valve Assembly, bleed hose	1	1	1	1	1	1	1	1
A-32-28654	42	Hose, cylinder bleed (6 1/2")	1	1	1	1	1	1	1	1
C-22-20445	43	Connector, cylinder bleed hose (lower)	1	1	1	1	1	1	1	1
C-54-20387	44	Clamp, bleed hose to check valve and connector	2	2	2	2	2	2	2	2

NOTE: On later production engines, the A-22-30139 pipe plug (water pressure hole) was used on either cylinder block cover or cylinder block.

* = As Required

CYLINDER BLOCK AND CRANKCASE ASSEMBLY



Revised March 1966

(MARK 35A, MERC 300, MERC 350)

Page 18

CRANKSHAFT, PISTON AND CONNECTING ROD

PART NO.	REF. NO.	DESCRIPTION	MARK	MARK	MERC	MERC	MERC	MERC	MERC	MERC
			35AM	35AE	300M	300E	350M	350E	350M-1	
A-400-1319	-	Crankshaft <i>Use thru Serial #1271993 - - for replacement order</i>	-	-	-	1	-	-	-	-
A-20043	-	Oiler, felt <i>A-400-1730 Crankshaft and C-25-29619 "O" Ring.</i>	-	-	-	1	-	-	-	-
A-400-1730	1	Crankshaft	1	1	1	1	1	1	1	1
A-20043	2	Oiler, felt - drive shaft spline <i>(not as shown)</i>	1	1	-	-	-	-	-	-
C-25-29619	2	"O" Ring, drive shaft spline	-	-	1	1	1	1	1	1
A-500-1030A1	3	Center Main Bearing Assembly	1	1	1	1	1	1	1	1
C-17-20032	-	Dowel Pin, center main bearing	2	2	2	2	2	2	2	2
C-10-28666	4	Screw, center main bearing clamping	2	2	2	2	2	2	2	2
A-29-20046	5	Bearing, needle	56	56	56	56	56	56	56	56
A-20047	6	Race, outer	1	1	1	1	1	1	1	1
C-53-20048	7	Ring, snap - outer race clamping	1	1	1	1	1	1	1	1
C-17-20379	-	Dowel Pin <i>(stepped)</i>	1	1	1	1	1	1	1	1
A-526-1436A1	8	Main Bearing Assembly <i>(valve type)</i>	2	2	2	2	2	2	2	-
C-17-20032	-	Dowel Pin, main bearing	20	20	20	20	20	20	20	-
C-10-20049	9	Screw, main bearing clamping	4	4	4	4	4	4	4	-
A-34-20888A1	10	Reed Set, matched - main bearing	2	2	2	2	2	2	2	-
A-34-20053	11	Reed Stop, main bearing reed valves	8	8	8	8	8	8	8	-
C-12-26014	12	Washer, reed stop mounting screw	8	8	8	8	8	8	8	-
C-10-20055	13	Screw, reed stop mounting	8	8	8	8	8	8	8	-
A-527-1619A1	8	Main Bearing Assembly <i>(valve type)</i>	-	-	-	2	2	2	2	2
C-17-20032	-	Dowel Pin, main bearing	-	-	20	20	20	20	20	20
C-10-26184	9	Screw, main bearing clamping	-	-	4	4	4	4	4	4
C-11-24652	-	Nut, main bearing clamping screw	-	-	4	4	4	4	4	4
A-34-20888A1	10	Reed Set, matched - main bearing	-	-	2	2	2	2	2	2
A-34-20053	11	Reed Stop, main bearing reed valves	-	-	8	8	8	8	8	8
C-10-29465	13	Screw, reed stop mounting	-	-	8	8	8	8	8	8
C-11-29469	--	Nut, reed stop mounting screw	-	-	8	8	8	8	8	8
A-718-1193A2	14	Piston and Piston Pin Assembly	4	4	4	4	4	4	4	4
A-40-20057	15	Lock Ring, piston pin	8	8	8	8	8	8	8	8
A-39-20058	16	Ring, piston	12	12	12	12	12	12	12	12
A-600-7A1	17	Connecting Rod and Cap Assembly <i>(see note below)</i>	4	4	4	4	4	4	4	4
C-10-20060	18	Screw, connecting rod	8	8	8	8	8	8	8	8
C-11-20061	19	Nut, connecting rod screw	8	8	8	8	8	8	8	8
A-29-20046	20	Bearing, needle - crankpin	100	100	100	100	100	100	100	100
A-29-20063	21	Bearing, needle - piston pin	88	88	88	88	88	88	88	88
C-12-20064	22	Washer, needle locating	8	8	8	8	8	8	8	8

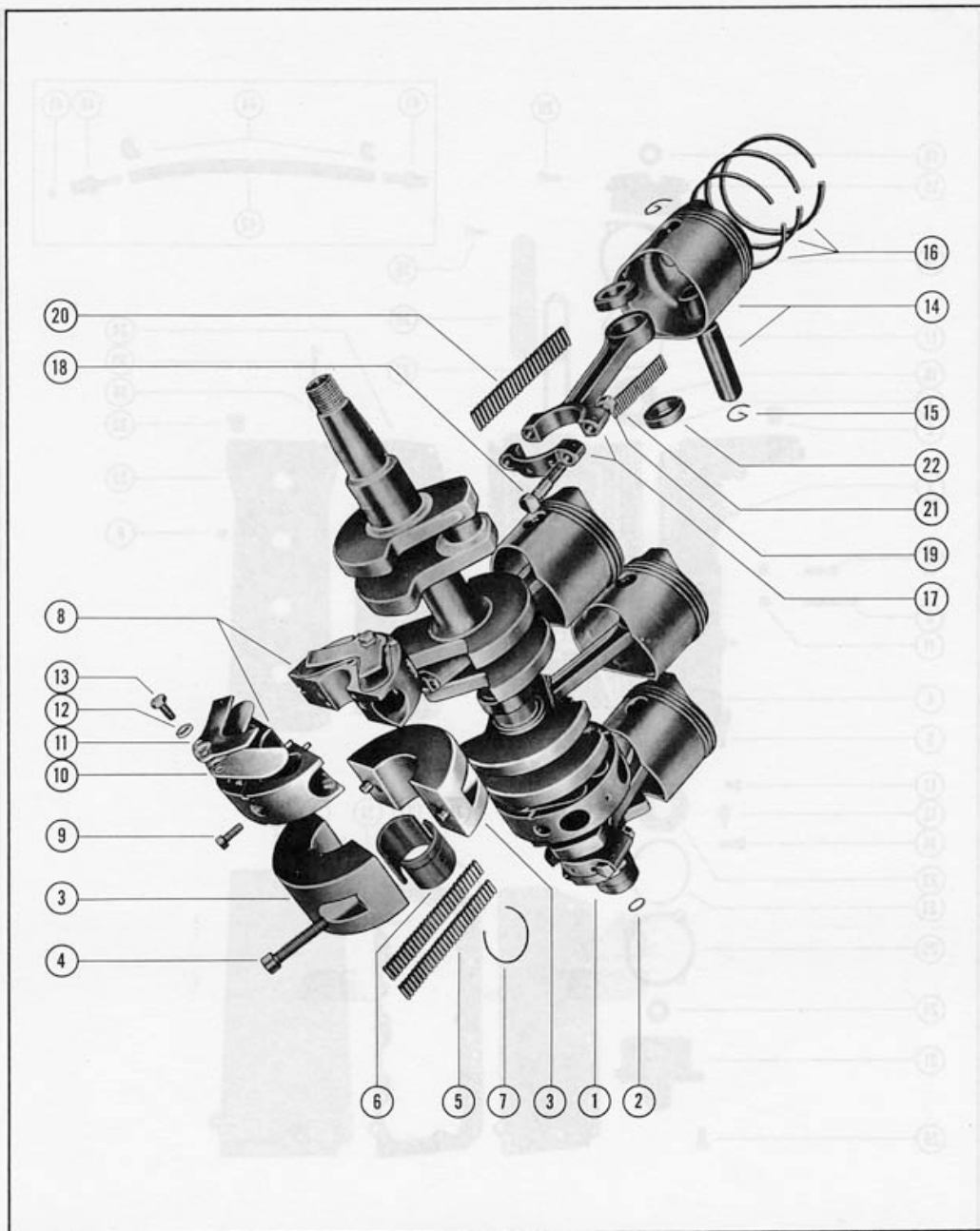
Oversize Piston and Ring

A-718-1313A1	--	Piston and Piston Pin Assembly (.015 oversize)	4	4	4	4	4	4	4	4
A-39-20992	--	Ring, piston (.015 oversize)	12	12	12	12	12	12	12	12

NOTE: A-600-7A1, A-600-7A3 and A-600-7A4 Connecting Rod and Cap assemblies are identical to each other except for thickness of needle locating washers. The connecting rods can be made interchangeable by removing washers from one assembly and using the washers of another thickness, depending on which model engine they are to be used. Consult parts list for correct washer part number. See chart below.

Connecting Rod & Cap Assembly	Washer	Washer Thickness
A-600-7A1	12-20064	1/4"
A-600-7A3	12-26178	1/32"
A-600-7A4	12-28121	1/16"

CRANKSHAFT, PISTON AND CONNECTING ROD



BOTTOM COWL ASSEMBLY

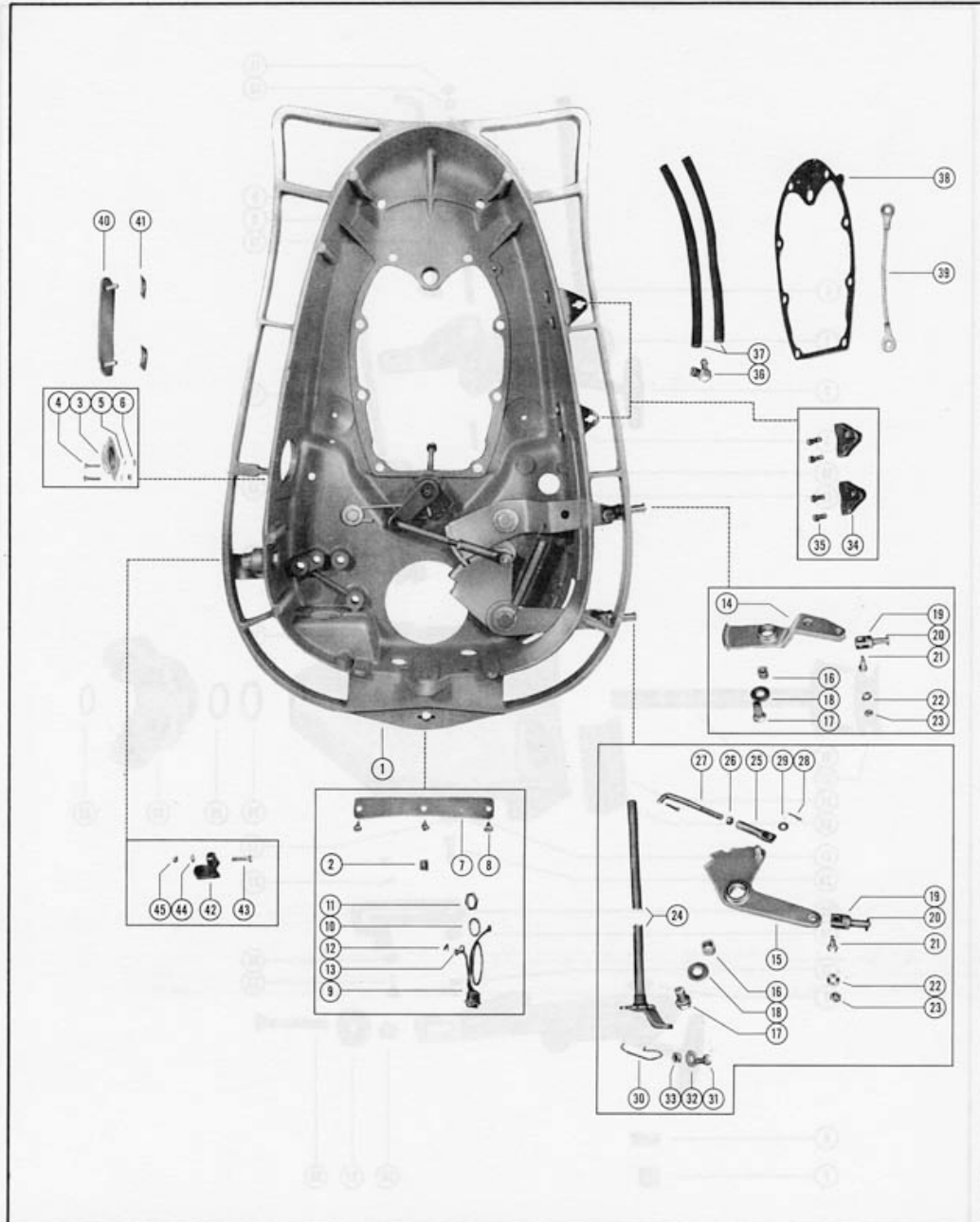
PART NO.	REF. NO.	DESCRIPTION	MARK 35AM	MARK 35AE	MERC 300M	MERC 300E	MERC 350M	MERC 350E	MERC 350M-1
A-103-1544A1	1	Bottom Cowl Assembly	-	1	1	1	1	1	1
A-23-25194	-	Bushing, oilite - shift shaft	1	1	1	1	-	-	-
A-21041	2	Insert, tap lock	1	1	1	1	1	1	1
A-29206	3	Plug, bottom cowl harness hole	1	*	1	*	1	*	1
C-10-26128	4	Screw, plug to bottom cowl	4	*	4	*	4	*	4
C-13-26995	5	Lockwasher, plug fastening screw	4	*	4	*	4	*	4
C-11-26419	6	Nut, plug fastening screw	4	*	4	*	4	*	4
A-37-23076	-	Decal, MercElectric - bottom cowl	-	1	-	-	-	-	-
A-23760	7	Baffle, bottom cowl	1	1	1	1	1	1	1
C-10-21106	8	Screw, baffle to bottom cowl	3	3	3	3	3	3	3
A-21104A2	9	Connector Base Assembly	1	-	1	-	1	-	1
C-13-21972	10	Lockwasher, connector base	1	-	1	-	1	-	1
C-11-21971	11	Nut, connector base fastening	1	-	1	-	1	-	1
C-54-25231	12	Clip, connector base lead wire	1	-	1	-	1	-	1
C-10-21106	13	Screw, lead wire clip to bottom cowl	1	-	1	-	1	-	1
A-27956	14	Bracket, magneto control (lower)	#1	#1	-	-	-	-	-
A-29392	14	Bracket, magneto control (lower)	+1	+1	-	-	-	-	-
A-29532	14	Bracket, magneto control (lower)	-	-	1	1	1	1	1
A-24-24826	--	Spring, control bracket tension	#1	#1	-	-	-	-	-
A-28253	15	Lever, shift control	#1	#1	-	-	-	-	-
A-29391	15	Lever, shift control	+1	+1	-	-	-	-	-
A-30612	15	Lever, shift control	-	-	1	1	1	1	1
A-23-20008	--	Bushing, magneto bracket and shift lever (nylon)	#2	#2	-	-	-	-	-
A-23-21008	--	Bushing, magneto bracket and shift lever (steel)	#2	#2	-	-	-	-	-
A-23-29529	16	Sleeve, magneto bracket and shift lever	-	-	2	2	2	2	2
C-10-21077	17	Screw, bracket and lever fastening	#2	#2	-	-	-	-	-
C-10-26632	17	Screw, bracket and lever fastening	-	-	2	2	2	2	2
C-12-21040	18	Washer, bracket and lever fastening screw	#2	#2	-	-	-	-	-
C-12-29395	18	Washer, bracket and lever fastening screw	-	-	4	4	4	4	4
A-16-29394	--	Stud, magneto bracket and shift lever	+2	+2	-	-	-	-	-
C-12-29395	--	Washer, bracket and lever fastening stud	+4	+4	-	-	-	-	-
C-11-23161	--	Nut, bracket and lever fastening	+2	+2	-	-	-	-	-
A-17-30978A1	19	Pin Assembly, clevis yoke	2	2	2	2	2	2	2
C-17-23928	20	Roll Pin, clevis yoke pin	2	2	2	2	2	2	2
C-10-20584	21	Screw, clevis pin fastening	2	2	2	2	2	2	2
C-13-29402	22	Washer, wave - pin fastening screw	2	2	2	2	2	2	2
C-12-20128	--	Washer, pin fastening screw	2	2	-	-	-	-	-
C-11-20110	23	Nut, pin fastening screw	2	2	-	-	-	-	-
C-11-29488	23	Nut, pin fastening screw	-	-	2	2	2	2	2
A-25180	24	Shaft, shift (upper) - SHORT SHAFT	1	1	1	1	1	1	1
A-25163	24	Shaft, shift (upper) - LONG SHAFT	1	1	1	1	1	1	1
A-27714	25	Rod (sleeve), shift control end	1	1	1	1	1	1	1
C-11-25168	26	Nut, shift shaft end adjusting	1	1	1	1	1	1	1
A-25134	27	Rod, link - shift shaft end	1	1	1	1	1	1	1
C-18-20180	28	Cotter Pin, link rod to shift shaft	2	2	2	2	2	2	2
C-12-20583	29	Washer, link rod	1	1	1	1	2	2	2
A-24-25065	30	Spring, detent	1	1	1	1	1	1	1
C-10-20776	31	Screw, detent spring to bottom cowl	1	1	1	1	1	1	1
C-12-20346	32	Washer, detent spring screw	1	1	1	1	1	1	1
C-11-20013	33	Nut, detent spring screw	1	1	1	1	-	-	-
C-11-20184	33	Nut, detent spring screw	-	-	-	-	1	1	1
A-20557	34	Bracket, cable end anchor	2	2	2	2	2	2	2
C-10-20100	35	Screw, anchor bracket to bottom cowl	4	4	-	-	-	-	-
C-10-29200	35	Screw, anchor bracket to bottom cowl	-	-	4	4	4	4	4
C-13-20554	--	Lockwasher, anchor bracket screw	4	4	-	-	-	-	-
C-22-25885	36	Elbow, plastic - magneto vent tube	2	2	2	2	2	2	2
A-32-29164	37	Tube, vent - magneto	2	2	2	2	2	2	2
A-27-20390	38	Gasket, powerhead to bottom cowl	1	1	1	1	1	1	1
A-30109	39	Ground Strap Assembly, cylinder block to cowl	1	1	1	1	1	1	1
A-38-27720	40	Plate, trade mark - bottom cowl	1	1	1	1	1	1	1
C-53-25539	41	Fastener, plate to bottom cowl	2	2	2	2	2	2	2
A-26552	42	Support, external wiring harness	-	1	-	1	-	1	-
C-10-20639	43	Screw, harness support to bottom cowl	-	1	-	1	-	1	-
C-12-20084	44	Washer, harness support fastening screw	-	1	-	1	-	1	-
C-11-29250	45	Nut, harness support screw	-	1	-	1	-	1	-

Use thru Serial #1269884

(* remove - not required on electric engine)

+ Started with Serial #1269885

BOTTOM COWL ASSEMBLY



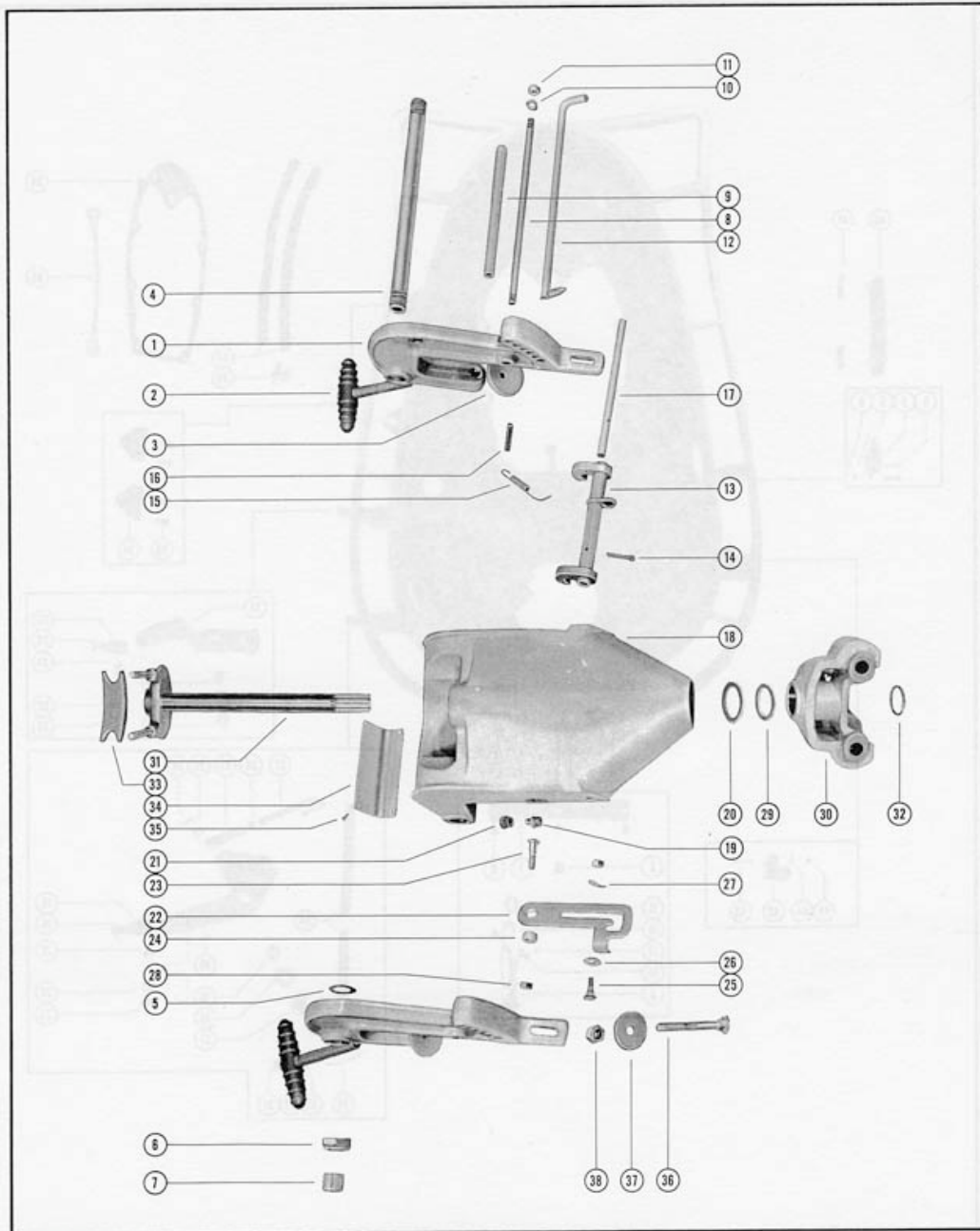
CLAMP AND SWIVEL BRACKET

PART NO.	REF. NO.	DESCRIPTION	MARK 35AM	MARK 35AF	MERC 300M	MERC 300E	MERC 350M	MERC 350E	MERC 350M-1
A-1427-1310A1	1	Clamp Bracket Assembly (SHORT SHAFT)	2	2	2	2	2	2	2
A-1440-1464A1	1	Clamp Bracket Assembly (LONG SHAFT)	2	2	2	2	2	2	2
A-22477A1	2	Thumb Screw Assembly (SHORT SHAFT)	2	2	2	2	2	2	2
A-28403A3	2	Thumb Screw Assembly (LONG SHAFT)	2	2	2	2	2	2	2
A-12-26227	3	Washer, thumb screw (SHORT SHAFT)	2	2	2	2	2	2	2
A-12-28404	3	Washer, thumb screw (LONG SHAFT)	2	2	2	2	2	2	2
A-28122	4	Tube, tilt - clamp bracket to swivel bracket	1	1	1	1	1	1	1
A-15-25600	5	Shim, clamp bracket to swivel bracket (.010)	2	2	2	2	2	2	2
C-11-25599	6	Nut, tilt tube	2	2	2	2	2	2	2
A-25606	7	Cap, plastic - tilt tube	2	2	2	2	2	2	2
A-54-25735	-	Clip, safety chain (no longer used on later engines)	1	1	-	-	-	-	-
A-16-20221	8	Stud, clamp bracket	1	1	1	1	1	1	1
A-23-20222	9	Spacer, clamp bracket stud	1	1	1	1	1	1	1
C-13-26993	10	Lockwasher, clamp bracket stud	2	2	2	2	2	2	2
C-11-20083	11	Nut, clamp bracket stud	2	2	2	2	2	2	2
A-17-30687A1	12	Tilt Lock Pin Assembly	1	1	1	1	1	1	1
A-26903A2	13	Reverse Lock Assembly (SHORT SHAFT)	1	1	1	1	1	1	1
A-26903A3	13	Reverse Lock Assembly (LONG SHAFT)	1	1	1	1	1	1	1
C-18-20209	14	Cotter Pin, reverse lock to shaft	1	1	1	1	1	1	1
A-24-20210	15	Spring, reverse lock tension	1	1	-	-	-	-	-
A-24-29821	15	Spring, reverse lock tension	-	-	1	1	1	1	1
C-17-25598	16	Roll Pin, reverse lock spring attaching	1	1	1	1	1	1	1
A-20208	17	Shaft, reverse lock to swivel bracket	1	1	1	1	1	1	1
A-1401-1080A1	18	Swivel Bracket Assembly (SHORT SHAFT)	1	1	1	1	1	1	1
A-1442-1400A1	18	Swivel Bracket Assembly (LONG SHAFT)	1	1	1	1	1	1	1
C-22-23612	19	Fitting, grease - swivel bracket	1	1	1	1	1	1	1
C-26-32911	20	Oil Seal, swivel bracket	1	1	1	1	1	1	1
C-29359	21	Lubricap, swivel bracket grease fitting	1	1	1	1	1	1	1
A-20215	--	Lever, tilt stop - starboard side (SHORT SHAFT)	1	1	1	1	1	1	1
A-29056	--	Lever, tilt stop - starboard side (LONG SHAFT)	1	1	1	1	1	1	1
A-26864	22	Lever, tilt stop - port side (SHORT SHAFT)	1	1	1	1	1	1	1
A-29057	22	Lever, tilt stop - port side (LONG SHAFT)	1	1	1	1	1	1	1
C-10-20217	23	Screw, anchor - tilt stop lever (SHORT SHAFT)	2	2	2	2	2	2	2
C-10-29054	23	Screw, anchor - tilt stop lever (LONG SHAFT)	2	2	2	2	2	2	2
A-23-20216	24	Spacer, tilt stop lever (SHORT SHAFT)	2	2	2	2	2	2	2
A-23-29055	24	Spacer, tilt stop lever (LONG SHAFT)	2	2	2	2	2	2	2
C-10-29237	25	Screw, retaining - tilt stop lever (SHORT SHAFT)	2	2	2	2	2	2	2
C-10-27790	25	Screw, retaining - tilt stop lever (LONG SHAFT)	2	2	2	2	2	2	2
A-15-20473	26	Shim, retaining screw - port side	1	1	1	1	1	1	1
C-13-20846	27	Washer, wave - retaining screw - port side	1	1	1	1	1	1	1
C-12-20028	--	Washer, anchor and retaining screw	4	4	-	-	-	-	-
C-13-26992	--	Lockwasher, anchor and retaining screw	4	4	-	-	-	-	-
C-11-24652	28	Nut, anchor and retaining screw (.060)	4	4	4	4	4	4	4
C-12-25176	29	Washer, swivel pin to bottom yoke	1	1	1	1	1	1	1
C-12-27964	--	Washer, swivel pin to bottom yoke (.018)	* * *	* * *	* * *	* * *	* * *	* * *	* * *
A-30202A1	30	Bottom Yoke Assembly (SHORT SHAFT) - see note below	1	1	1	1	1	1	1
A-30462A1	30	Bottom Yoke Assembly (LONG SHAFT)	1	1	1	1	1	1	1
A-17-27739A2	31	Swivel Pin and Top Yoke Assembly (SHORT SHAFT)	1	1	1	1	1	1	1
A-17-28419A4	31	Swivel Pin and Top Yoke Assembly (LONG SHAFT)	1	1	1	1	1	1	1
C-53-27743	32	Ring, retaining - swivel pin (SHORT SHAFT)	1	1	1	1	1	1	1
C-11-28202	32	Nut, swivel pin (LONG SHAFT) - not as shown	1	1	1	1	1	1	1
A-30711	33	Bumper, top yoke	1	1	1	1	1	1	1
A-38-28850	34	Serial Plate	1	1	-	-	-	-	-
A-38-29533	34	Serial Plate	-	-	1	1	-	-	-
A-38-31056	34	Serial Plate	-	-	-	-	1	1	1
C-10-25612	35	Screw, drive - serial plate to swivel bracket	4	4	4	4	4	4	4
C-10-26483	36	Bolt, carriage - clamp bracket to boat transom (SHORT SHAFT)	2	2	2	2	2	2	2
C-10-28009	36	Bolt, carriage - clamp bracket to boat transom (LONG SHAFT)	2	2	2	2	2	2	2
C-12-26485	37	Washer, carriage bolt (SHORT SHAFT)	2	2	2	2	2	2	2
C-12-28008	37	Washer, carriage bolt (LONG SHAFT)	2	2	2	2	2	2	2
C-11-26484	38	Nut, carriage bolt (SHORT SHAFT)	2	2	2	2	2	2	2
C-11-28010	38	Nut, carriage bolt (LONG SHAFT)	2	2	2	2	2	2	2

NOTE: The A-25178 Bottom Yoke is no longer available and is replaced by A-30202A1 Bottom Yoke Assembly. Only difference being is thickness of washer used. See Page 25, reference #35.

* - As Required

CLAMP AND SWIVEL BRACKET



DRIVE SHAFT HOUSING ASSEMBLY

PART NO.	REF. NO.	DESCRIPTION	MARK	MARK	MERC	MERC	MERC	MERC	MERC	MERC
			35AM	35AF	300M	300E	350M	350E	350M-1	
A-1522-1446	1	Drive Shaft Housing (use with 3/8" stud) - SHORT SHAFT	1	1	-	-	-	-	-	-
A-1535-1441	1	#Drive Shaft Housing (use with 3/8" stud) - LONG SHAFT	1	1	-	-	-	-	-	-
A-1522-1567	1	Drive Shaft Housing (use with 7/16" stud) - SHORT SHAFT	1	1	1	1	1	1	1	1
A-1535-1566	1	+Drive Shaft Housing (use with 7/16" stud) - LONG SHAFT	1	1	1	1	1	1	1	1
A-32-25187	2	Tube, water inlet (SHORT SHAFT)	1	1	1	1	1	1	1	1
A-32-25076	2	Tube, water inlet (LONG SHAFT)	1	1	1	1	1	1	1	1
C-25-24961	3	Ring, rubber - water inlet tube	1	1	1	1	1	1	1	1
C-26-25192	4	Seal, water inlet tube	1	1	1	1	1	1	1	1
A-23-23651	5	Sleeve, water inlet tube	1	1	1	1	1	1	1	1
A-24945	6	Baffle, exhaust relief (SHORT SHAFT)	1	1	1	1	1	1	1	1
A-27898	6	Baffle, exhaust relief (LONG SHAFT)	1	1	1	1	1	1	1	1
C-10-25255	7	Screw, baffle to drive shaft housing	2	2	2	2	2	2	2	2
A-27-24899	8	Gasket, drive shaft housing to bottom cowl	1	1	1	1	1	1	1	1
C-11-25594	9	Nut, powerhead studs	8	8	8	8	8	8	8	8
C-10-25093	10	Screw, gear housing to drive shaft housing	1	1	1	1	1	1	1	1
A-16-23650	11	Stud, drive shaft housing to gear housing (3/8")	1	1	-	-	-	-	-	-
A-16-29103	11	Stud, drive shaft housing to gear housing (7/16")	1	1	1	1	1	1	1	1
C-11-23161	12	Nut, gear housing and drive shaft housing studs (3/8")	3	3	-	-	-	-	-	-
C-11-22178	12	Nut, gear housing and drive shaft housing studs (7/16")	3	3	3	3	3	3	3	3
A-25190	13	Rod, push - reverse lock (SHORT SHAFT)	1	1	1	1	1	1	1	1
A-28593	13	Rod, push - reverse lock (LONG SHAFT)	1	1	1	1	1	1	1	1
A-17-24887	14	Pin, reverse lock lever	1	1	1	1	1	1	1	1
C-18-25191	15	Cotter Pin, push rod	1	1	1	1	1	1	1	1
A-24-25122	16	Spring, tension - push rod	1	1	1	1	1	1	1	1
A-25140	17	Lever, reverse lock	1	1	1	1	1	1	1	1
A-24926A1	18	Upper Mount Assembly, upper	2	2	2	2	2	2	2	2
A-24935	19	Cover, upper mount - outside half	2	2	2	2	2	2	2	2
A-31120	20	Cover, upper mount - inside half	2	2	2	2	2	2	2	2
A-24929	21	Packing, "U" cup	2	2	2	2	2	2	2	2
C-12-24889	22	Washer, upper mount stud (17/32" I.D.)	2	2	2	2	2	2	2	2
C-12-24891	23	Washer, rubber - upper mount stud	2	2	2	2	2	2	2	2
A-23-30474	24	Spacer, upper mount stud	2	2	2	2	2	2	2	2
C-12-30473	25	Washer, upper mount stud (25/64" I.D.)	2	2	2	2	2	2	2	2
C-11-23161	26	Nut, upper mount stud	2	2	2	2	2	2	2	2
A-25305	27	Cap, rubber - upper mount	2	2	2	2	2	2	2	2
C-10-28772	28	Screw, upper mount cover (1 1/2")	4	4	4	4	4	4	4	4
C-10-29389	29	Screw, upper mount cover (1 7/8")	4	4	4	4	4	4	4	4
C-12-29245	30	Washer, mounting cover screw	8	8	8	8	8	8	8	8
C-11-29322	31	Nut, mounting cover screw	8	8	8	8	8	8	8	8
A-37395	32	Mount, rubber - lower	2	2	2	2	2	2	2	2
C-12-28053	33	Washer, rubber - lower mount	2	2	2	2	2	2	2	2
A-12-28051	34	Washer, lower mount	2	2	2	2	2	2	2	2
C-12-24872	35	Washer, mounting screw (1/16") - Use with A-25178 Bottom Yoke	4	4	4	4	4	4	4	4
C-12-30119	35	Washer, mounting screw (1/8") - Use with A-30202A1 Bottom Yoke	2	2	2	2	2	2	2	2
C-11-25096	36	Nut, mounting screw	2	2	2	2	2	2	2	2
A-10-24874	37	Screw, lower mount (5 1/2")	2	2	2	2	2	2	2	2
A-25067	38	Bumper, rubber - mounting screw	1	1	1	1	1	1	1	1
A-28241	39	Cover, lower mount (port side)	1	1	1	1	1	1	1	1
A-28242	39	Cover, lower mount (starboard side)	1	1	1	1	1	1	1	1
C-12-20084	--	Washer, lower mount cover screw	6	6	-	-	-	-	-	-
C-10-28782	40	Screw, lower mount cover fastening	6	6	-	-	-	-	-	-
C-10-29256	40	Screw, lower mount cover fastening	-	-	6	6	6	6	6	6
C-22-21290	41	Plug, grease - reverse lock hole	1	1	1	1	1	1	1	1

Use thru Serial #1260216

* Started with Serial #1260217

MARK 35AS, MERC 300S AND MERC 350S PARTS LIST

When ordering replacement parts for Mark 35AS, Merc 300S and Merc 350S engines, please order from the preceding pages of this parts list with the following exception:

SERIAL NUMBERS:

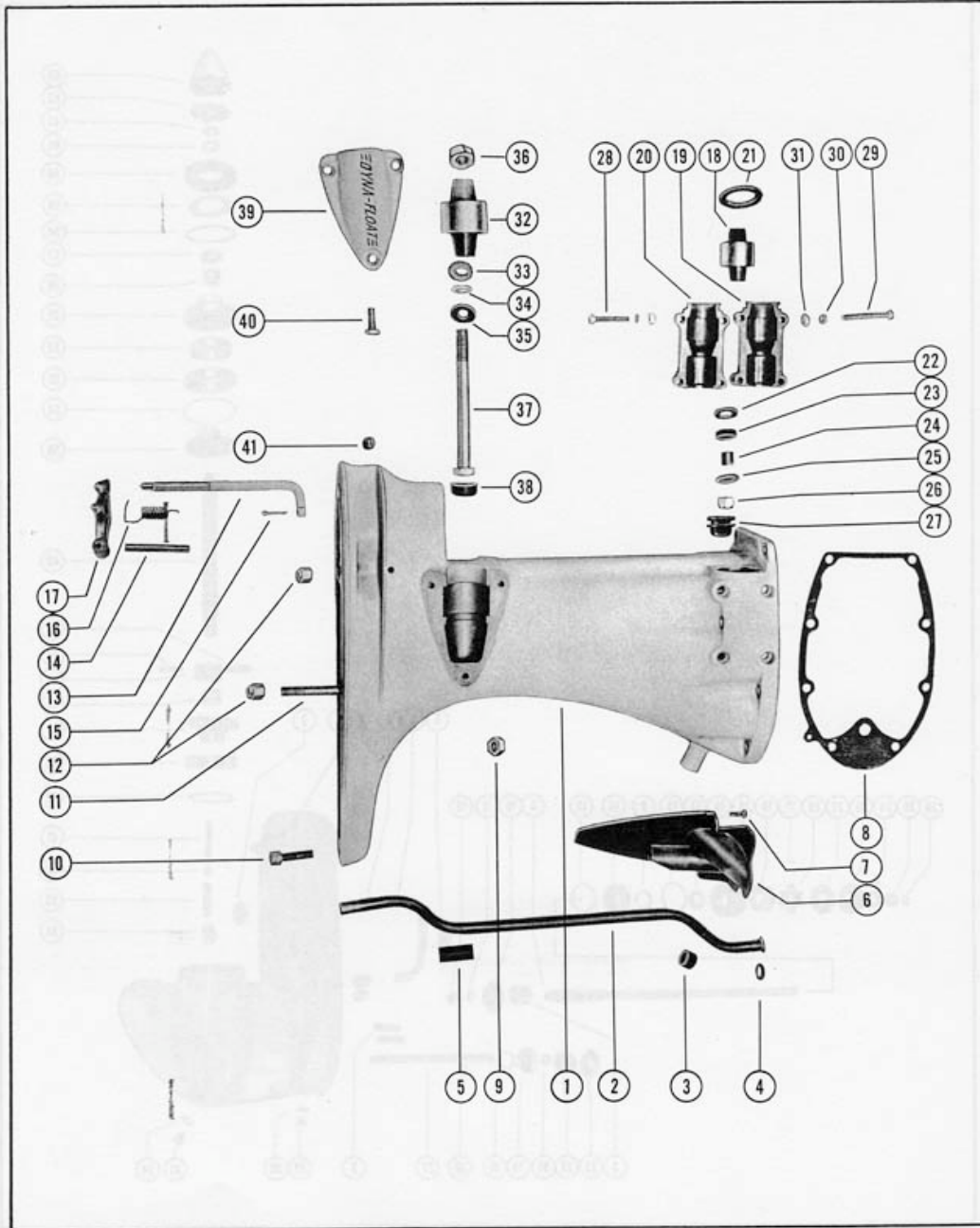
Mark 35AS1219722 thru 1271884
 Merc 300S1287410 thru 1355447

PART NO.	DESCRIPTION	REPLACES	MARK	MERC	MERC	MERC
			35AS	300S	300S	350S
A-211-1483A2	Flywheel Assembly, Complete (with spacer)	A-211-1414A4	01	-	-	-
A-211-1483A1	Flywheel Assembly, Complete (without spacer)	A-211-1414A2	01	-	-	-
A-211-1483A4	Flywheel Assembly, Complete (without spacer)	A-211-1414A7	A1	1	1	1

o Use with A-25942 Starter Motors

▲ Use with A-50-29105 Starter Motor Assembly

DRIVE SHAFT HOUSING ASSEMBLY



Revised March 1966

(MARK 35A, MERC 300, MERC 350)

Page 26

GEAR HOUSING ASSEMBLY

PART NO.	REF. NO.	DESCRIPTION	MARK 35AM	MARK 35AE	MERC 300M	MERC 300E	MERC 350M	MERC 350E	MERC 350M-1
A-1603-930A7	-	#Gear Housing Assembly, Complete (3/8" stud) - SHORT SHAFT	1	1	-	-	-	-	-
A-1603-930A8	-	□Gear Housing Assembly, Complete (3/8" stud) - LONG SHAFT	1	1	-	-	-	-	-
A-1603-1568A4	-	+Gear Housing Assembly, Complete (7/16" stud) - SHORT SHAFT	1	1	-	-	-	-	-
A-1603-1568A5	-	▲Gear Housing Assembly, Complete (7/16" stud) - LONG SHAFT	1	1	-	-	-	-	-
A-1603-1568A8	-	□Gear Housing Assembly, Complete (7/16" stud) - SHORT SHAFT	-	-	1	1	1	1	1
A-1603-1568A9	-	□Gear Housing Assembly, Complete (7/16" stud) - LONG SHAFT	-	-	1	1	1	1	1
A-1603-930A3	1	#Gear Housing Assembly (3/8" stud)	1	1	-	-	-	-	-
A-1603-1568A3	1	+Gear Housing Assembly (7/16" stud)	1	1	1	1	1	1	1
C-16-23071	2	#Stud, gear housing to drive shaft housing (3/8" x 1 7/8")	2	2	-	-	-	-	-
C-16-29078	2	+Stud, gear housing to drive shaft housing (7/16" x 2")	2	2	2	2	2	2	2
C-31-20231	3	Bearing, roller - drive shaft	1	1	1	1	1	1	1
A-32-23652	4	Tube, water inlet - lower	1	1	1	1	1	1	1
A-23-23651	5	Sleeve, water inlet tube	1	1	1	1	1	1	1
■A-26-20232	6	Seal, water tube	3	3	3	3	3	3	3
A-35-23654	7	Screen, water intake - gear housing	1	1	1	1	1	1	1
A-27-31367	-	Gasket, water intake screen to gear housing	1	1	1	1	1	1	1
A-45-29617A1	8	Drive Shaft Assembly (SHORT SHAFT)	1	1	1	1	1	1	1
A-45-29618A1	8	Drive Shaft Assembly (LONG SHAFT)	1	1	1	1	1	1	1
C-53-29116	9	Ring, retaining - ball bearing (25/32" I.D.)	1	1	1	1	1	1	1
C-53-29115	9	Ring, retaining - ball bearing (3/4" I.D.)	1	1	-	-	-	-	-
A-43-20834	10	Gear, pinion	1	1	1	1	1	1	1
C-14-29163	11	Tab Washer, pinion gear screw	1	1	1	1	1	1	1
A-10-20925	12	Screw, pinion gear retaining	1	1	1	1	1	1	1
C-15-20929	13	Shim, ball bearing to drive shaft	*	*	*	*	*	*	*
A-30-20861	14	Bearing, ball - drive shaft	1	1	1	1	1	1	1
■C-25-20266	15	"O" Ring, water pump cartridge	1	1	1	1	1	1	1
A-46-29117A1	16	Water Pump Cartridge Assembly	1	1	1	1	1	1	1
C-26-23300	17	Oil Seal	1	1	1	1	1	1	1
A-28091	18	Insert, water pump cartridge	1	1	1	1	1	1	1
A-28-28657	19	Key, water pump cartridge	1	1	1	1	1	1	1
C-47-20268	20	Impeller, water pump	1	1	1	1	1	1	1
C-17-23733	21	Pin, impeller drive	1	1	1	1	1	1	1
A-20272	22	Plate, outlet - water pump cover	1	1	1	1	1	1	1
A-20270A2	23	Water Pump Cover Assembly	1	1	1	1	1	1	1
C-26-23517	24	Oil Seal	1	1	1	1	1	1	1
■C-25-20273	25	Ring, rubber - centrifugal slinger	1	1	1	1	1	1	1
■C-25-29619	26	"O" Ring, drive shaft - upper	-	-	1	1	1	1	1
C-25136	27	Shaft, shift - lower	1	1	1	1	1	1	1
C-18-20233	28	Clip, retaining - shift shaft	1	1	1	1	1	1	1
C-23-28374A1	29	Bushing Assembly, shift shaft	1	1	1	1	1	1	1
C-26-31249	30	Oil Seal (spring loaded)	1	1	1	1	1	1	1
■C-25-25439	31	"O" Ring, shift shaft bushing	1	1	1	1	1	1	1

NOTE: Check I.D. of ring groove on drive shaft before replacing new retaining ring. Drive shaft on earlier models require the smaller retaining ring (C-53-29115).

* = As Required

Use thru Serial #1231089

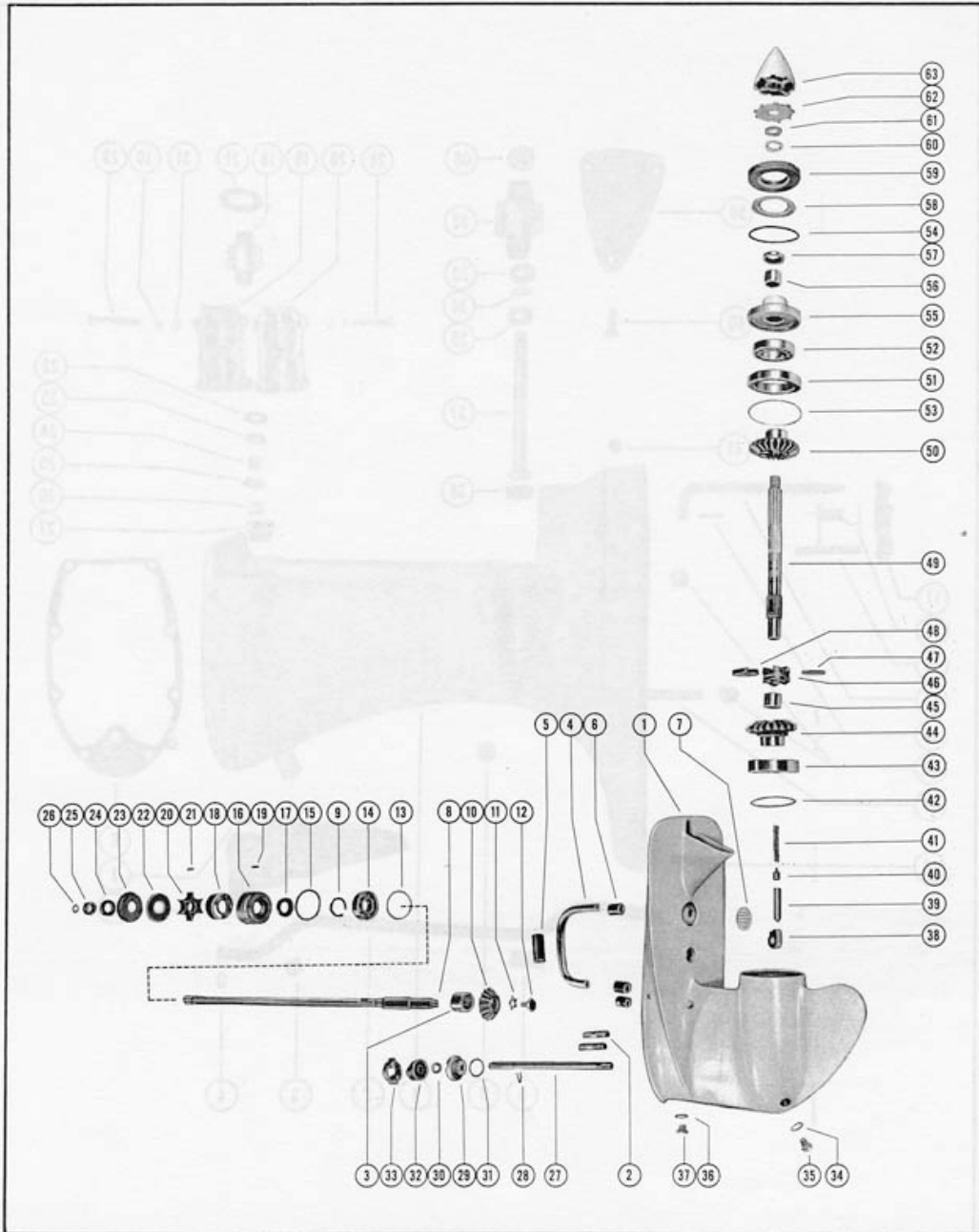
+ Started with Serial #1231090

□ Use thru Serial #1260216

▲ Started with Serial #1260217

(CONTINUED ON PAGE 29)

YJB GEAR HOUSING ASSEMBLY



GEAR HOUSING ASSEMBLY

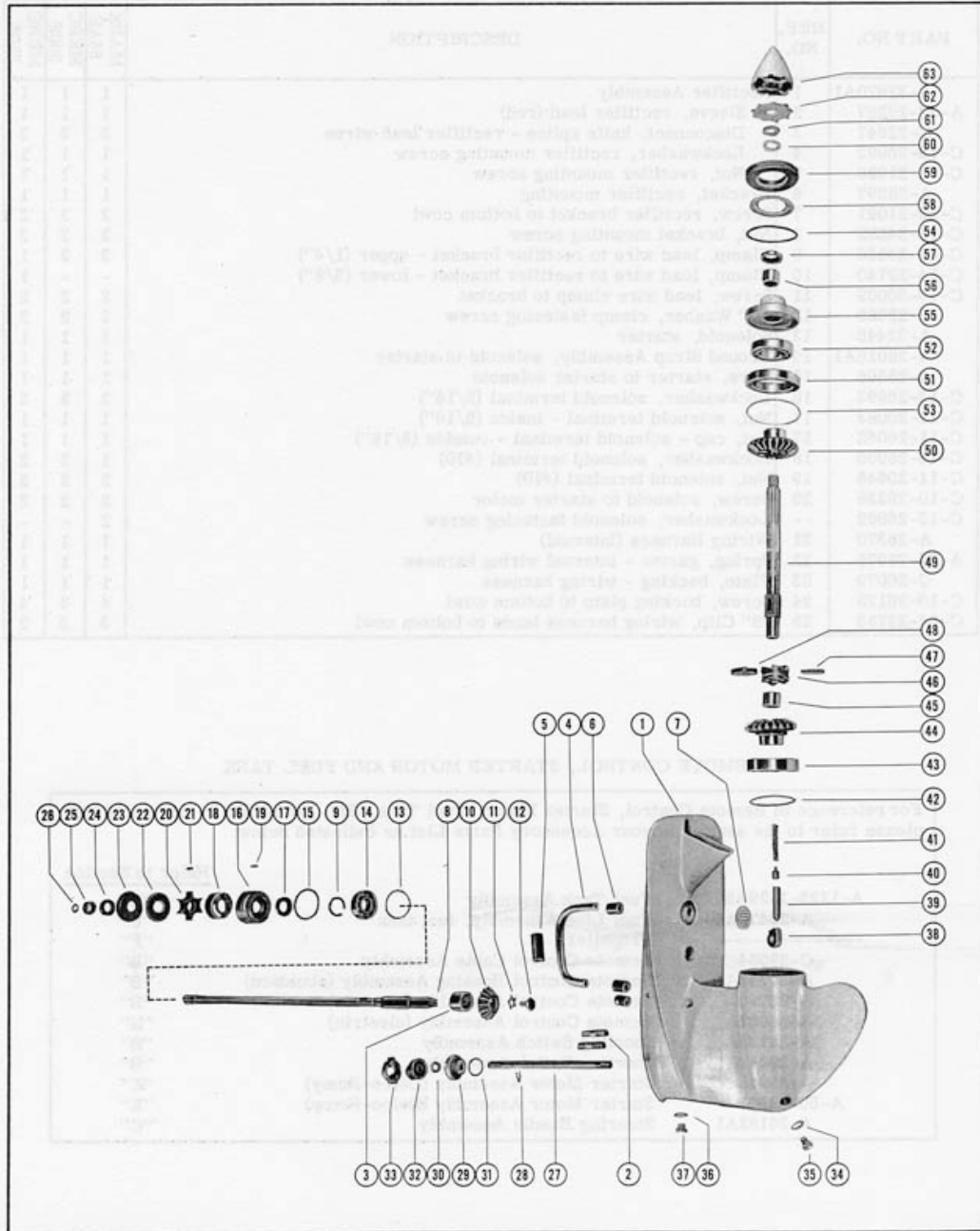
PART NO.	REF. NO.	DESCRIPTION	MARK 35AM	MARK 35AE	MERC 300M	MERC 300E	MERC 350M	MERC 350E	MERC 350M-1
A-25138	32	Cam, lower reverse locking	1	1	1	1	1	1	1
A-25139	33	Cam, upper reverse locking	1	1	-	-	-	-	-
A-29823	33	Cam, upper reverse locking	-	-	1	1	1	1	1
C-12-20260	34	Washer, grease filler and flushing hole screw	2	2	2	2	2	2	2
C-10-28634	35	Screw, grease filler and flushing hole	2	2	2	2	2	2	2
C-12-20262	36	Washer, gear housing vent screw	1	1	1	1	1	1	1
C-10-28653	37	Screw, gear housing vent	1	1	1	1	1	1	1
C-36288	38	Cam, shift	1	1	-	-	-	-	-
C-30147	38	Cam, shift	-	-	1	1	1	1	1
A-20930	39	Follower, cam	1	1	1	1	1	1	1
C-20843	40	Slide, cross pin	1	1	1	1	1	1	1
C-24-20254	41	Spring, cam follower pin	1	1	1	1	1	1	1
C-15-20928	42	Shim, ball bearing to gear housing ---	*	*	*	*	*	*	*
A-43-20975A1	--	Forward Gear Assembly, Complete	1	1	1	1	1	1	1
C-30-20840	43	Bearing, ball - forward gear	1	1	1	1	1	1	1
A-43-20975	44	Forward Gear Assembly	1	1	1	1	1	1	1
C-31-20249	45	Bearing, roller - forward gear	1	1	1	1	1	1	1
A-52-32189	46	Ratchet, sliding clutch	1	1	1	1	1	1	1
C-17-20841	47	Pin, cross - ratchet to propeller shaft	1	1	1	1	1	1	1
C-53-20842	48	Ring, retaining - cross pin	1	1	1	1	1	1	1
A-44-25254	49	Shaft, propeller	1	1	1	1	1	1	1
A-43-20975A2	--	Reverse Gear Assembly, Complete	1	1	1	1	1	1	1
A-43-20975	50	Reverse Gear Assembly	1	1	1	1	1	1	1
A-20864	51	Ring, adaptor - ball bearing	1	1	1	1	1	1	1
C-30-20839	52	Bearing, ball - reverse gear	1	1	1	1	1	1	1
C-15-20927	53	Shim, adaptor ring to gear housing ---	*	*	*	*	*	*	*
A-25-20863	54	"O" Ring, bearing carrier	1	1	1	1	1	1	1
A-20862A1	55	Bearing Carrier Assembly	1	1	1	1	1	1	1
C-31-20249	56	Bearing, roller	1	1	1	1	1	1	1
C-26-23300	57	Oil Seal	1	1	1	1	1	1	1
A-12-22970	58	Washer, gear housing cover	1	1	1	1	1	1	1
A-20865	59	Cover, gear housing	1	1	1	1	1	1	1
C-12-25251	60	Washer, backing (1/8")	*	*	*	*	*	*	*
A-48-29296A2	--	Propeller Assembly (2 blade - aluminum)	-	-	-	-	1	1	1
C-12-25252	61	Washer, backing (1/32")	1	1	1	1	1	1	1
A-14-25250	62	Tab Washer, propeller nut	1	1	1	1	1	1	1
A-11-20837	63	Nut, propeller (aluminum)	1	1	1	1	1	1	1
A-11-29825	63	Nut, propeller (nylon)	@	@	@	@	@	@	@

* = As Required

@ = Optional

(CONTINUED FROM PAGE 28)

GEAR HOUSING ASSEMBLY



Revised March 1966

(MARK 35A, MERC 300, MERC 350)

Page 30

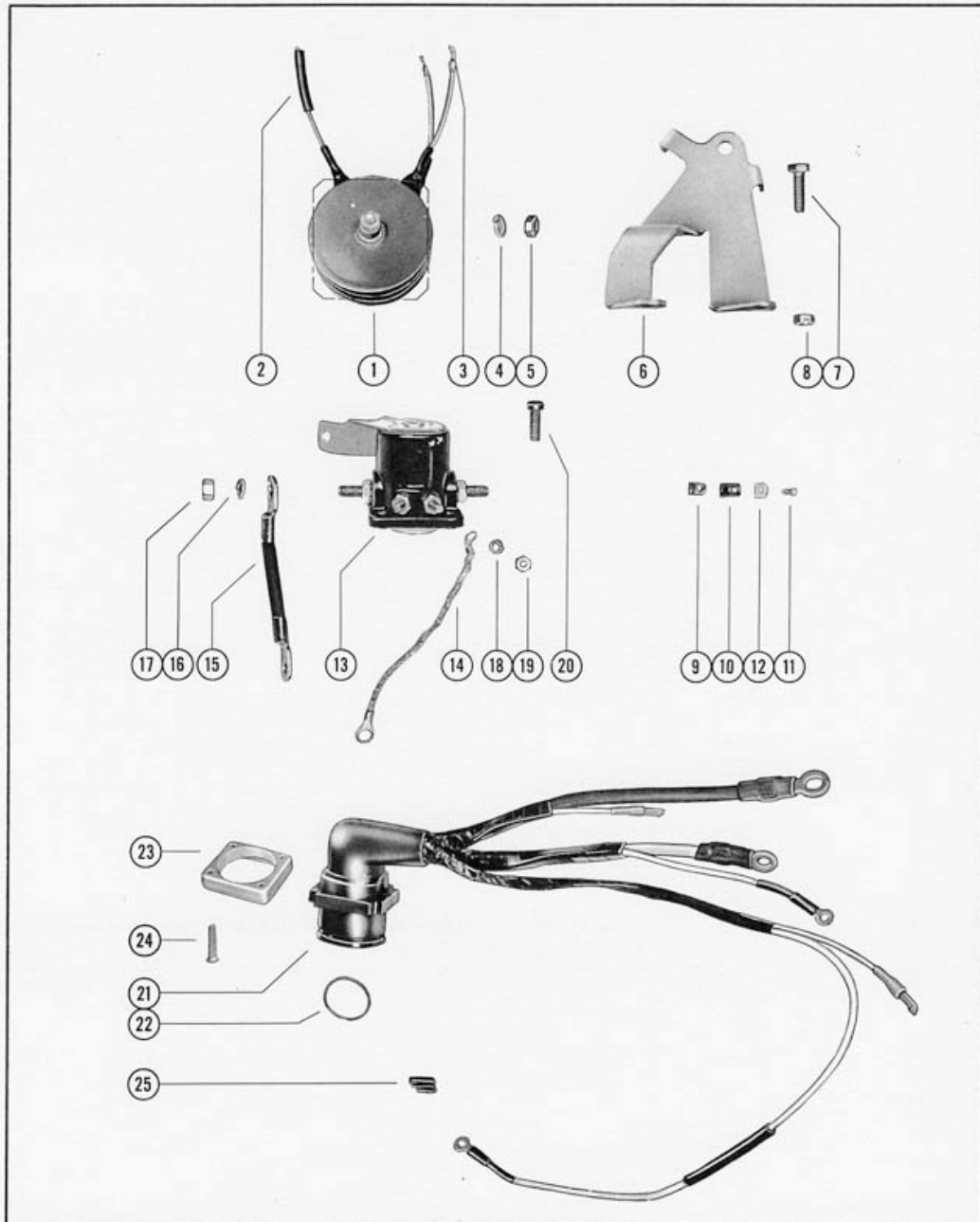
RECTIFIER, STARTER SOLENOID AND WIRING HARNESS

PART NO.	REF. NO.	DESCRIPTION	MARK	MERC	MERC
			35AE	300E	350E
A-32970A1	1	Rectifier Assembly	1	1	1
A-32-29267	2	Sleeve, rectifier lead (red)	1	1	1
C-22647	3	Disconnect, knife splice - rectifier lead wires	3	3	3
C-13-26993	4	Lockwasher, rectifier mounting screw	1	1	1
C-11-21929	5	Nut, rectifier mounting screw	1	1	1
A-28597	6	Bracket, rectifier mounting	1	1	1
C-10-21091	7	Screw, rectifier bracket to bottom cowl	2	2	2
C-11-24652	8	Nut, bracket mounting screw	2	2	2
C-54-24836	9	Clamp, lead wire to rectifier bracket - upper (1/4")	2	2	1
C-54-22740	10	Clamp, lead wire to rectifier bracket - lower (3/8")	-	-	1
C-10-30009	11	Screw, lead wire clamp to bracket	2	2	2
C-22789	12	"D" Washer, clamp fastening screw	2	2	2
A-32445	13	Solenoid, starter	1	1	1
A-28016A1	14	Ground Strap Assembly, solenoid to starter	1	1	1
A-25596	15	Wire, starter to starter solenoid	1	1	1
C-13-26993	16	Lockwasher, solenoid terminal (5/16")	2	2	2
C-11-20083	17	Nut, solenoid terminal - inside (5/16")	1	1	1
C-11-26062	17	Nut, cap - solenoid terminal - outside (5/16")	1	1	1
C-13-26996	18	Lockwasher, solenoid terminal (#10)	1	2	2
C-11-20645	19	Nut, solenoid terminal (#10)	2	2	2
C-10-29238	20	Screw, solenoid to starter motor	2	2	2
C-13-26992	--	Lockwasher, solenoid fastening screw	2	-	-
A-28370	21	Wiring Harness (Internal)	1	1	1
A-24-28975	22	Spring, garter - internal wiring harness	1	1	1
C-26079	23	Plate, backing - wiring harness	1	1	1
C-10-26128	24	Screw, backing plate to bottom cowl	4	4	4
C-54-22783	25	"S" Clip, wiring harness leads to bottom cowl	3	3	2

REMOTE CONTROL, STARTER MOTOR AND FUEL TANK

For reference to Remote Control, Starter Motor, Fuel Tank, Etc. not shown in this parts list, please refer to the section in your Accessory Parts List as indicated below:		
		<u>Refer to Section</u>
A-1225-1529A8	Fuel Tank Assembly	"D"
A-29479A20	Fuel Line Assembly, fuel tank	"D"
-----	Propellers	"F"
C-29564-S	Remote Control Cable Assembly	"B"
A-34741A1	Remote Control Housing Assembly (standard)	"B"
A-26790A__	Remote Control Assembly (electric)	"B"
A-30062A__	Remote Control Assembly (electric)	"B"
A-25763A__	Shorting Switch Assembly	"B"
A-29649A__	Shorting Switch Assembly	"B"
A-25942	Starter Motor Assembly (Delco-Remy)	"E"
A-50-29105	Starter Motor Assembly (Delco-Remy)	"E"
A-36182A1	Steering Handle Assembly	"C"

RECTIFIER, STARTER SOLENOID AND WIRING HARNESS



Revised March 1966

(MARK 35A, MERC 300, MERC 350)

Page 32