

# KF3, KF5 and MARK 5 PARTS LIST

## SERIAL NUMBERS:

Locate the serial number of the motor in the following table and order from the parts list under the column indicated for that serial number.

KF3 . . . . .	358136 thru 358551 358613 thru 358615
KF3-1 . . . . .	358552 thru 360135
KF3-2 . . . . .	374545 thru 375544
KF3-3 . . . . .	414293 and up
KF5 . . . . .	338136 thru 358135 372545 thru 374544 416793 thru 425562
KF5-1 . . . . .	425587 thru 426505
KF5-2 . . . . .	426506 thru 429080 431834 and up
Mark 5 . . . . .	574128 thru 591627 708000 thru 711399 762113 thru 786612

## INDEX:

	<u>Page</u>
Accessories . . . . .	15
Carburetor Assembly . . . . .	5
Choke Assembly, Complete . . . . .	6
Clamp and Swivel Bracket Assembly . . . . .	11
Cowl and Fuel Tank Assembly . . . . .	2
Crankcase and Bearing Housing Assembly . . . . .	9
Crankshaft and Center Main Bearing Assembly . . . . .	8
Cylinder, Crankshaft and Crankcase Assembly (KF3, -1, -2, and -3) . . . . .	10
Cylinder Block Assembly . . . . .	7
Drive Shaft Housing Assembly . . . . .	12
Drive Shaft Housing Assembly (Mark 5) . . . . .	13
Gear Housing Assembly, Complete . . . . .	14
Gear Housing Assembly, Complete (Mark 5) . . . . .	15
Magneto Assembly, Complete (Phelon) . . . . .	3
Magneto Assembly, Complete (Scintilla K1-6, K2A-3 and K2A-201) . . . . .	4
Neutral Lever Assembly . . . . .	1
Piston and Connecting Rod Assembly . . . . .	8
Starter Assembly . . . . .	1
Steering Handle Bracket Assembly . . . . .	11

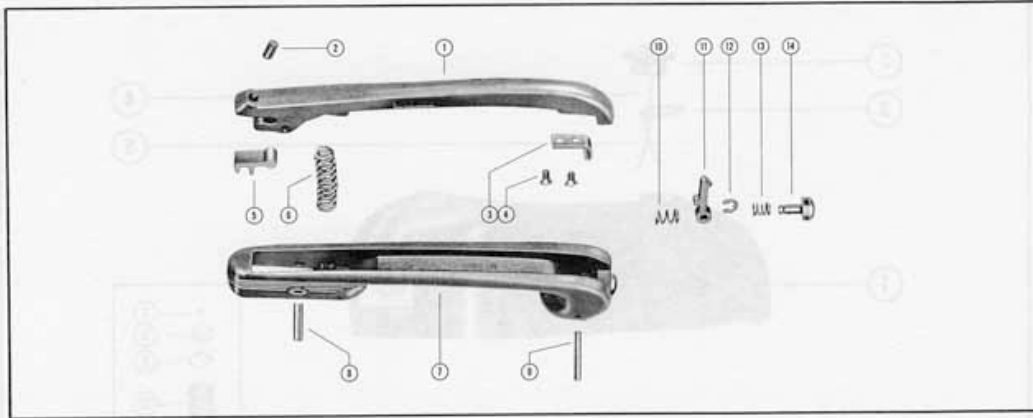
NEUTRAL LEVER ASSEMBLY

PART NO.	REF. NO.	DESCRIPTION	KF3	KF 3-1	KF 3-2	KF 3-3	KF5	KF 5-1	KF 5-2	MK5
24195A1	1	Neutral Lever Assembly	-	-	-	-	-	-	-	1
10-24229	2	Screw, neutral lever adjusting	-	-	-	-	-	-	-	1
24196	3	Catch, finger release	-	-	-	-	-	-	-	1
10-22379	4	Screw, release finger catch	-	-	-	-	-	-	-	2
24197	5	Yoke, neutral lever adjusting	-	-	-	-	-	-	-	1
24-24199	6	Spring, neutral lever	-	-	-	-	-	-	-	1
24189	7	Body, auxiliary handle	-	-	-	-	-	-	-	1
17-24198	8	Pin, roll - auxiliary handle to neutral lever	-	-	-	-	-	-	-	1
17-24192	9	Pin, roll - auxiliary handle to release finger	-	-	-	-	-	-	-	1
24-24191	10	Spring, release finger	-	-	-	-	-	-	-	1
24190	11	Finger, release	-	-	-	-	-	-	-	1
53-21058	12	"E" Ring, release button retaining	-	-	-	-	-	-	-	1
24-24194	13	Spring, release button	-	-	-	-	-	-	-	1
24193	14	Button, release	-	-	-	-	-	-	-	1

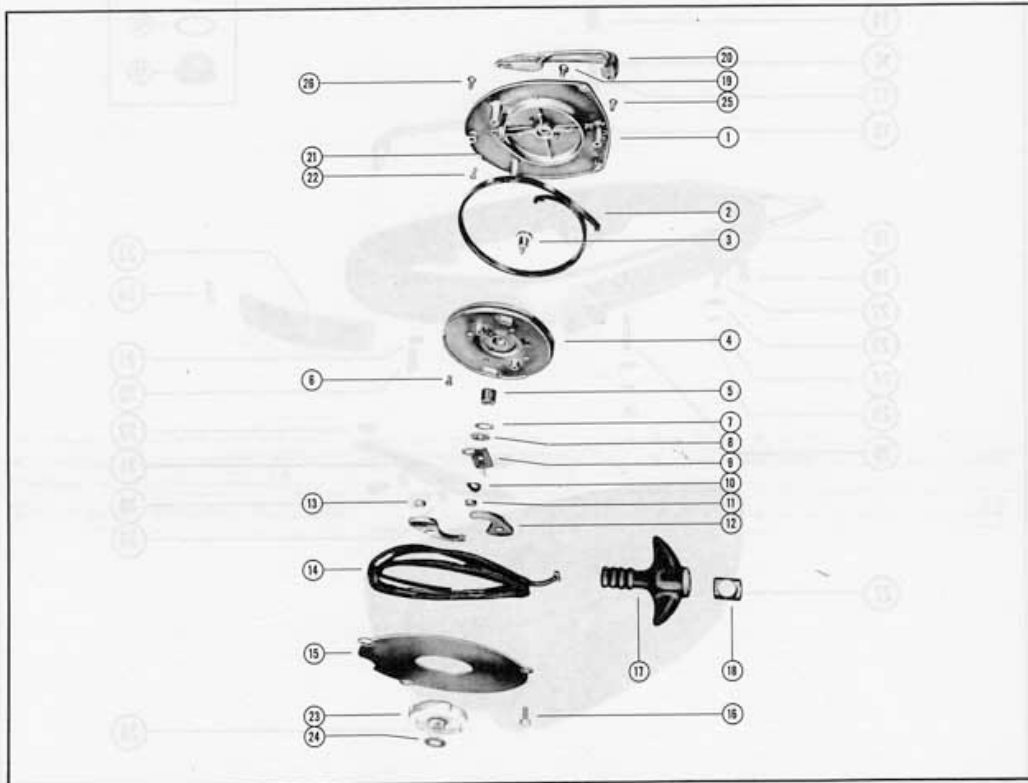
STARTER ASSEMBLY

PART NO.	REF. NO.	DESCRIPTION	KF3	KF 3-1	KF 3-2	KF 3-3	KF5	KF 5-1	KF 5-2	MK5
24091A2	-	Starter Assembly, Complete	1	1	1	1	1	1	1	-
24080A2	1	Starter Cover Assembly	1	1	1	1	1	1	1	-
143-768A1	1	Starter Cover Assembly	-	-	-	-	-	-	-	1
17-22439	-	Pin, spring anchor	1	1	1	1	1	1	1	-
17-24198	-	Pin, spring anchor	-	-	-	-	-	-	-	1
17-20563	-	Pin, sheave shaft retaining	1	1	1	1	1	1	1	1
24-24081	2	Spring, starter	1	1	1	1	1	1	1	1
24170	3	Shaft, starter sheave	1	1	1	1	1	1	1	1
24080A5	4	Starter Sheave Assembly	1	1	1	1	1	1	1	1
17-24171	-	Pin, retainer	1	1	1	1	1	1	1	1
17-20564	-	Pin, spring anchor	1	1	1	1	1	1	1	1
24078	5	Thread Guide	2	2	2	2	2	2	2	2
10-24776	6	Screw, sheave reinforcing	2	2	2	2	2	2	2	2
15-20767	7	Shim, sheave shaft (.010)	1	1	1	1	1	1	1	1
12-24172	8	Washer, sheave shaft	1	1	1	1	1	1	1	1
24085	9	Retainer, starter pawl	1	1	1	1	1	1	1	1
13-20511	10	Washer, wave - starter pawl	1	1	1	1	1	1	1	1
24169	11	Collar, sheave shaft	1	1	1	1	1	1	1	1
24181A1	12	Starter Pawl Assembly	2	2	2	2	2	2	2	2
20793	13	Magnet, starter pawl	2	2	2	2	2	2	2	2
22681A1	14	Starter Cable Assembly	1	1	1	1	1	1	1	1
24082	15	Plate, friction	1	1	1	1	1	1	1	1
10-22491	16	Screw, friction plate to cover	3	3	3	3	3	3	3	3
20171	17	Handle, starter cable	1	1	1	1	1	1	1	1
24804	18	End Cap, starter handle	1	1	1	1	1	1	1	1
10-20778	19	Screw, sheave shaft to cover	1	1	1	1	1	1	1	1
24168	20	Auxiliary Handle, starter cover	1	1	1	1	1	1	1	-
13-26996	21	Lockwasher, auxiliary handle screw	4	4	4	4	4	4	4	-
10-20411	22	Screw, auxiliary handle	4	4	4	4	4	4	4	4
24084	23	Ratchet, starter	1	1	1	1	-	-	-	-
22680	23	Ratchet, starter	-	-	-	-	1	1	1	1
12-20959	24	Washer, starter ratchet (optional)	-	-	-	-	1	1	1	1
10-24645	25	Screw, starter cover to tank (front)	-	-	-	2	2	2	2	2
10-22390	26	Screw, starter cover to tank (rear)	-	-	-	1	1	1	1	1
24086	--	Plate, auxiliary starter	1	1	1	-	-	-	-	-
10-20401	--	Screw, auxiliary starter plate	3	3	3	-	-	-	-	-
13-26996	--	Lockwasher, auxiliary starter plate screw	3	3	3	-	-	-	-	-
10-22484	--	Screw, starter cover to tank	3	3	3	-	-	-	-	-

### NEUTRAL LEVER ASSEMBLY



### STARTER ASSEMBLY

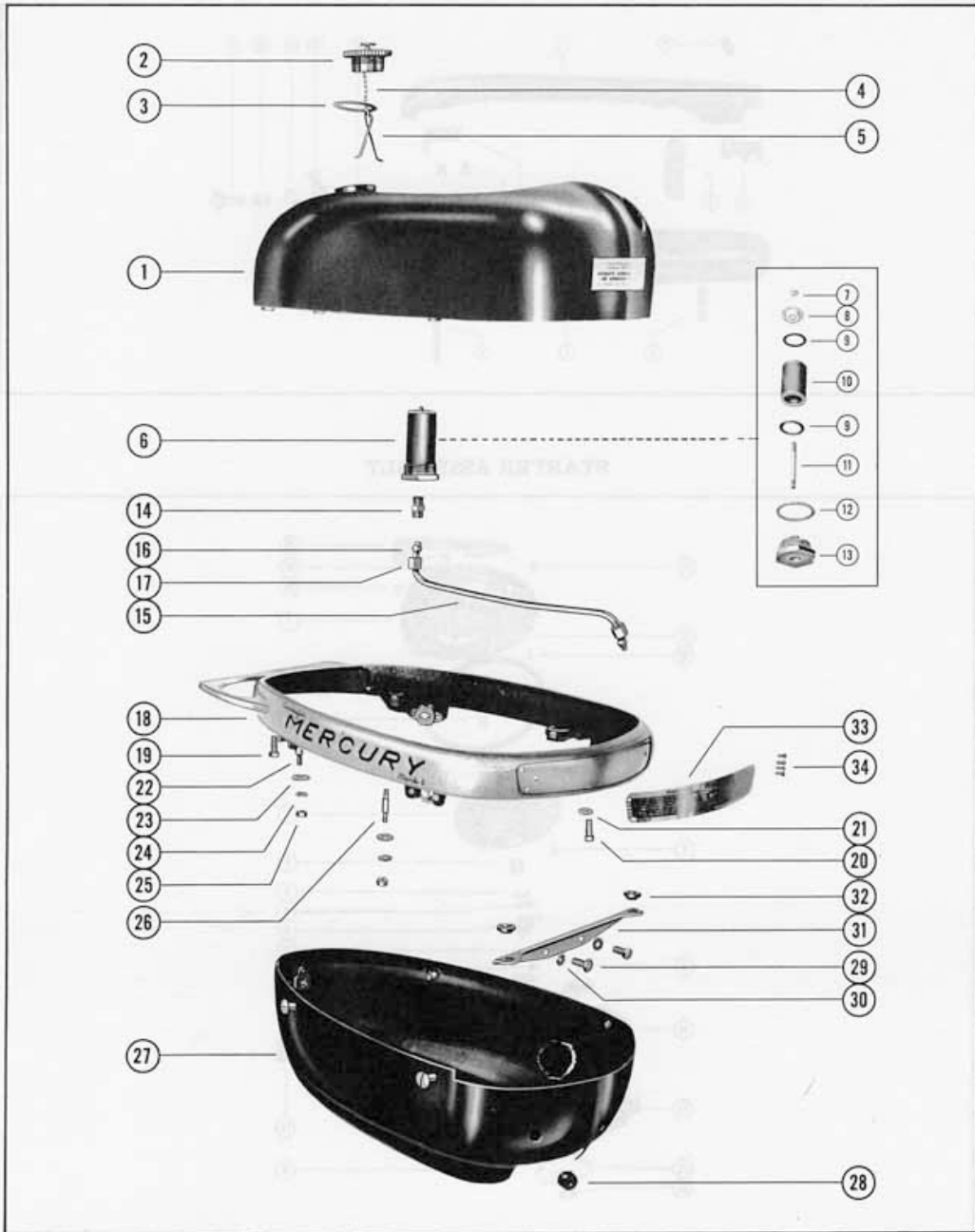


COWL AND FUEL TANK ASSEMBLY

PART NO.	REF. NO.	DESCRIPTION	KF3	KF 3-1	KF 3-2	KF 3-3	KF5	KF 5-1	KF 5-2	MKS
1217-631A1	1	Fuel Tank Assembly	1	1	-	-	-	-	-	-
1218-634A1	1	Fuel Tank Assembly	-	-	1	1	1	1	1	1
23318	-	Cable Guide	1	1	1	1	1	1	1	1
27-23319	-	Gasket, cable guide	1	1	1	1	1	1	1	1
11-23320	-	Nut, cable guide	1	1	1	1	1	1	1	1
36-21317A2	2	Fuel Tank Cap Assembly (1 1/32" opening)	1	1	-	-	-	-	-	-
36-23338A1	2	Fuel Tank Cap Assembly (1 3/32" opening)	-	-	1	1	1	1	1	1
27-21544	3	Gasket, fuel tank cap (for 36-21317A2)	1	1	-	-	-	-	-	-
27-23331	3	Gasket, fuel tank cap (for 36-23338A1)	-	-	1	1	1	1	1	1
36-23589A1	4	Chain and Spring Assembly	1	1	1	1	1	1	1	1
24-23244	5	Spring, fuel tank cap retaining	1	1	1	1	1	1	1	1
27-23245	-	Gasket, fuel tank cap vent screw	1	1	1	1	1	1	1	1
12-26014	-	Washer, fuel tank cap vent screw	1	1	-	-	-	-	-	-
12-20286	-	Washer, fuel tank cap vent screw	-	-	1	1	1	1	1	1
18-20180	-	Cotter Pin, fuel tank cap retainer	1	1	1	1	1	1	1	1
10-23339	-	Screw, vent - fuel tank cap	1	1	1	1	1	1	1	1
35-23262	6	Fuel Filter Assembly	1	1	1	1	1	1	1	1
11-20190	7	Nut, filter stud	1	1	1	1	1	1	1	1
21460	8	End Cap	1	1	1	1	1	1	1	1
12-21464	9	Washer, filter stud	2	2	2	2	2	2	2	2
35-21463	10	Element, filter	1	1	1	1	1	1	1	1
16-21451	11	Stud, filter	1	1	1	1	1	1	1	1
27-23211	12	Gasket, filter to tank	1	1	1	1	1	1	1	1
11-23263	13	Nut, adaptor	1	1	1	1	1	1	1	1
22-23216	14	Connector, fuel line	1	1	1	1	1	1	1	1
32-23341A1	--	Fuel Line Assembly	1	1	1	1	-	-	-	-
32-23341	15	Fuel Line	1	1	1	1	-	-	-	-
32-22682A1	--	Fuel Line Assembly	-	-	-	-	1	1	1	1
32-22682	15	Fuel Line	-	-	-	-	1	1	1	1
23-21309	16	Sleeve, compression - fuel line	2	2	2	2	2	2	2	2
11-21310	17	Nut, compression - fuel line	2	2	2	2	2	2	2	2
23322A1	18	Protector Rim Assembly	1	1	1	1	-	-	-	-
10-21722	19	Screw, protector rim	1	1	1	1	-	-	-	-
12-24668	--	Washer, protector rim screw	1	1	1	1	-	-	-	-
21094A1*	18	Protector Rim Assembly	-	-	-	-	-	-	-	1
23349A1	18	Protector Rim Assembly	-	-	-	-	1	1	1	1
11-22684	--	Nut, spring unit	-	-	-	-	4	4	4	4
17-23336	--	Rivet, nut to protector rim	-	-	-	-	8	8	8	8
10-21722	20	Screw, fuel tank to protector rim	4	4	4	-	4	4	4	4
10-20540	20	Screw, fuel tank to protector rim	-	-	-	4	4	4	4	4
13-24669	21	Lockwasher, protector rim to tank screw	-	-	-	-	2	2	2	2
16-23143	22	Stud, cylinder cover to protector rim	-	-	-	-	2	2	2	2
12-23327	23	Washer, bracket to protector rim (rubber)	-	-	-	-	2	2	2	2
12-24664	24	Washer, protector rim stud	-	-	-	-	2	2	2	2
11-24652	25	Nut, protector rim stud	-	-	-	-	2	2	2	2
16-21718	26	Stud, bracket to protector rim	-	-	-	-	1	1	1	1
108-152A1	27	Cowl Assembly	-	-	-	-	-	-	-	1
108-153A1*	27	Cowl Assembly	-	-	-	-	1	1	1	1
25-22683	28	Grommet, choke rod	-	-	-	-	2	2	2	2
11-22684	--	Nut, spring unit	-	-	-	-	4	4	4	4
17-22685	--	Rivet, nut to cowl	-	-	-	-	2	2	2	2
16-23334	--	Stud (rear)	-	-	-	-	4	4	4	4
16-23335	--	Stud (sides)	-	-	-	-	6	6	6	6
17-23333	--	Pin, cross	-	-	-	-	-	-	-	1
21095*	--	Shield	-	-	-	-	-	-	-	2
25-21099*	--	Grommet, rubber-shield bosses (upper)	-	-	-	-	-	-	-	1
25-20116*	--	Grommet, rubber-shield bosses (lower)	-	-	-	-	-	-	-	2
24-21097*	--	Spring, shield bosses (upper)	-	-	-	-	-	-	-	2
11-21096*	--	Nut, push-on shield bosses	-	-	-	-	-	-	-	2
21098*	--	Bumper, rubber - shield fastening	-	-	-	-	-	-	-	2
131-628	--	Cowl, port side	1	1	1	1	-	-	-	-
132-629	--	Cowl, starboard side	1	1	1	1	-	-	-	-
10-20031	29	Screw, fuel tank mounting bracket	-	-	-	-	2	2	2	2
13-26992	30	Lockwasher, fuel tank bracket screw	-	-	-	-	1	1	1	1
21712	31	Bracket, fuel tank mounting (front)	-	-	-	-	2	2	2	2
23-21717	32	Bushing, bracket to protector rim (front)	-	-	-	-	1	1	1	1
38-23340	33	Serial Plate	1	1	1	1	-	-	-	-
38-23337	33	Serial Plate	-	-	-	-	1	1	1	1
38-23489	33	Serial Plate	4	4	4	4	4	4	4	4
10-20314	34	Screw, drive	6	6	6	6	-	-	-	-
10-22491	--	Screw, protector rim to cowl	6	6	6	6	-	-	-	-
12-24668	--	Washer, protector rim to cowl screw	6	6	6	6	-	-	-	-
10-22038	--	Screw, cowl to cowl	3	3	3	3	-	-	-	-
10-22485	--	Screw, bracket to protector rim	2	2	2	2	-	-	-	-
13-26992	--	Lockwasher, fuel tank to protector rim	6	6	6	6	-	-	-	-
12-20583	--	Washer, bracket rim screw	2	2	2	2	-	-	-	-

\* Latest style Cowl and Protector Rim to incorporate new Mark 5 Shield, 21095.

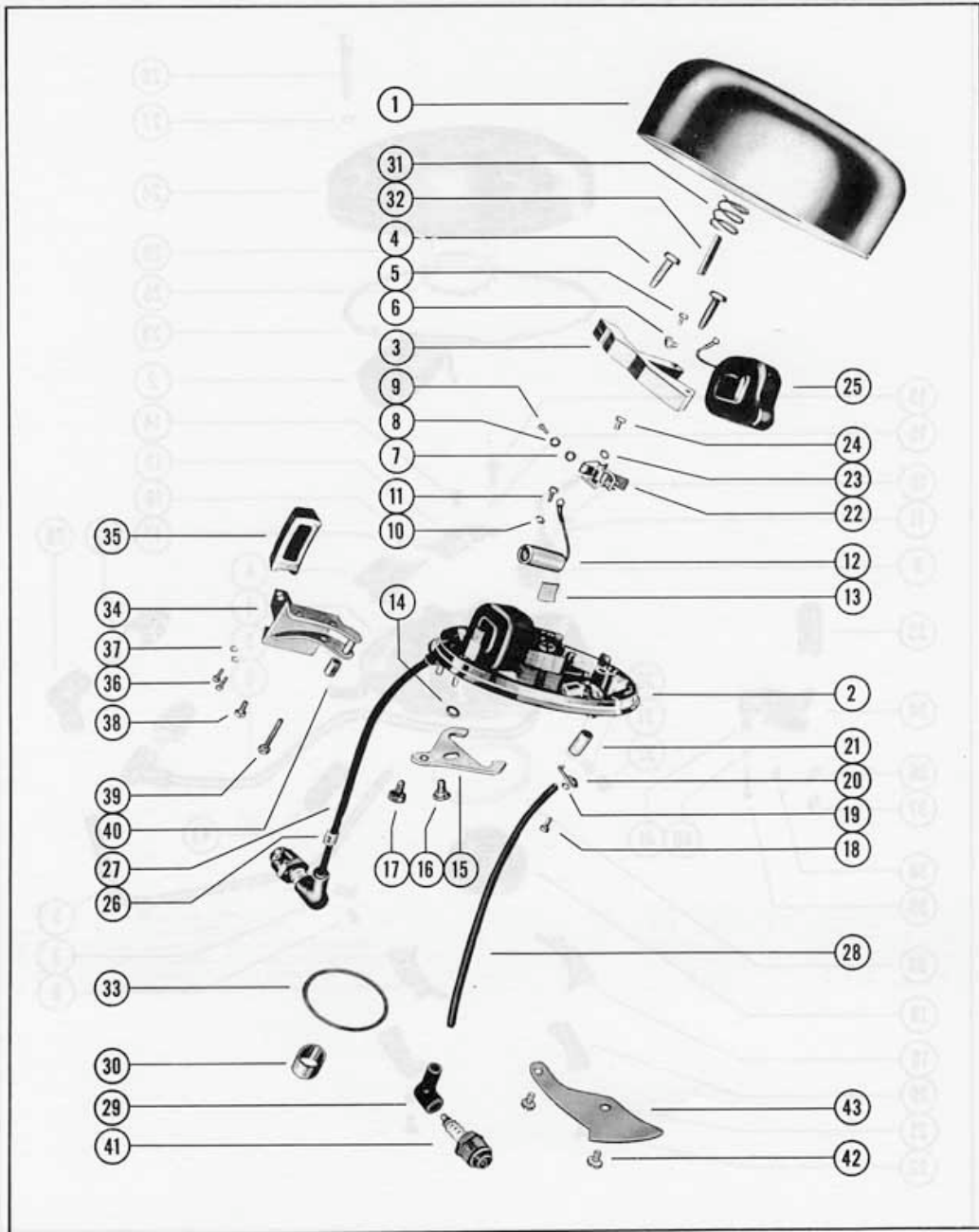
# COWL AND FUEL TANK ASSEMBLY



MAGNETO ASSEMBLY, COMPLETE (PHELON)

PART NO.	REF. NO.	DESCRIPTION	KF 3-3	KF 5-1	KF 5-2	MK5
317-724	-	Magneto Assembly, Complete (Phelon)	1	-	-	-
318-728	-	Magneto Assembly, Complete (Phelon)	-	1	1	-
317-772	-	Magneto Assembly, Complete (Phelon)	-	-	-	1
398-727	1	Flywheel	1	-	-	-
398-691	1	Flywheel	-	1	1	1
398-725A1	2	Stator Plate Assembly	1	-	-	-
398-712A1	2	Stator Plate Assembly	-	1	1	1
398-725	3	Stator and Core	1	-	-	-
398-712	3	Stator and Core	-	1	1	1
10-23556	4	Screw, core fastening	2	4	4	4
10-21130	5	Screw, ground terminal	1	2	2	2
398-732	6	Clip, ground wire	1	2	2	2
398-733	7	Insulator, breaker connection screw	1	2	2	2
12-21135	8	Washer, breaker connection screw	1	2	2	2
10-23976	9	Screw, breaker connection	1	2	2	2
13-21134	10	Lockwasher, condenser attaching screw	1	2	2	2
10-21133	11	Screw, condenser attaching	1	2	2	2
398-713	12	Condenser	1	2	2	2
398-723	13	Felt Wick, cam wiper	1	1	1	-
13-21144	14	Lockwasher, friction clamp stud	2	2	2	2
398-717	15	Clamp, friction	2	2	2	2
16-24450	16	Stud, friction clamp	2	2	2	2
10-23992	17	Screw, friction clamp	2	2	2	2
10-21138	18	Screw, lead wire clamp	1	2	2	2
13-21134	19	Lockwasher, lead wire clamp screw	1	2	2	2
398-720	20	Clamp, lead wire tube	1	1	1	1
32-21137	21	Tube, lead wire	1	2	2	2
398-174	22	Breaker Point Assembly	1	2	2	2
13-21134	23	Lockwasher, fixed contact screw	1	2	2	2
10-21133	24	Screw, fixed contact	1	2	2	2
398-716	25	Coil, ignition 378-173	1	2	2	2
20623	26	Marker, "top" - lead wire	-	1	1	1
398-695	27	Lead, high tension - top	1	1	1	1
398-696	28	Lead, high tension - bottom	-	1	1	1
20119	29	Protector, spark plug	1	2	2	2
398-1033	30	Cam, breaker	1	-	-	-
398-694	30	Cam, breaker	-	1	1	1
24-22677	31	Spring, magneto	-	1	1	1
28-22026	32	Key, flywheel	1	-	-	-
28-22676	32	Key, flywheel	-	1	1	1
15-20626	33	Shim, magneto pilot (.015)	-	1	1	1
13-22027	--	Washer, wave - flywheel	1	-	-	-
24075A1	34	Throttle Handle Assembly	1	-	-	-
22861A1	34	Throttle Handle Assembly	-	1	1	1
24076	35	Knob, throttle handle	1	-	-	-
24167	35	Knob, throttle handle	-	1	1	1
10-22028	36	Screw, throttle handle knob attaching	2	2	2	2
13-26991	37	Lockwasher, throttle handle attaching screw	2	1	1	1
13-22675	37	Lockwasher, throttle handle attaching screw	-	1	1	1
10-20616	38	Screw, throttle handle attaching - short	1	1	1	1
10-24620	39	Screw, throttle handle attaching - long	1	-	-	-
10-22031	39	Screw, throttle handle attaching - long	-	1	1	1
23-23937	40	Spacer, throttle cam	1	-	-	-
23-20618	40	Spacer, throttle cam	-	1	1	1
33-22805	41	Spark Plug	1	2	2	2
10-22028	42	Screw, limit plate	-	-	-	2
22673	43	Plate, limit	-	-	-	1

MAGNETO ASSEMBLY, COMPLETE (PHELON)



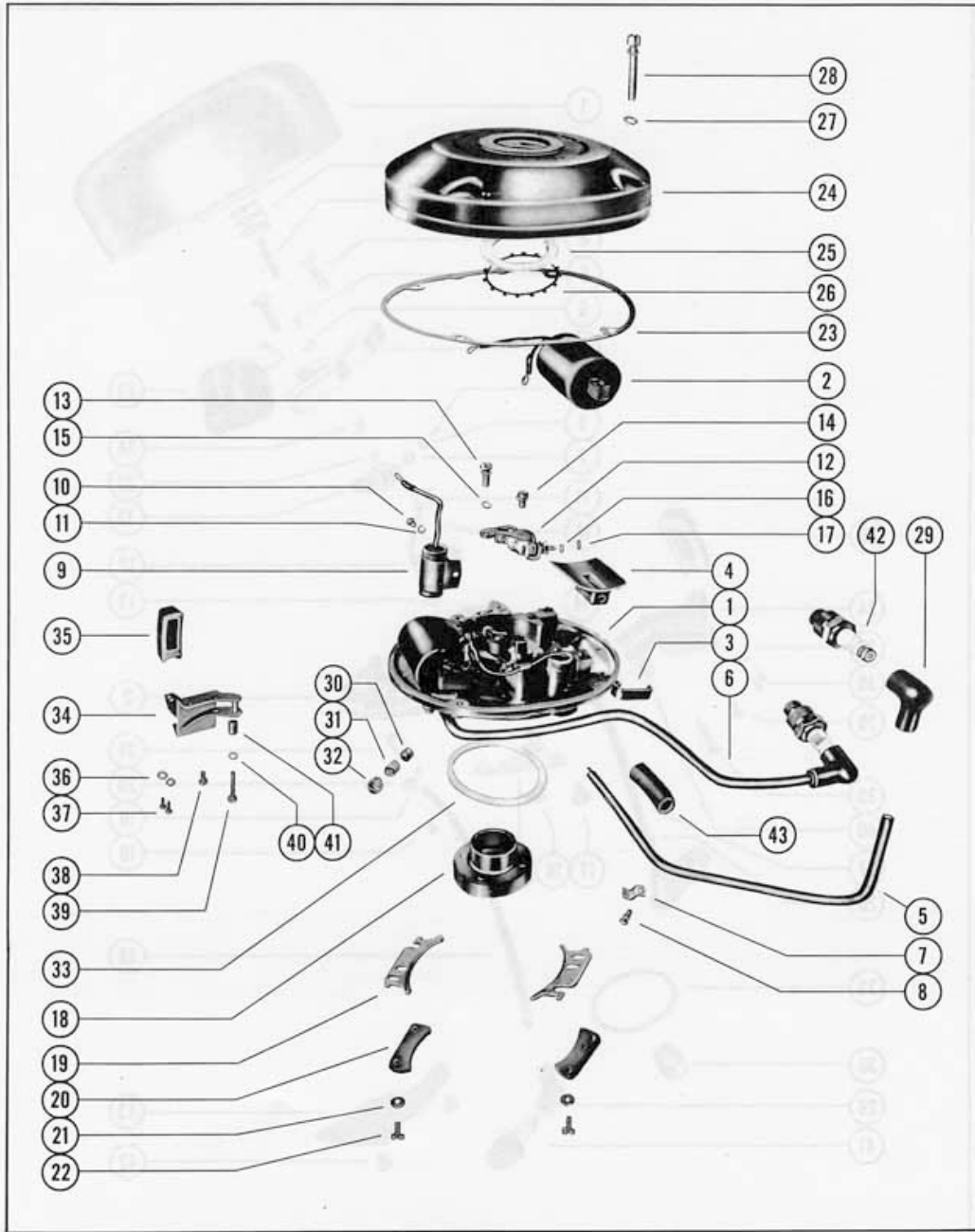
MAGNETO ASSEMBLY, COMPLETE (SCINTILLA)

PART NO.	REF. NO.	DESCRIPTION	KF3	KF 3-1	KF 3-2	KF5 *	KF5 **
312-662	-	Magneto Assembly (Scintilla KI-6)	1	1	1	-	-
321-853A1	-	Magneto Assembly (Scintilla K2A-3)	-	-	-	1	-
399-651	-	Magneto Assembly (Scintilla K2A-201)	-	-	-	-	1
399-663	1	Plate, stator	1	1	1	-	-
399-664	1	Plate, stator	-	-	-	1	-
399-751	1	Plate, stator	1	1	1	-	-
399-756	2	Coil, ignition	1	1	1	2	2
399-126	3	Clamp, coil core fastening	2	2	2	4	4
399-129	4	Insulator, high tension lead	1	1	1	2	2
399-665	5	Lead, high tension - short	1	1	1	1	-
399-757	5	Lead, high tension - short	-	-	-	-	1
399-666	6	Lead, high tension - long	-	-	-	1	-
399-758	6	Lead, high tension - long	-	-	-	-	2
399-130	7	Clamp, high tension lead	1	1	1	2	2
10-20884	8	Screw, high tension lead clamp	1	1	1	2	2
13-26995	-	Lockwasher, high tension clamp screw	1	1	1	2	2
399-123	9	Condenser	1	1	1	2	2
10-20884	10	Screw, condenser attaching	1	1	1	2	2
13-26995	11	Lockwasher, condenser attaching screw	1	1	1	2	2
399-675	12	Breaker Assembly	1	1	1	2	-
399-121A1	12	Breaker Assembly	-	-	-	-	2
10-20884	13	Screw, breaker assembly to stator plate	2	2	2	4	-
13-26995	--	Lockwasher, breaker assembly screw	2	2	2	4	-
10-20879	14	Screw and Lockwasher, breaker assembly to stator plate	-	-	-	-	4
12-20878	15	Washer, breaker assembly screw	1	1	1	2	2
13-24658	16	Lockwasher, primary connector to breaker assembly	1	1	1	2	-
13-20378	16	Lockwasher, primary connector to breaker assembly	-	-	-	-	2
11-20881	17	Nut, primary connector to breaker assembly	1	1	1	2	2
10-20672	--	*Screw, primary connector to stator plate	1	1	1	-	-
13-26995	--	*Lockwasher, primary connector to stator plate screw	1	1	1	-	-
399-669	18	Magnet, rotating	1	1	1	-	-
399-670	18	Magnet, rotating	-	-	-	1	-
399-755	18	Magnet, rotating	-	-	-	-	1
24-23518	19	Spring, stator plate tension	2	2	2	2	-
24-20569	19	Spring, stator plate tension	-	-	-	-	2
399-671	20	Plate, stator plate tension spring	2	2	2	2	-
399-787	20	Plate, stator plate tension spring	-	-	-	-	2
13-26996	21	Lockwasher, stator plate tension screw	4	4	4	4	-
10-24621	22	Screw, stator plate tension	4	4	4	4	-
10-24066	--	Screw and Lockwasher, stator plate tension	-	-	-	-	4
27-20600	23	Gasket, magneto cover	-	-	-	-	1
399-131	24	Cover, magneto	-	-	-	-	1
12-20885	25	Washer, felt - magneto cover	-	-	-	-	1
399-132	26	Ring, lock - magneto cover	-	-	-	-	1
12-20603	27	Washer, magneto cover screw	-	-	-	-	4
10-20602	28	Screw and Lockwasher, magneto cover	-	-	-	-	4
20119	29	Protector, spark plug	1	1	1	2	2
20737	30	Plug, friction screw spring	2	2	2	2	2
24-20609	31	Spring, friction screw	2	2	2	2	2
10-20608	32	Screw, tension	2	2	2	2	2
205-672A1	--	Flywheel Assembly	1	1	1	-	-
205-672A2	--	Flywheel Assembly	-	-	-	1	-
204-455	--	Flywheel	-	-	-	-	1
28-22440	--	Key, flywheel	1	1	1	-	-
28-24065	--	Key, flywheel	-	-	-	1	1
23520	--	Plate, cover	1	1	1	-	-
12-20878	--	Washer, cover plate screw	2	2	2	-	-
10-20597	--	Screw, cover plate	2	2	2	-	-
15-20626	33	Shim, stator plate (.015)	1	1	1	1	1
24075A1	34	Throttle Handle Assembly	1	1	1	-	-
22861A1	34	Throttle Handle Assembly	-	-	-	1	1
24076	35	Knob, throttle handle	1	1	1	-	-
24167	35	Knob, throttle handle	-	-	-	1	1
13-26991	36	Lockwasher, handle attaching screw	2	2	2	2	2
10-22028	37	Screw, throttle handle knob attaching	2	2	2	2	2
10-20616	38	Screw, throttle handle attaching - short	1	1	1	1	1
10-24620	39	Screw, throttle handle attaching - long	1	1	1	-	-
10-22031	39	Screw, throttle handle attaching - long	-	-	-	1	1
13-22675	40	Lockwasher, handle attaching screw	-	-	-	1	1
23-23937	41	Spacer, throttle cam	1	1	1	-	-
23-20618	41	Spacer, throttle cam	-	-	-	1	1
33-22805	42	Spark Plug	1	1	1	2	2
24178	--	Support, cable	-	-	-	1	1
23-23945	43	Bushing, ignition wire	-	-	-	1	1

- \* Use Scintilla Magneto (K2A-3) on all KF5 motors up to Serial #340835.
- \*\* Use Scintilla Magneto (K2A-201) on all KF5 motors from Serial #340836 to #425562.
- # Screw and Lockwasher are used only with coils having primary leads at each end.



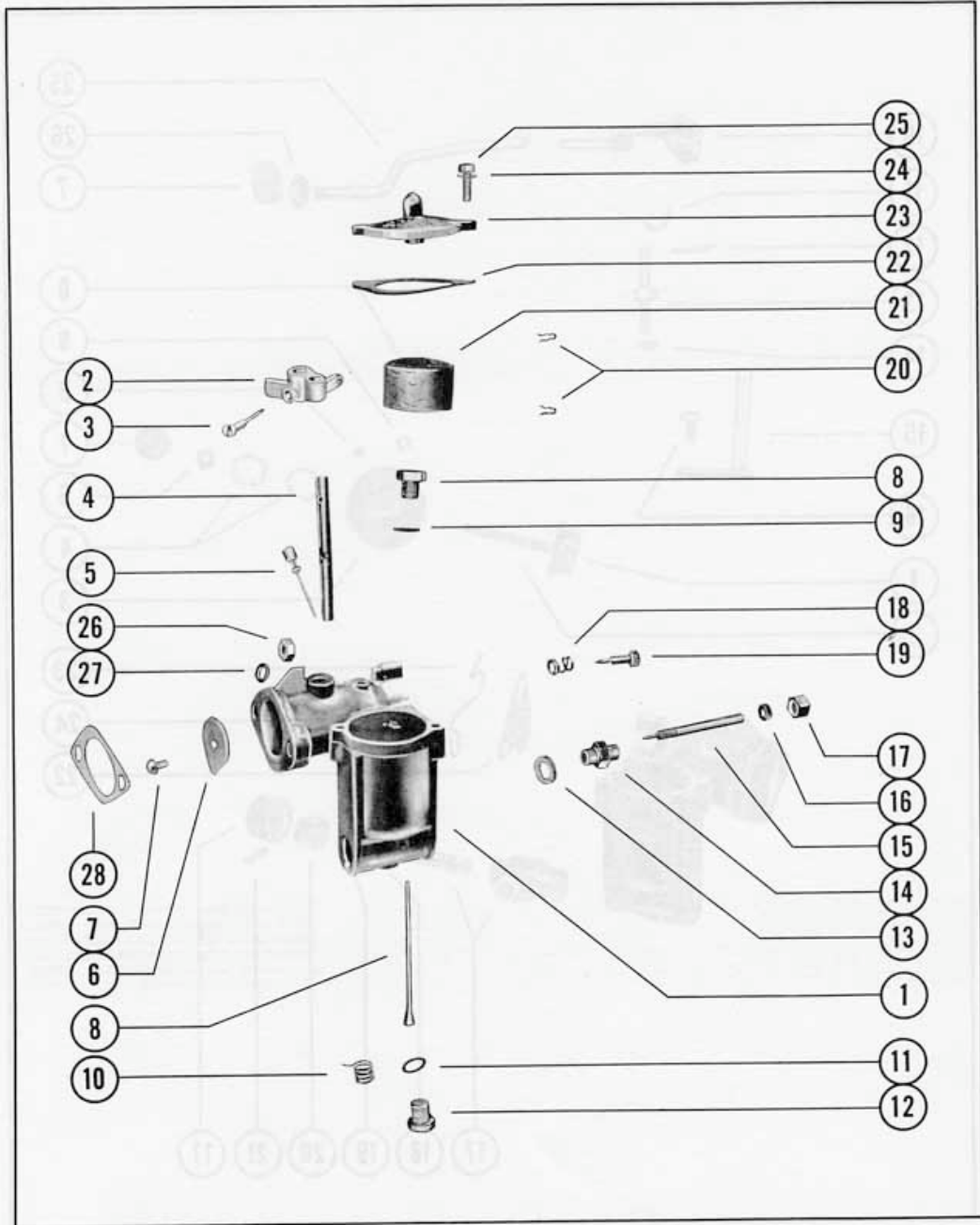
MAGNETO ASSEMBLY, COMPLETE (SCINTILLA)



CARBURETOR ASSEMBLY

PART NO.	REF. NO.	DESCRIPTION	KF3	KF 3-1	KF 3-2	KF 3-3	KF5	KF 5-1	KF 5-2	MK5
1312-578	1	Carburetor Assembly (AJ-10B)	1	1	1	1	-	-	-	-
1315-582	1	Carburetor Assembly (AJ-30A)	-	-	-	-	1	1	1	-
1322-613	1	Carburetor Assembly (AJ-30B)	-	-	-	-	-	-	-	1
1399-97	2	Lever, throttle stop	1	1	1	1	1	1	1	1
10-20847	3	Screw, throttle stop lever	1	1	1	1	1	1	1	1
1399-536	-	Pin, throttle shutter shaft stop	1	1	1	1	-	-	-	-
1399-531	4	Shaft, throttle	1	1	1	1	1	1	1	1
1399-526	5	Jet, idle	1	1	1	1	1	1	1	1
27-23180	-	Gasket, idle jet	1	1	1	1	-	-	-	-
1399-533	6	Shutter, throttle	1	1	1	1	-	-	-	-
1399-699	6	Shutter, throttle	-	-	-	-	1	1	1	1
10-21471	7	Screw and Lockwasher, throttle shutter	1	1	1	1	1	1	1	1
1399-521	8	Inlet Needle and Seat	1	1	1	1	-	-	-	-
1399-586	8	Inlet Needle and Seat	-	-	-	-	1	1	1	1
27-23167	9	Gasket, inlet valve seat	1	1	1	1	-	-	-	-
27-23284	9	Gasket, inlet valve seat	-	-	-	-	1	1	1	1
24-23191	10	Spring, throttle shaft return	1	1	1	1	1	1	1	1
27-23284	11	Gasket, inlet valve channel plug	1	1	1	1	1	1	1	1
10-23030	12	Screw, inlet valve channel plug	1	1	1	1	-	-	-	-
10-23285	12	Screw, inlet valve channel plug	-	-	-	-	1	1	1	1
27-20848	13	Gasket, main adjustment screw gland	1	1	1	1	1	1	1	1
1399-94	14	Gland, main adjustment screw	1	1	1	1	1	1	1	1
10-23264	15	Screw, main adjustment	1	1	1	1	-	-	-	-
10-23286	15	Screw, main adjustment	-	-	-	-	1	1	1	1
1399-108	16	Packing, main adjustment screw	1	1	1	1	1	1	1	1
11-20849	17	Nut, main adjustment screw packing	1	1	1	1	1	1	1	1
24-20856	18	Spring, idle adjustment	1	1	1	1	1	1	1	1
10-23179	19	Screw, idle adjustment	1	1	1	1	-	-	-	-
1399-619	19	Screw, idle adjustment	-	-	-	-	1	1	1	1
18-21579	20	Cotter Pin, float retainer	1	1	1	1	1	1	1	1
1399-570	21	Float, carburetor	1	1	1	1	1	1	1	1
1399-99	22	Gasket, float bowl cover	1	1	1	1	1	1	1	1
1399-598	23	Cover, float bowl	1	1	1	1	-	-	-	-
1399-585	23	Cover, float bowl	-	-	-	-	1	1	1	1
13-26995	24	Lockwasher, float bowl cover screw	2	2	2	2	2	2	2	2
10-20854	25	Screw, float bowl cover	2	2	2	2	1	1	1	1
10-22567	--	Screw, float bowl drain	1	1	1	1	-	-	-	-
27-23184	--	Gasket, float bowl drain screw	1	1	1	1	-	-	-	-
19-20011	--	Welch Plug	1	1	1	1	1	1	1	1
1399-95	--	Lead Shot	-	-	-	-	3	3	3	2
11-20088	26	Nut, carburetor mounting stud	2	2	2	2	-	-	-	-
11-22433	26	Nut, carburetor mounting stud	-	-	-	-	2	2	2	-
11-21825	26	Nut, carburetor mounting stud	-	-	-	-	-	-	-	2
12-20583	27	Washer, carburetor stud	2	2	2	2	2	2	2	2
27-23199	28	Gasket, carburetor flange	1	1	1	1	-	-	-	-
27-22023	28	Gasket, carburetor flange	-	-	-	-	1	1	1	1

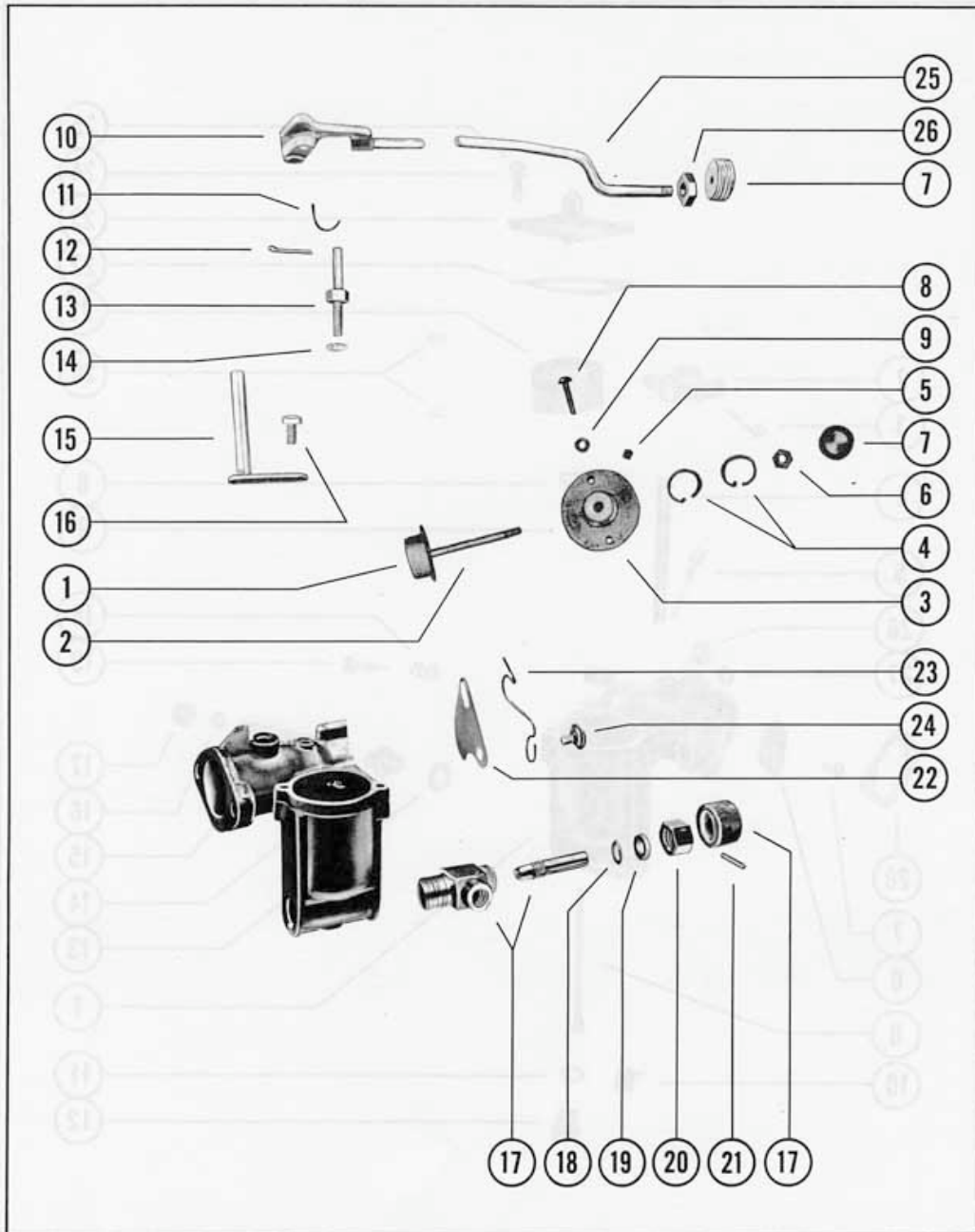
CARBURETOR ASSEMBLY



CHOKE ASSEMBLY (COMPLETE)

PART NO.	REF. NO.	DESCRIPTION	KF3	KF 3-1	KF 3-2	KF 3-3	KF5	KF 5-1	KF 5-2	MK5
23224A6	-	Choke Assembly (Complete)	1	1	1	1	-	-	-	-
23224A5	-	Choke Valve & Rod Assembly	1	1	1	1	-	-	-	-
23224	1	Valve, choke	1	1	1	1	-	-	-	-
23297	2	Rod, choke	1	1	1	1	-	-	-	-
23236	3	Bracket, choke	1	1	1	1	-	-	-	-
24-23228	4	Spring, choke bracket	2	2	2	2	-	-	-	-
17-23229	5	Pin, choke rod	1	1	1	1	-	-	-	-
11-20645	6	Nut, choke knob stop	1	1	1	1	-	-	-	-
23298	7	Knob, choke	1	1	1	1	-	-	-	-
10-24609	8	Screw, choke bracket to carburetor	2	2	2	2	-	-	-	-
13-26995	9	Lockwasher, choke bracket to carburetor screw	2	2	2	2	-	-	-	-
23304A1	10	Choke Lever Assembly	-	-	-	-	1	1	1	-
20178A1	10	Choke Lever Assembly	-	-	-	-	-	-	-	1
17-20648	11	Pin, choke rod retaining	-	-	-	-	1	1	1	1
18-23294	12	Cotter Pin, choke lever retaining	-	-	-	-	4	4	4	1
22454	13	Stud, choke lever	-	-	-	-	2	2	2	1
13-26995	14	Lockwasher, choke lever stud	-	-	-	-	2	2	2	1
22430A1	15	Throttle Lever Assembly	1	1	1	1	-	-	-	-
20596A2	15	Throttle Lever Assembly	-	-	-	-	1	1	1	1
10-20597	16	Screw, throttle lever to carburetor	1	1	1	1	1	1	1	-
10-20566	16	Screw, throttle lever to carburetor	-	-	-	-	-	-	-	1
22665A1	17	Fuel Shut-Off Valve Assembly	1	1	1	1	1	1	1	1
12-22668	18	Washer, packing gland	1	1	1	1	1	1	1	1
22669	19	Packing Gland	3	3	3	3	3	3	3	3
11-22667	20	Nut, gland	1	1	1	1	1	1	1	1
17-22672	21	Pin, valve knob retaining	1	1	1	1	1	1	1	1
23305	22	Shutter, choke	-	-	-	-	1	1	1	-
23310	22	Shutter, choke	-	-	-	-	-	-	-	1
24-23295	23	Spring, choke shutter	-	-	-	-	1	1	1	-
24-23311	23	Spring, choke shutter	-	-	-	-	-	-	-	1
10-20578	24	Screw, choke shutter	-	-	-	-	1	1	1	1
23302	25	Rod, choke	-	-	-	-	1	1	1	-
23312	25	Rod, choke	-	-	-	-	-	-	-	1
11-20645	26	Nut, choke rod stop	-	-	-	-	1	1	1	1
23298	7	Knob, choke	-	-	-	-	1	1	1	-
21093	7	Knob, choke	-	-	-	-	-	-	-	1
23303	--	Equalizer, choke	-	-	-	-	1	1	1	-
23308	--	Detent, choke	-	-	-	-	1	1	1	-
24299	--	Link, choke equalizer	-	-	-	-	1	1	1	-

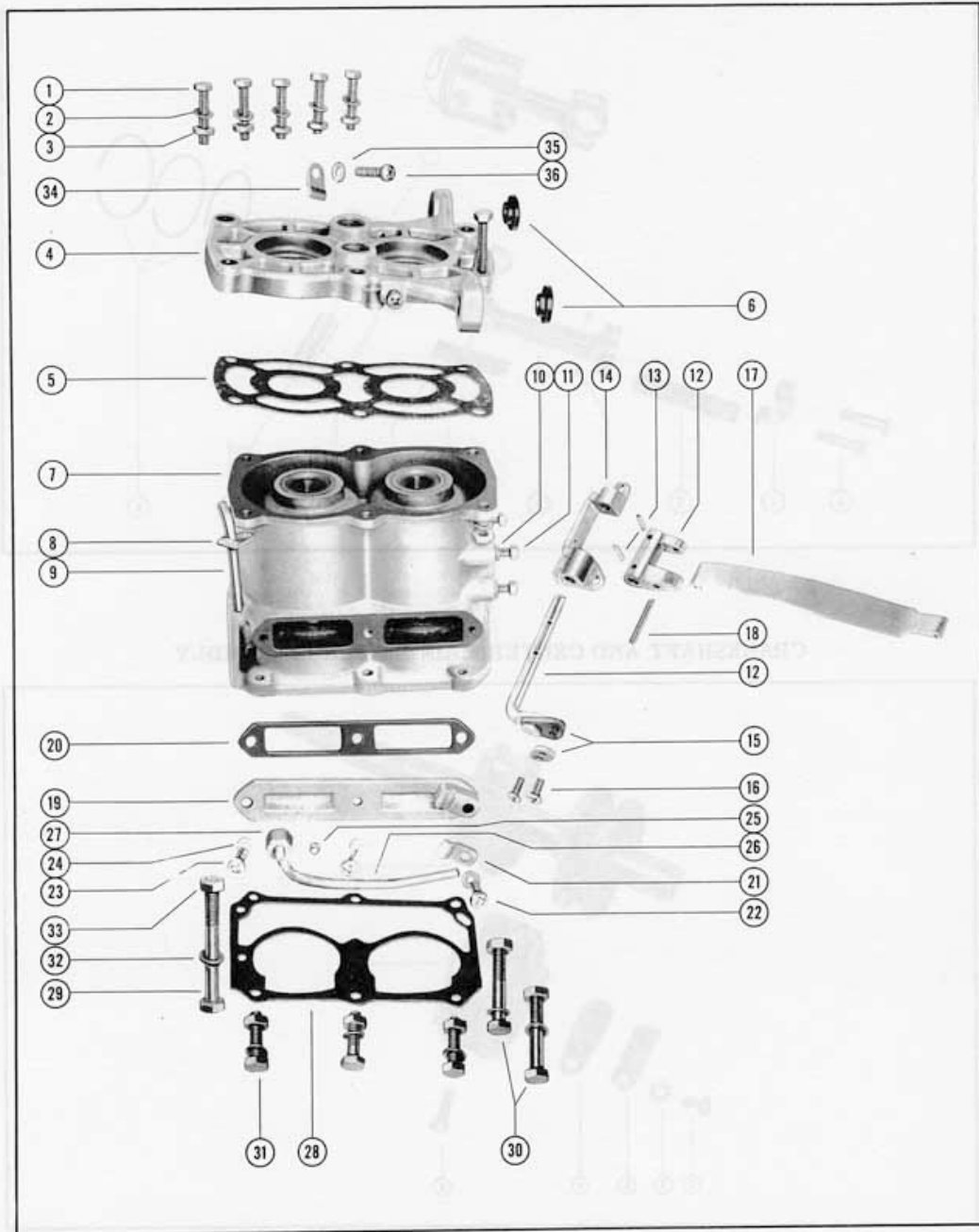
CHOKE ASSEMBLY (COMPLETE)



CYLINDER BLOCK ASSEMBLY

PART NO.	REF. NO.	DESCRIPTION	KF5	KF 5-1	KF 5-2	MK5
10-22387	1	Screw, cylinder block cover	6	6	6	6
12-20128	2	Washer, cylinder block cover screw	6	6	6	6
11-20645	3	Nut, cylinder block cover screw	6	6	6	6
1004-410	4	Cover, cylinder block	1	1	1	1
27-22655	5	Gasket, cylinder block cover	1	1	1	1
23-21717	6	Bushing, cylinder block cover (front)	2	2	2	2
809-380A5	7	Cylinder Block Assembly	1	1	1	1
54-22577	8	Clip, bleeder tube	1	1	1	1
32-22607	9	Tube, bleeder, - cylinder block	1	1	1	1
19-21688	-	Welch Plug (1/2" Diameter)	2	2	2	2
19-22579	-	Welch Plug (3/8" Diameter)	3	3	3	3
13-26996	10	Lockwasher, control bracket screw	-	-	-	3
10-22444	11	Screw, control bracket to cylinder block	-	-	-	3
21000A1	12	Pivot and Link Lever Assembly	-	-	-	1
17-22515	13	Pin, roll - pivot and link lever to bracket	-	-	-	2
20995	14	Bracket, pivot and link lever assembly	-	-	-	1
54-22808	15	Clamp, control cable	-	-	-	1
10-21278	16	Screw, control cable clamp	-	-	-	2
24409	17	Link, clutch control	-	-	-	1
17-24192	18	Pin, roll - clutch control link to lever	-	-	-	1
10-22660	--	Screw, crankcase to cylinder block (3/4")	-	-	-	1
23142	19	Plate, intake cover	1	1	1	-
22608	19	Plate, intake cover	-	-	-	1
27-22656	20	Gasket, intake cover plate	1	1	1	1
54-22517	21	Clip, control cable guide tube	-	-	-	1
10-22657	22	Screw, intake cover plate (long)	-	-	-	1
10-22444	23	Screw, intake cover plate	3	3	3	2
12-20128	24	Washer, intake cover plate screw	3	3	3	3
22322	25	Sleeve, compression	-	-	-	1
32-22585	26	Tubing, control cable guide	-	-	-	1
11-22645	27	Nut, compression	-	-	-	1
27-22518	28	Gasket, crankcase to cylinder block	1	1	1	1
10-22658	29	Screw, crankcase to cylinder block (2 3/8")	1	1	1	1
10-22659	30	Screw, crankcase to cylinder block (1 5/8")	2	2	2	1
10-20663	31	Screw, crankcase to cylinder block (1")	3	3	3	3
12-20583	32	Washer, crankcase to cylinder block screw	7	7	7	6
11-22433	33	Nut, crankcase to cylinder block screw	6	6	6	-
11-21825	33	Nut, crankcase to cylinder block screw	-	-	-	6
54-22595	34	Clip, ignition wire	2	2	2	2
13-26996	35	Lockwasher, clip retaining screw	2	2	2	2
10-22654	36	Screw, clip retaining	2	2	2	2

Y12M CYLINDER BLOCK ASSEMBLY



PISTON AND CONNECTING ROD ASSEMBLY

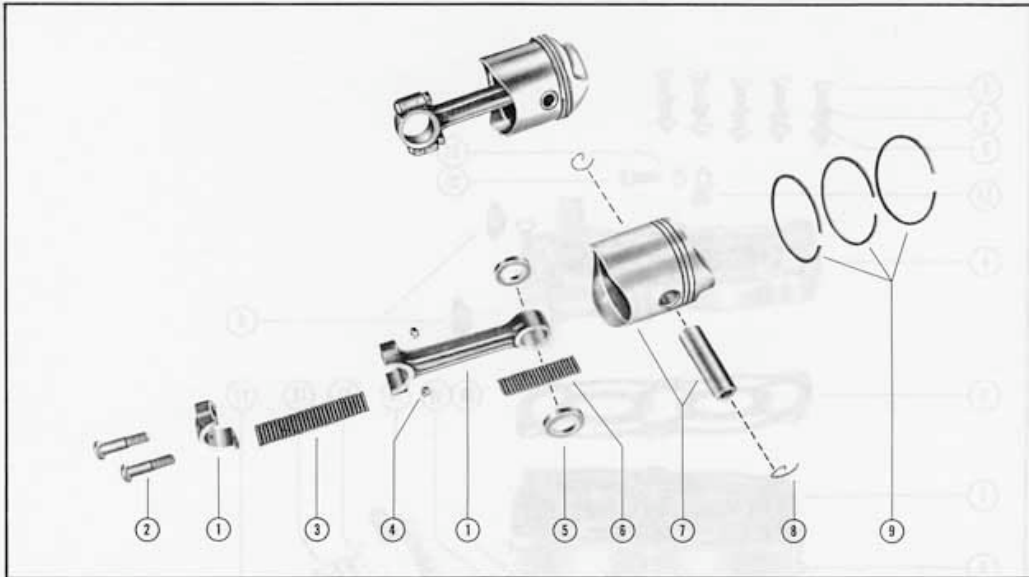
PART NO.	REF. NO.	DESCRIPTION	KF3	KF 3-1	KF 3-2	KF 3-3	KF5	KF 5-1	KF 5-2	MK5
604-338A1	1	Connecting Rod Assembly	1	1	1	-	-	-	-	-
604-337A1	1	Connecting Rod Assembly	-	-	-	1	-	-	-	-
10-22391	2	Screw, connecting rod	2	2	2	2	-	-	-	-
29-21663	3	Needle Bearing, crankpin	28	28	28	28	-	-	-	-
12-24667	5	Washer, needle bearing retaining	-	-	-	2	-	-	-	-
29-21667	6	Needle Bearing, piston pin	-	-	-	20	-	-	-	-
31-21664	-	Roller Bearing, piston pin	1	1	1	-	-	-	-	-
710-489A1	7	Piston and Piston Pin Assembly	1	1	1	-	-	-	-	-
707-446A1	7	Piston and Piston Pin Assembly	-	-	-	1	-	-	-	-
40-21666	8	Lock Ring, piston pin	2	2	2	2	-	-	-	-
39-21665	9	Piston Ring	3	3	3	3	-	-	-	-
605-378A1	1	Connecting Rod Assembly	-	-	-	-	2	2	2	2
10-22590	2	Screw, connecting rod	-	-	-	-	4	4	4	4
29-22591	3	Needle Bearing, crankpin	-	-	-	-	46	46	46	46
11-23118	4	Nut, connecting rod screw	-	-	-	-	4	4	-	-
11-23117	4	Nut, connecting rod screw	-	-	-	-	-	-	4	-
11-20565	4	Nut, connecting rod screw	-	-	-	-	-	-	-	4
14-23116	-	Tab Washer, connecting rod screw	-	-	-	-	-	-	4	-
12-22592	5	Washer, needle bearing retaining	-	-	-	-	4	4	4	4
29-22591	6	Needle Bearing, piston pin	-	-	-	-	34	34	34	34
711-490A1	7	Piston and Piston Pin Assembly	-	-	-	-	2	2	-	-
703-379A1	7	Piston and Piston Pin Assembly	-	-	-	-	-	-	2	2
40-22652	8	Lock Ring, piston pin	-	-	-	-	4	4	4	4
39-22593	9	Piston Ring	-	-	-	-	6	6	6	6

CRANKSHAFT AND CENTER MAIN BEARING ASSEMBLY

PART NO.	REF. NO.	DESCRIPTION	KF3	KF 3-1	KF 3-2	KF 3-3	KF5	KF 5-1	KF 5-2	MK5
409-388	1	Crankshaft	-	-	-	-	1	1	1	1
506-266A1	-	Center Main Bearing Assembly	-	-	-	-	1	1	1	-
511-386	2	Center Main Bearing	-	-	-	-	-	-	-	1
906-266	2	Center Main Bearing	-	-	-	-	1	1	1	-
10-22587	3	Screw, center main bearing clamping	-	-	-	-	1	1	1	1
34-23087	4	Reed Set, matched	-	-	-	-	1	1	1	1
34-21721	5	Plate, reed stop	-	-	-	-	4	4	4	4
12-20128	6	Washer, reed plate screw	-	-	-	-	4	4	4	4
10-21296	7	Screw, reed plate	-	-	-	-	4	4	4	4



PISTON AND CONNECTING ROD ASSEMBLY



CRANKSHAFT AND CENTER MAIN BEARING ASSEMBLY



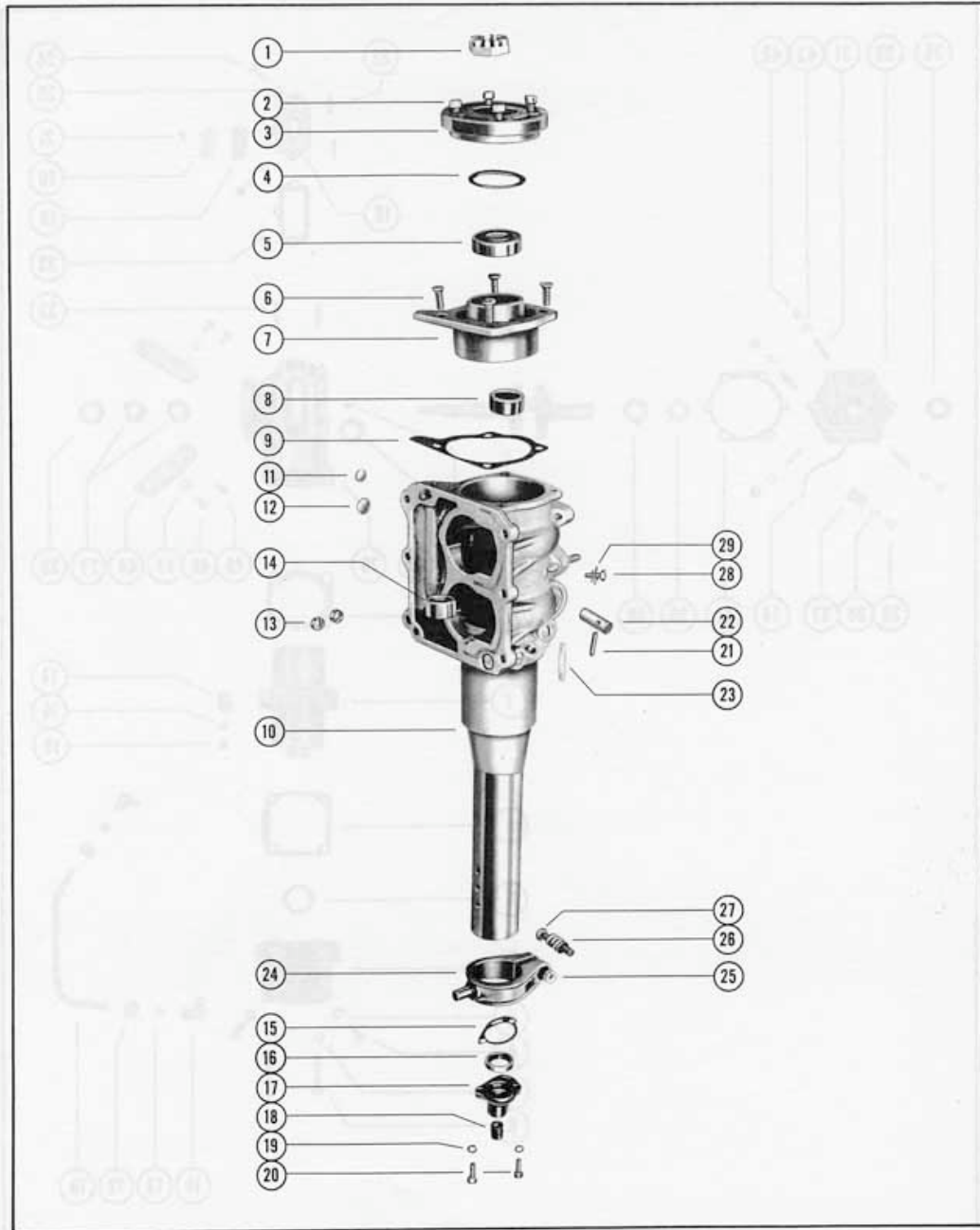
CRANKCASE AND BEARING HOUSING ASSEMBLY

PART NO.	REF. NO.	DESCRIPTION	KF3	KF 3-1	KF 3-2	KF 3-3	KF5	KF 5-1	KF 5-2	MK5
11-21707	1	Nut, bearing lock	-	-	-	-	1	1	1	1
10-22651	2	Screw, bearing housing cap	-	-	-	-	4	4	4	4
1110-265	3	Cap, bearing housing	-	-	-	-	1	1	1	1
12-22646	4	Washer, upper bearing (dished thrust)	-	-	-	-	1	1	1	1
30-21710	5	Bearing, ball - upper bearing housing	-	-	-	-	1	1	1	1
15-20919	-	Shim, bearing to housing (.005)	-	-	-	-	-----as required-----			-
10-22589	6	Screw, upper bearing housing to crankcase	-	-	-	-	4	4	4	4
1121-414A2	7	Bearing Housing Assembly, upper	-	-	-	-	1	1	1	1
31-21638	8	Bearing, roller - upper	-	-	-	-	1	1	1	1
31-21711*	8	Bearing, roller - upper	-	-	-	-	1	-	-	-
27-21708	9	Gasket, upper bearing housing to crankcase	-	-	-	-	1	1	1	1
911-374A3	10	Crankcase Assembly	-	-	-	-	1	1	1	1
17-22642	--	Pin, groove - crankcase to pivot tube	-	-	-	-	2	2	2	2
19-22579	11	Welch Plug (3/8")	-	-	-	-	1	1	1	1
19-21688	12	Welch Plug (1/2")	-	-	-	-	1	1	1	1
22-21290	13	Plug, pipe	-	-	-	-	2	2	2	2
31-22640	14	Bearing, roller - crankcase	-	-	-	-	1	1	1	1
27-21719	15	Gasket, water inlet cap	-	-	-	-	1	1	1	1
26-22580	16	Oil Seal, crankcase	-	-	-	-	1	1	1	1
23103A1	17	Water Inlet Cap Assembly	-	-	-	-	1	1	1	-
22582A1	17	Water Inlet Cap Assembly	-	-	-	-	-	-	-	1
23-22583	18	Bushing, water inlet cap	-	-	-	-	-	-	-	1
13-26996	19	Lockwasher, water inlet cap screw	-	-	-	-	2	2	2	2
10-20411	20	Screw, water inlet cap	-	-	-	-	2	2	2	-
10-20568	20	Screw, water inlet cup	-	-	-	-	-	-	-	2
17-22781	21	Pin, groove - shock absorber to crankcase	-	-	-	-	1	1	1	1
17-23526**	21	Pin, groove - shock absorber to crankcase	-	-	-	-	1	-	-	-
22777	22	Shock Absorber	-	-	-	-	1	1	1	1
16-21723	23	Stud, carburetor mounting	-	-	-	-	2	2	2	2
22726	24	Ring, co-pilot	1	1	1	1	1	1	1	1
11-20890	25	Nut, co-pilot ring	1	1	1	1	1	1	1	1
24-22727	26	Spring, co-pilot ring	1	1	1	1	1	1	1	1
10-22728	27	Screw, co-pilot ring	1	1	1	1	1	1	1	1
10-20665	28	Screw, center main bearing locking	-	-	-	-	1	1	1	1
13-21709	29	Lockwasher, center main bearing locking screw	-	-	-	-	1	1	1	1

\* Use 31-21711, Upper Roller Bearing on all KF5 motors up to Serial #354020.

\*\* Use 17-23526, Groove Pin on all KF5 motors up to Serial #343450.

# CRANKCASE AND BEARING HOUSING ASSEMBLY



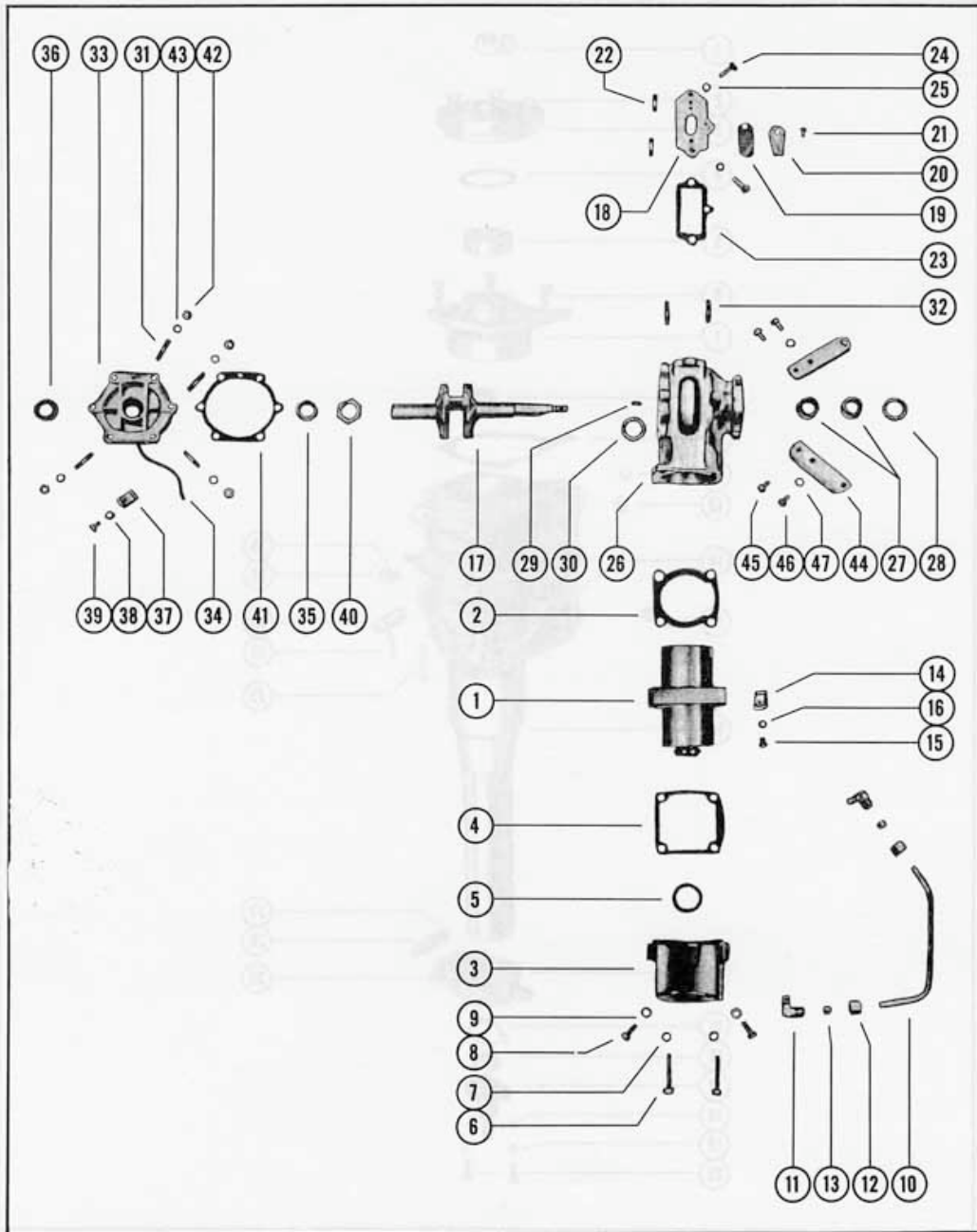
CYLINDER, CRANKSHAFT AND CRANKCASE ASSEMBLY

PART NO.	REF. NO.	DESCRIPTION	KF3	KF 3-1	KF 3-2	KF 3-3
810-458	1	Cylinder	1	1	1	1
27-23036	2	Gasket, cylinder base	1	1	1	1
23037A1	3	Water Jacket	1	1	1	1
27-23044	4	Gasket, water jacket to cylinder	1	1	1	1
27-21682	5	Gasket water jacket to spark plug flange	1	1	1	1
10-21365	6	Screw, water jacket to cylinder	4	4	4	4
12-20583	7	Washer, water jacket to cylinder screw	4	4	4	4
10-22485	8	Screw, water jacket to protector rim	2	2	2	2
13-26992	9	Lockwasher, water jacket to protector rim	2	2	2	2
32-23065	10	Pipe, water outlet	1	1	1	1
22-21684	11	Elbow, water outlet pipe	2	1	1	1
11-21113	12	Nut, compression - water outlet pipe	2	2	2	2
22-21685	13	Sleeve, compression - water outlet pipe	2	2	2	2
19-21688	--	Welch Plug (1/2")	1	1	1	1
54-23135	14	Clip, ignition wire	1	1	1	-
54-22525	14	Clip, ignition wire	-	-	-	1
10-22560	15	Screw, ignition wire clip	-	-	-	1
13-26996	16	Lockwasher, ignition wire clip screw	-	-	-	1
407-268	17	Crankshaft	1	1	1	1
21657A1	--	Reed Valve Body Assembly	1	1	1	1
21657	18	Body, reed valve	1	1	1	1
34-21662	19	Reed, inlet valve	1	1	1	1
34-25454	20	Plate, reed stop	1	1	1	1
10-21296	21	Screw, reed attaching	1	1	1	1
16-21676	22	Stud, reed stop	2	2	2	2
27-21658	23	Gasket, reed valve body	1	1	1	1
10-21636	24	Screw, reed valve body to crankcase	2	2	2	2
12-20583	25	Washer, reed valve body to crankcase	2	2	2	2
909-302A3	26	Crankcase Assembly	1	1	1	1
31-21638	27	Bearing, roller - upper	2	2	2	2
26-26782	28	Oil Seal	1	1	1	1
17-20760	29	Pin, groove	1	1	1	1
12-21736	30	Washer, thrust - upper	1	1	1	1
16-21661	31	Stud, crankcase to crankcase bottom	6	6	6	6
16-21676	32	Stud, carburetor mounting	2	2	2	2
1111-270A2*	--	Crankcase Bottom Assembly	1	-	-	-
1111-270A1	--	Crankcase Bottom Assembly	-	1	1	1
1111-270	33	Crankcase Bottom	1	1	1	1
32-21724	34	Tube, bleed	1	1	1	1
31-21638	35	Bearing, roller - lower	1	1	1	1
26-26782**	36	Oil Seal	1	1	1	1
54-23135	37	Clip, bleed tube	1	1	1	1
13-22773	38	Lockwasher, bleed tube clip	1	1	1	1
10-24639	39	Screw, bleed tube clip	1	1	1	1
24293	--	Plate, housing to crankcase	1	-	-	-
22-21684	--	Elbow, water outlet tube	1	-	-	-
12-21725	40	Washer, thrust - crankcase bottom	1	1	1	1
27-21674	41	Gasket, crankcase bottom	1	1	1	1
11-22433	42	Nut, crankcase stud	6	6	6	6
12-20583	43	Washer, crankcase stud	6	6	6	6
21659	44	Bracket, crankcase to fuel tank	2	2	2	2
10-21140	45	Screw, crankcase to fuel tank bracket	2	2	2	2
10-24640	46	Screw, crankcase to fuel tank bracket	2	2	2	2
13-26992	47	Lockwasher, bracket screw	2	2	2	2

\* This Crankcase Bottom Assembly is not the type originally used on the engine. It is a replacement assembly which will convert the KF3 to the later type crankcase bottom. (Shorter neck, KF3-1, -2, -3)

\*\* If the engine's original crankcase bottom assembly is used, replace the oil seal (26-26782) by oil seal assembly (26-21818A2).

CYLINDER, CRANKSHAFT AND CRANKCASE ASSEMBLY



CLAMP AND SWIVEL BRACKET ASSEMBLY

PART NO.	REF. NO.	DESCRIPTION	KF3	KF 3-1	KF 3-2	KF 3-3	KF5	KF 5-1	KF 5-2	MK5	
1420-791A2	-	Clamp Bracket Assembly, Complete	1	1	-	-	*1	-	-	-	
1420-791A1	1	Clamp Bracket Assembly (starboard)	1	1	-	-	1	-	-	-	
1408-800A1	1	Clamp Bracket Assembly (starboard)	-	-	-	-	-	-	-	1	
1421-792A1	1	Clamp Bracket Assembly (starboard)	-	-	1	1	1	1	1	-	
1419-790A1	2	Clamp Bracket Assembly (port)	1	1	-	-	1	-	-	-	
1407-799A1	2	Clamp Bracket Assembly (port)	-	-	-	-	-	-	-	1	
1422-793A1	2	Clamp Bracket Assembly (port)	-	-	1	1	1	1	1	-	
24357	3	Thumb Screw Assembly	2	2	-	-	2	-	-	-	
24366A1	3	Thumb Screw Assembly	-	-	2	2	2	2	2	2	
12-20214	4	Washer, thumb screw	2	2	2	2	2	2	2	2	
12-20583	-	Washer, thumb screw	-----as required-----								-
1409-427A3	5	Swivel Bracket Assembly	1	1	1	1	1	1	1	1	
23-22701	6	Bushing, co-pilot ring	1	1	1	1	1	1	1	1	
23-22704	7	Shell, upper co-pilot bushing	1	1	1	1	1	1	1	1	
22705	8	Ring, upper co-pilot bushing	1	1	1	1	1	1	1	1	
23-22706	9	Shell, lower co-pilot bushing	1	1	1	1	1	1	1	1	
22707	10	Ring, lower co-pilot bushing (rubber)	1	1	1	1	1	1	1	1	
22709A2	11	Shoe Latch Assembly	1	1	1	1	1	1	1	1	
17-22515	12	Pin, roll	1	1	1	1	1	1	1	1	
24-22711	13	Spring, tilt lock	1	1	1	1	1	1	1	1	
22686	14	Rod, tie	1	1	1	1	1	1	1	1	
13-26992	15	Lockwasher, tie rod screw	2	2	2	2	2	2	2	2	
10-20482	16	Screw, tie rod	2	2	2	2	2	2	2	2	
16-22687	17	Stud, tie	1	1	1	1	1	1	1	1	
11-22046	18	Nut, tie stud (R. H. thread)	1	1	1	1	1	1	1	1	
11-22688	19	Nut, tie stud (L. H. thread)	1	1	1	1	1	1	1	1	
17-22700	20	Pin, swivel bracket to clamp bracket pivot	1	1	1	1	1	1	1	1	
15-24413	--	Shim, clamp bracket to swivel bracket	-	-	-	-	-	-	-	AR	
22699	21	Plate, cover	1	1	1	1	1	1	1	1	

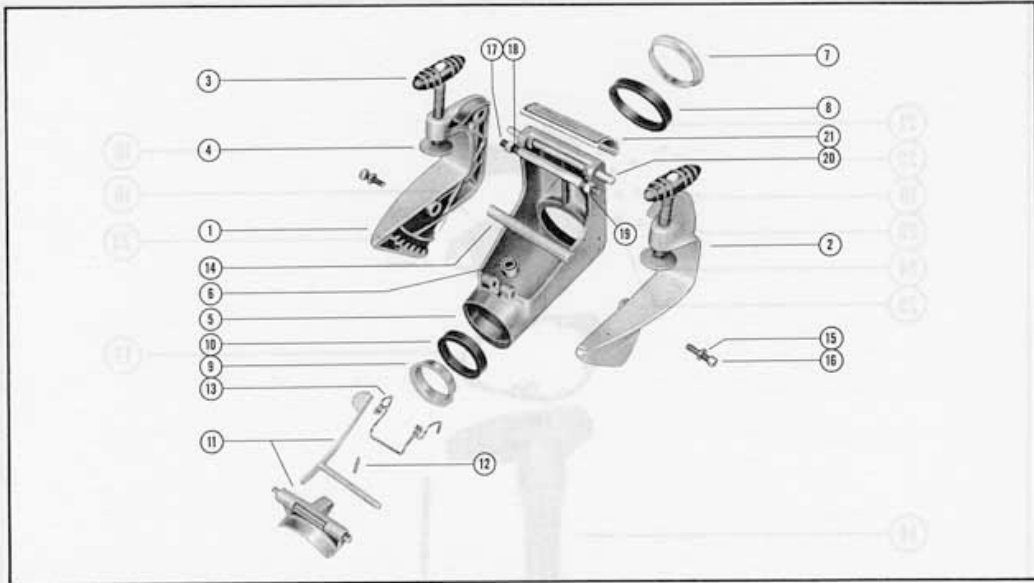
\* Use 1420-791A2, Clamp Bracket Assembly, Complete on all KF5 motors up to Serial #354188.

STEERING HANDLE BRACKET ASSEMBLY

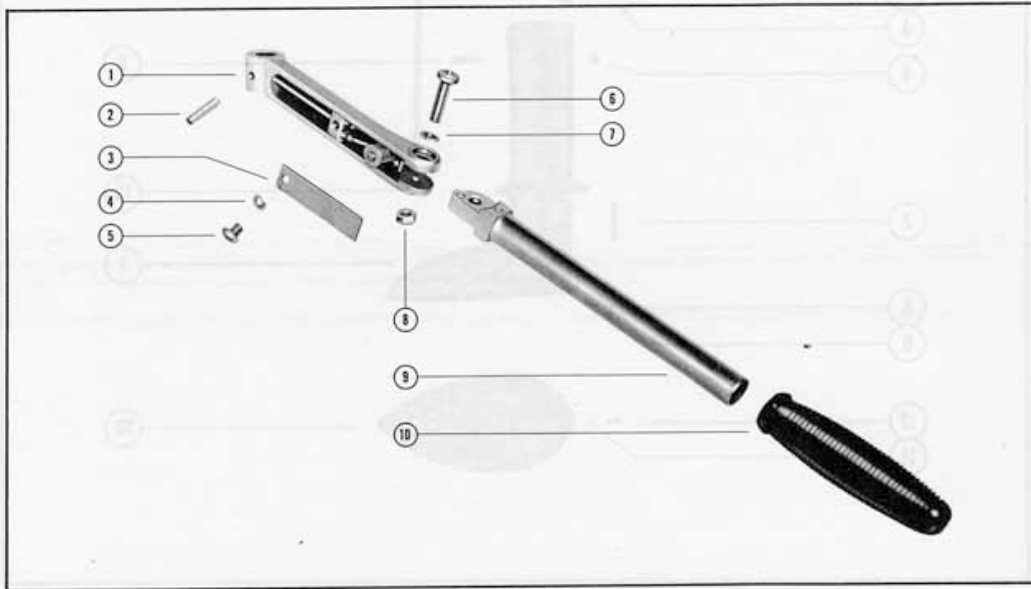
PART NO.	REF. NO.	DESCRIPTION	KF3	KF 3-1	KF 3-2	KF 3-3	KF5	KF 5-1	KF 5-2	MK5
24319A1	1	Steering Handle Bracket Assembly	1	1	-	-	-	-	-	-
22774A2	1	Steering Handle Bracket Assembly	1	1	1	1	1	1	1	1
24319	-	Bracket, steering handle	1	1	1	1	-	-	-	-
17-22780	2	Pin, groove - bracket to shock absorber	1	2	2	1	1	1	1	1
22777	-	Shock Absorber	1	1	1	1	1	1	1	1
17-22781	-	Pin, groove - bracket to shock absorber	1	1	-	1	1	-	-	1
24-22776	3	Spring, handle bracket	1	1	1	1	1	1	1	1
12-20583	4	Washer, spring retaining screw	1	1	1	1	-	-	-	-
10-22491	5	Screw, spring retaining	1	1	1	1	1	1	1	1
24-22775	-	Spring, release rivet	1	1	1	1	1	1	1	1
12-21631	-	Washer, spring release rivet	1	1	1	1	1	1	1	1
17-24321	-	Rivet, spring release	1	1	1	1	-	-	-	-
17-21632	-	Rivet, spring release	1	1	1	1	1	1	1	1
10-22052	6	Screw, bracket to steering handle	1	1	1	1	1	1	1	1
13-26993	7	Lockwasher, bracket to handle screw	1	1	-	-	1	1	1	1
11-22053	8	Nut, bracket to steering handle screw	1	1	-	1	-	1	1	1
10-24322	6	Bolt, bracket to steering handle	1	1	-	-	-	-	-	-
13-26992	7	Lockwasher, handle bracket retaining spring	-	-	-	-	-	1	1	1
11-20509	8	Nut, bracket to handle screw	1	1	-	-	-	-	-	-
11-24649	8	Nut, bracket to handle screw	-	-	1	-	1	-	-	-
21627	9	Handle, steering	1	1	-	-	-	-	-	-
21945	9	Handle, steering	-	-	1	1	1	1	1	1
24324	10	Rubber Grip, steering handle	1	1	1	1	1	1	1	1
24360A1*	--	Steering Handle and Screwdriver Assembly	-	-	-	-	1	-	-	-
23-24361	--	Bushing, steering handle	-	-	-	-	1	-	-	-
24367A2	--	Screwdriver Handle Assembly	-	-	-	-	1	-	-	-
17-24363	--	Pin, groove	-	-	-	-	1	-	-	-

\* This assembly may be used as an accessory replacement on the KF5-1 and 2, if a screwdriver-in-steering handle arrangement is preferred on these models.

### CLAMP AND SWIVEL BRACKET ASSEMBLY



### STEERING HANDLE BRACKET ASSEMBLY



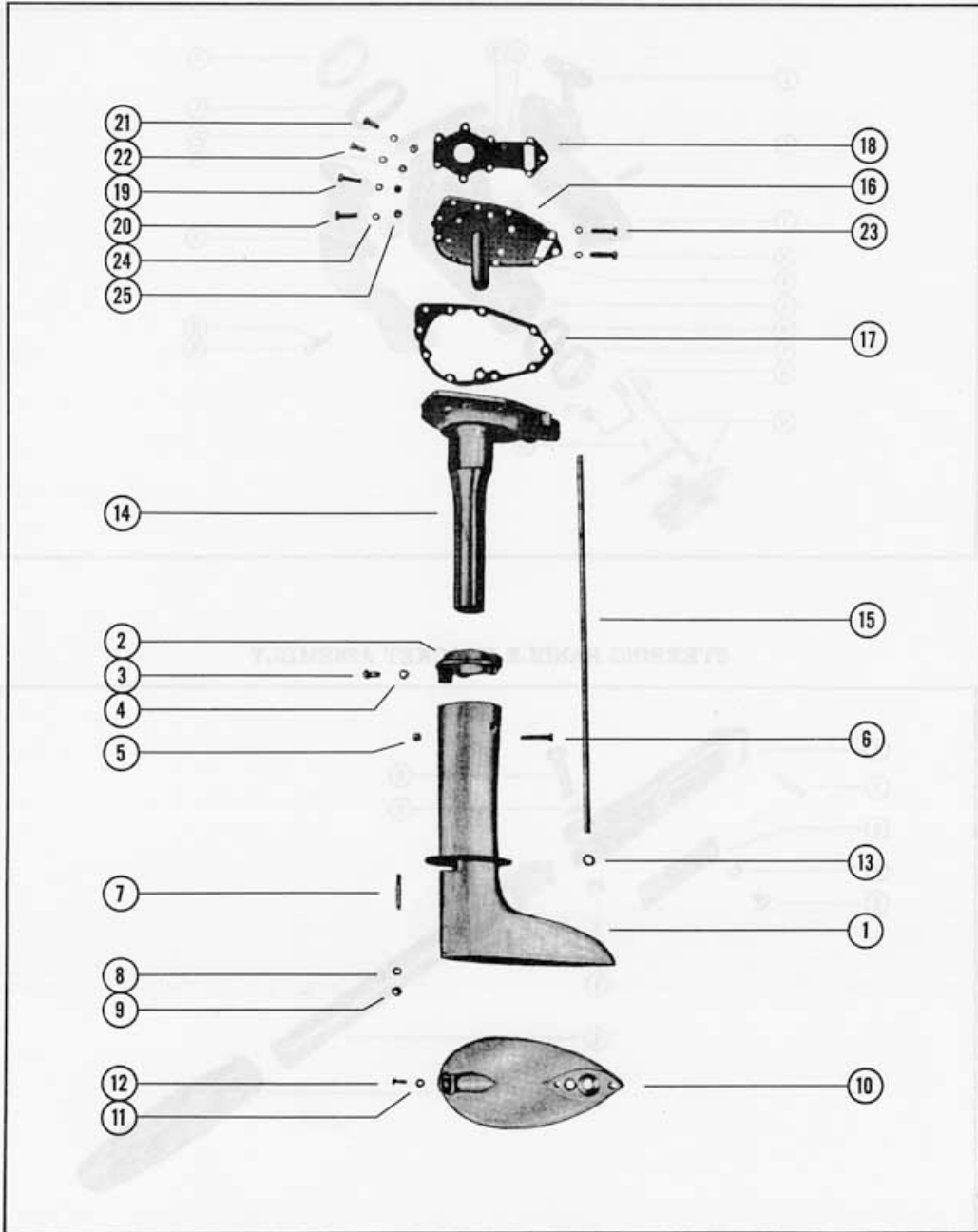
DRIVE SHAFT HOUSING ASSEMBLY

PART NO.	REF. NO.	DESCRIPTION	KF3	KF 3-1	KF 3-2	KF 3-3	KF5	KF 5-1	KF 5-2
1516-784	1	Drive Shaft Housing	1	1	-	-	-	-	-
1514-782	1	Drive Shaft Housing	-	-	1	1	1	1	1
22752	2	Top, drive shaft housing	1	1	1	1	1	1	1
10-24778	3	Screw, drive shaft housing top	1	-	-	-	-	-	-
10-22729	3	Screw, drive shaft housing top	-	1	1	1	1	1	1
13-20202	4	Lockwasher, drive shaft housing top screw	-	1	1	1	1	1	1
11-22053	5	Nut, drive shaft housing clamping screw	-	1	1	1	1	1	1
10-22730	6	Screw, drive shaft housing clamping	-	1	1	1	1	1	1
16-24332	7	Stud, drive shaft housing to gear housing	1	1	1	1	1	1	1
13-26992	8	Lockwasher, drive shaft housing to gear housing stud	1	1	1	1	1	1	1
11-22433	9	Nut, drive shaft housing to gear housing stud	1	1	1	1	1	1	1
24338	10	Plate, anti-cavitation (N. L. A.)	1	1	-	-	-	-	-
24330	10	Plate, anti-cavitation	-	-	1	1	1	1	1
13-26996	11	Lockwasher, anti-cavitation plate screw	1	1	-	-	-	-	-
13-22773	11	Lockwasher, anti-cavitation plate screw	-	-	1	1	1	1	1
10-22028	12	Screw, anti-cavitation plate	1	1	-	-	-	-	-
10-24222	12	Screw, anti-cavitation plate	-	-	1	1	1	1	1
25-21720	--	"O" Ring, upper drive shaft	-	-	-	-	1	1	1
25-22174	13	"O" Ring, water tube inlet	1	1	-	1	-	-	-
32-24334	15	Tube, water inlet	-	-	-	-	1	1	1
10-24782	--	Screw, drive shaft housing	1	-	-	-	-	-	-
12-20583	--	Washer, drive shaft housing screw	1	-	-	-	-	-	-
24297A1	14	Drive Shaft Housing Adaptor Assembly	1	-	-	-	-	-	-
32-23637	15	Tube, water inlet	1	-	-	-	-	-	-
17-22642	--	Pin, groove - pivot tube	3	-	-	-	-	-	-
24297A2	14	Drive Shaft Housing Adaptor Assembly	-	1	-	-	-	-	-
24293A1	16	Plate Assembly, adaptor housing to crankcase	-	1	-	-	-	-	-
24293*	--	Plate, adaptor housing to crankcase	1	1	-	-	-	-	-
22-21684	--	Elbow, water outlet tube	-	1	-	-	-	-	-
32-24337A1	--	Water Inlet Tube Assembly	-	1	-	-	-	-	-
11-21113	--	Nut, compression	-	1	-	-	-	-	-
22-21685	--	Sleeve, compression	-	1	-	-	-	-	-
22-21686	--	Connector, water inlet tube	-	1	-	-	-	-	-
32-24303	15	Tube, water outlet	-	1	-	-	-	-	-
17-22642	--	Pin, groove,- pivot tube	-	3	-	-	-	-	-
24342A1	14	Drive Shaft Housing Adaptor Assembly	-	-	1	1	-	-	-
32-24341A1	15	Water Inlet Tube Assembly	-	-	1	1	-	-	-
17-22642	--	Pin, groove - pivot tube	-	-	3	3	-	-	-
24339	--	Plate, adaptor housing to crankcase	-	-	1	1	-	-	-
22-21684	--	Elbow, water outlet tube	-	-	1	1	-	-	-
27-24294	17	Gasket, adaptor housing to plate	1	-	-	-	-	-	-
27-24336	17	Gasket, adaptor housing to plate	-	1	-	-	-	-	-
27-24340	17	Gasket, adaptor housing to plate	-	-	1	1	-	-	-
27-24295	18	Gasket, plate to powerhead	1	1	1	1	-	-	-
10-22378	19	Screw, mounting bracket to adaptor housing	3	3	3	3	-	-	-
10-22378	20	Screw, adaptor housing to plate (1 1/8")	-	-	1	1	-	-	-
10-20098	21	Screw, adaptor housing to plate (3/4")	3	3	2	2	-	-	-
10-24963	22	Screw, adaptor housing to plate (7/8")	1	1	1	1	-	-	-
10-21504	23	Screw, adaptor housing to cylinder (1 1/4")	2	2	2	2	-	-	-
13-26992	24	Lockwasher, adaptor housing and bracket screw	9	9	9	9	-	-	-
11-20690	25	Nut, adaptor housing to plate screw	6	6	6	6	-	-	-

\* If old style crankcase bottom is used on KF3 engine, use 24293 adaptor plate as a replacement for the 24293A1 adaptor plate assembly.



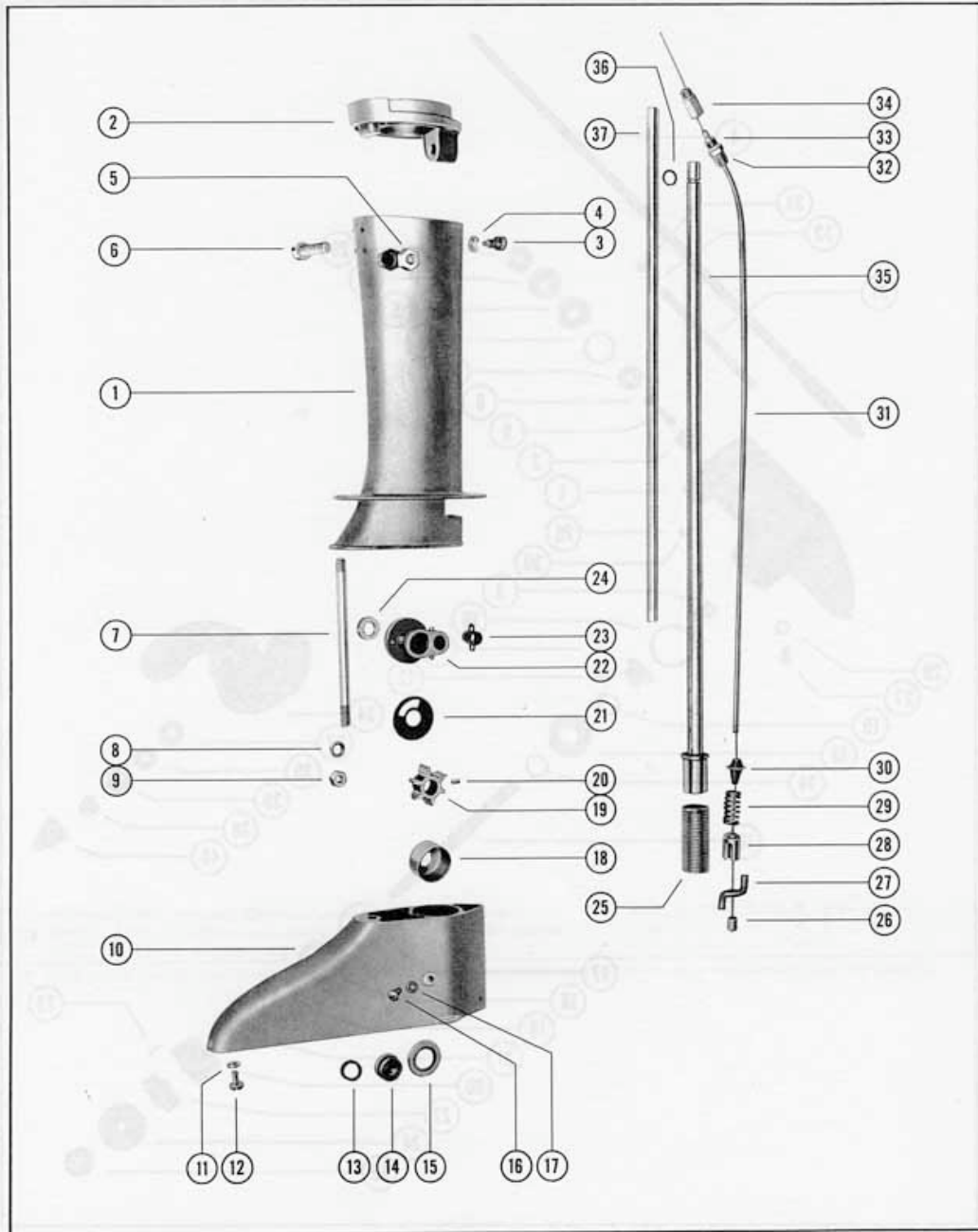
DRIVE SHAFT HOUSING ASSEMBLY



DRIVE SHAFT HOUSING ASSEMBLY

PART NO.	REF. NO.	DESCRIPTION	MK5
1508-394	1	Drive Shaft Housing Assembly - upper	1
22752	2	Top, drive shaft housing	1
10-22729	3	Screw, drive shaft housing top	1
13-20202	4	Lockwasher, drive shaft housing top screw	1
11-22053	5	Nut, clamping screw	1
10-22730	6	Screw, clamping	1
16-22731	7	Stud, drive shaft housing to gear housing	1
13-26992	8	Lockwasher, drive shaft housing to gear housing stud	1
11-21825	9	Nut, drive shaft housing to gear housing stud	1
1509-395A2	10	Drive Shaft Housing Assembly - lower	1
26-22736	--	Oil Seal	1
13-22773	11	Lockwasher, gear housing to lower drive shaft housing	1
10-24222	12	Screw, gear housing to lower drive shaft housing	1
25-20034	13	"O" Ring, trip finger chamber plug	1
22747	14	Plug, trip finger chamber	1
12-22739	15	Washer, thrust	1
10-28653	16	Screw, vent	1
12-20262	17	Washer, vent screw sealing	1
46-22741	18	Housing, water pump	1
47-22748	19	Impeller, water pump	1
17-22060	20	Pin, impeller drive	1
22743	21	Cover, water pump	1
22733A1	22	Pilot Cap Assembly	1
23-22583	23	Bushing, pilot cap	1
26-22734	24	Oil Seal, pilot cap	1
10-20314	--	Screw, pilot cap	1
24-22763	25	Spring, clutch	1
22750	26	Cable, control	1
22745	27	Finger, trip	1
22744	28	Housing, trip finger	1
24-22754	29	Spring, trip finger	1
22749	30	Cone, Seal	1
32-22584A1	31	Tubing, control cable guide (lower end)	1
22-22644	32	Connector, lower guide tube to crankcase	1
22322	33	Sleeve, compression	1
22-22586	34	Connector, upper guide tube	1
45-22737A1	35	Drive Shaft Assembly, upper	1
25-21720	36	"O" Ring, upper drive shaft	1
32-22732	37	Tube, water inlet	1

# DRIVE SHAFT HOUSING ASSEMBLY



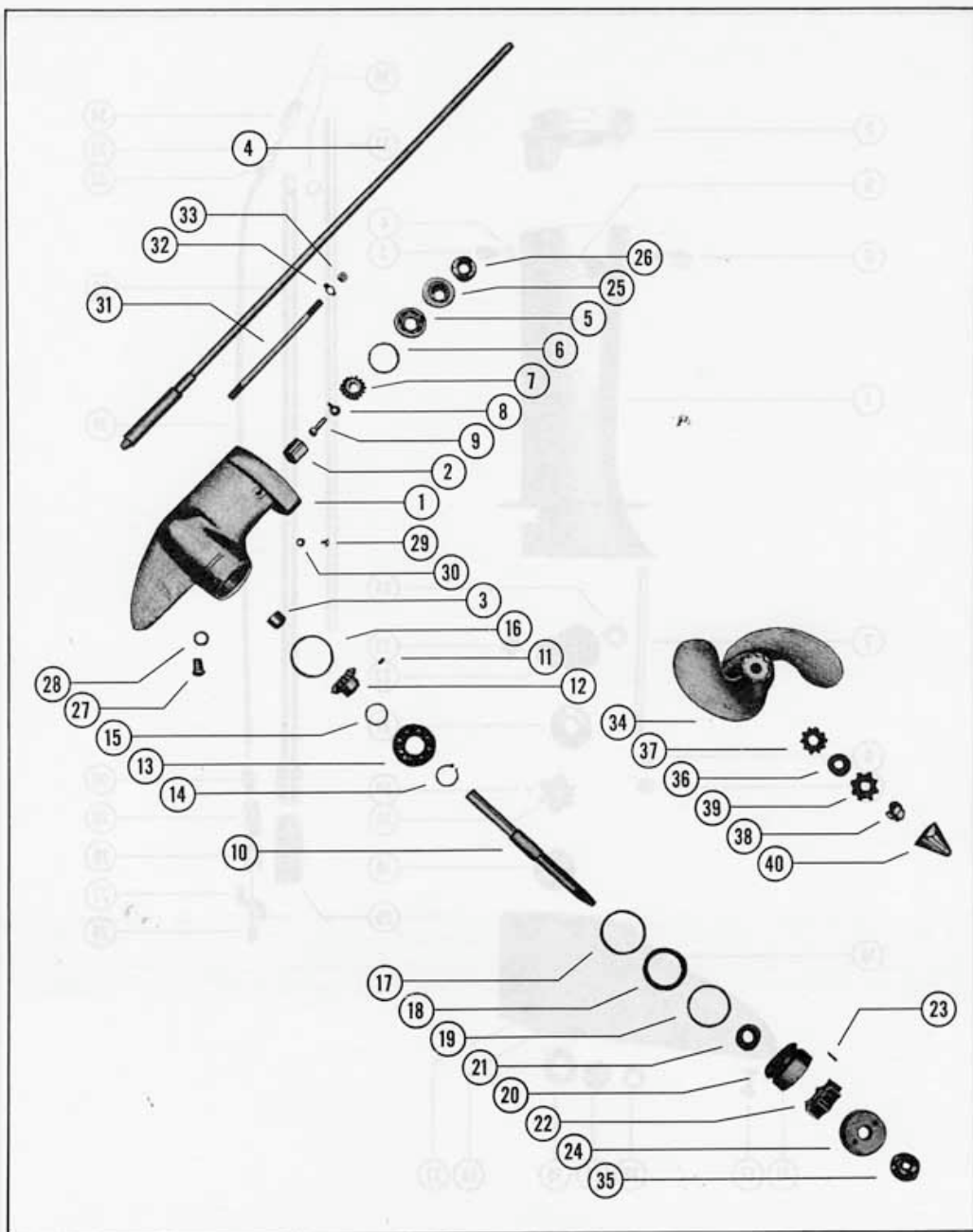
GEAR HOUSING ASSEMBLY, COMPLETE

PART NO.	REF. NO.	DESCRIPTION	KF3	KF 3-1	KF 3-2	KF 3-3	KF5	KF 5-1	KF 5-2		
A-1609-802A1	-	Gear Housing Assembly, Complete	1	1	-	-	-	-	-		
A-1609-803A2	-	Gear Housing Assembly, Complete	-	-	1	1	1	1	1		
A-1609-803A1	1	Gear Housing Assembly	1	1	1	1	1	1	1		
A-31-22756	2	Bearing, roller - drive shaft	1	1	1	1	1	1	1		
A-31-22755	3	Bearing, roller - propeller shaft	1	1	1	1	1	1	1		
A-45-24451	4	Drive Shaft	1	1	1	1	1	1	1		
A-45-24470**	4	Drive Shaft	-	-	-	-	-	-	1		
A-30-25124	5	Bearing, ball - drive shaft	1	1	1	1	1	1	1		
A-15-22759A1	6	Shim, ball bearing (.002-3-5)	1	1	1	1	-	-	-		
A-43-24452	7	Gear, pinion	1	1	1	1	1	1	1		
C-13-22764	8	Lockwasher, pinion gear screw	1	1	1	1	1	1	1		
C-10-21874	9	Screw, pinion gear retaining	1	1	1	1	1	1	1		
A-44-24463	10	Shaft, propeller	-	-	1	1	1	1	1		
A-44-24454	10	Shaft, propeller	1	1	-	-	-	-	-		
C-17-22410	11	Pin, propeller gear to shaft	1	1	1	1	1	1	1		
A-43-24680	12	Gear, propeller	1	1	1	1	1	1	1		
A-30-21776	13	Bearing, ball - propeller shaft	1	1	1	1	1	1	1		
C-53-22368	14	Ring, snap	1	1	1	1	1	1	1		
A-15-22765A1	15	Shim, gear to bearing (.003-5-7)	-----as required-----								
A-15-22369A1	16	Shim, spacer to bearing (.002-3-5-10)	-----as required-----								
A-23-24460	17	Spacer, bearing to gear housing	2	2	2	2	1	1	1		
A-12-24453	18	Washer, water intake housing sealing	1	1	-	-	-	-	-		
C-12-22768	18	Washer, water intake housing sealing	-	-	1	1	1	1	1		
A-12-22770	19	Washer, rubber - sealing	1	1	1	1	1	1	1		
A-46-22945A1	20	Water Pump Assembly	1	1	1	1	1	1	1		
A-26-22058	21	Oil Seal, water pump	1	1	1	1	1	1	1		
A-47-22062	22	Impeller, water pump	1	1	1	1	1	1	1		
C-17-22060	23	Pin, impeller drive	1	1	1	1	1	1	1		
A-22771	24	Cover water pump	1	1	1	1	1	1	1		
A-26-21670A1	25	Pilot and Oil Seal Assembly	1	1	1	1	1	1	1		
A-26-21670	26	Oil Seal	1	1	1	1	1	1	1		
C-10-22428	27	Screw, grease filler hole	1	1	1	1	1	1	1		
C-12-20260	28	Washer, grease filler hole screw	1	1	1	1	1	1	1		
C-10-28653	29	Screw, vent	1	1	1	1	1	1	1		
C-12-20262	30	Washer, vent screw sealing	1	1	1	1	1	1	1		
A-16-24333	31	Stud, gear housing to drive shaft housing	1	1	1	1	1	1	1		
C-14-20747	32	Tab Washer, gear housing stud	1	1	1	1	1	1	1		
C-11-20083	33	Nut, gear housing stud	1	1	1	1	1	1	1		
A-48-24459	34	Propeller	-	1	1	1	1	1	1		
A-48-24456	34	Propeller	1	1*	-	-	-	-	-		
A-52-24455A1	--	Clutch Assembly	-	1	1	1	1	1	1		
A-52-24455	35	Plate, thrust	-	1	1	1	1	1	1		
A-24464	36	Disc, friction (propeller shaft)	-	9	8	8	8	8	8		
A-24465	37	Disc, friction (propeller hub)	-	8	8	8	8	8	8		
A-24-24458	38	Spring, compression	-	1	1	1	1	1	1		
A-15-24755	--	Shim, clutch (.010)	-----as required-----								
A-14-24461	39	Tab Washer, propeller nut	-	1	1	1	1	1	1		
A-11-24462	40	Nut, propeller	-	1	1	1	1	1	1		
A-11-24457	40	Nut, propeller	1	1*	-	-	-	-	-		
C-18-20209	--	Cotter Pin	1	1*	-	-	-	-	-		
A-17-20957	--	Pin, shear	1	1*	-	-	-	-	-		

\* Parts so marked are used on KF3-1 engines below Serial #360080.

\*\* Use A-45-24470 Drive Shaft on all KF5-2 engines above Serial #528404.

GEAR HOUSING ASSEMBLY, COMPLETE



GEAR HOUSING ASSEMBLY, COMPLETE

PART NO.	REF. NO.	DESCRIPTION	MK5
A-1607-396A3	-	Gear Housing Assembly, Complete	1
A-1607-400A2	1	Gear Housing Assembly	1
A-31-22756	-	Bearing, roller - drive shaft	1
A-31-22755	-	Bearing, roller - propeller shaft	1
A-45-22758	2	Drive Shaft (lower)	1
A-30-25124	3	Bearing, ball - drive shaft	1
A-52-22760	4	Drum, clutch	1
A-15-22759A1	5	Shim, ball bearing (.002-3-5)	AR
A-23-22761	6	Spacer, bearing	1
C-25-22762	7	"O" Ring, gear housing seal	1
A-43-24468A1	8 & 12	Gear Assembly, pinion and propeller	1
C-13-22764	9	Lockwasher, pinion gear screw	1
C-10-21874	10	Screw, gear pin	1
A-44-24463	11	Shaft, propeller	1
C-17-22410	13	Pin, propeller gear to shaft	1
A-30-21776	14	Bearing, ball - propeller shaft	1
C-53-22368	15	Ring, snap	1
A-15-22765A1	16	Shim, gear to bearing (.003-5-7)	AR
A-15-22369A1	--	Shim, spacer to bearing (.002-3-5-10)	AR
A-23-24460	17	Spacer, bearing to gear housing	1
C-12-22768	18	Washer, water intake housing sealing	1
C-25-20812	19	Seal, rubber - sealing	1
A-22769A1	20	Water Intake Housing Assembly	1
A-26-22058	--	Oil Seal, water intake housing	1
A-22771	21	Cover, water housing assembly	1
C-10-22066	22	Screw, grease filler hole	1
C-12-20260	23	Washer, grease filler hole screw	1
A-16-22772	24	Stud, gear housing to drive shaft housing	1
C-14-20747	25	Tab Washer, gear housing stud	1
C-11-20083	26	Nut, gear housing stud	1
A-48-24459	27	Propeller	1
A-52-24455A1	--	Clutch Assembly	1
A-52-24455	28	Plate, thrust	1
A-24464	29	Disc, friction (propeller shaft)	8
A-24465	30	Disc, friction (propeller hub)	8
A-24-24458	31	Spring, compression	1
A-15-23544A1	--	Shim, clutch (.015-31)	AR
A-14-24461	32	Tab Washer, propeller nut	1
A-11-24462	33	Nut, propeller	1

ACCESSORIES

Gasket Set (KF3) . . . . .	A-27-24271
Gasket Set (KF5 & Mark 5) . . . . .	A-27-24266A1

GEAR HOUSING ASSEMBLY, COMPLETE

